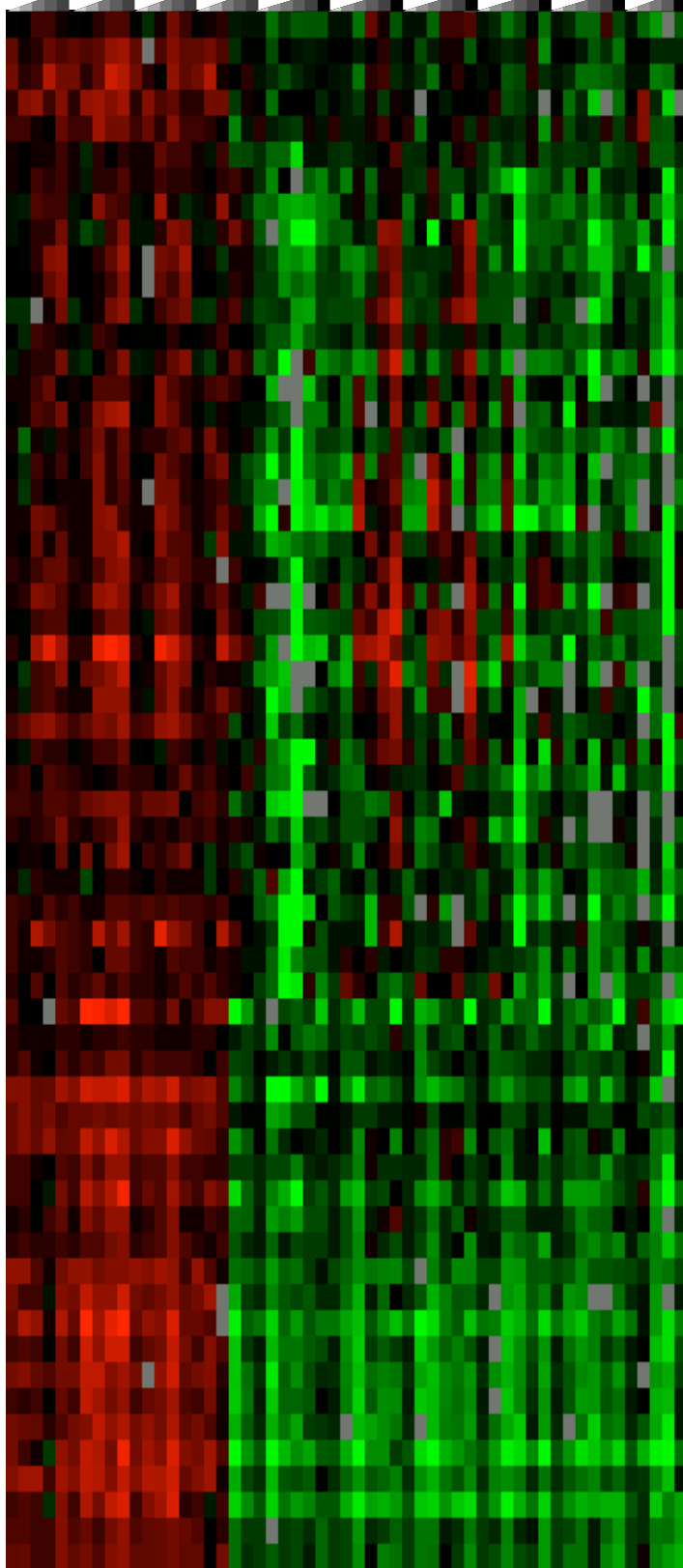
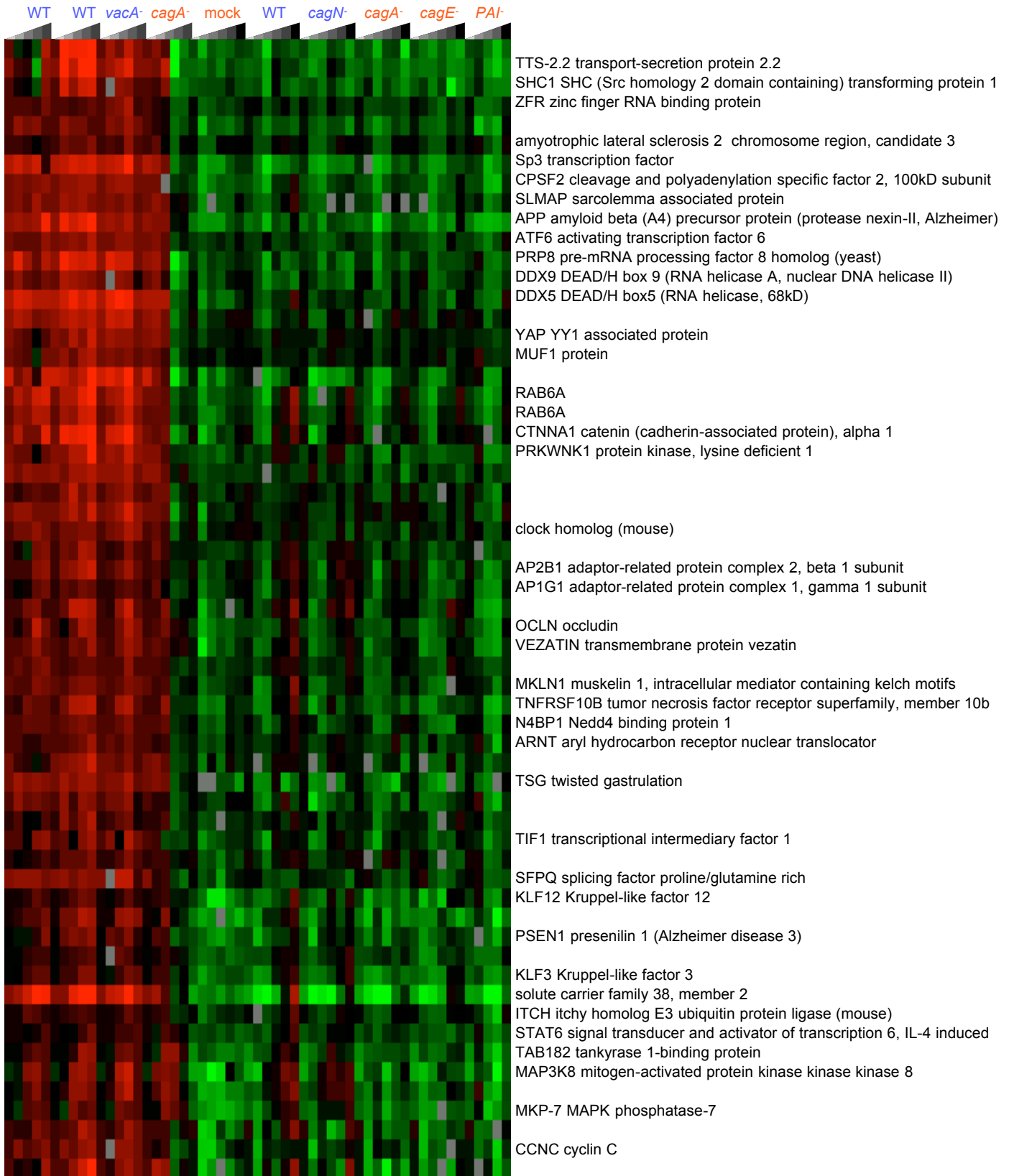


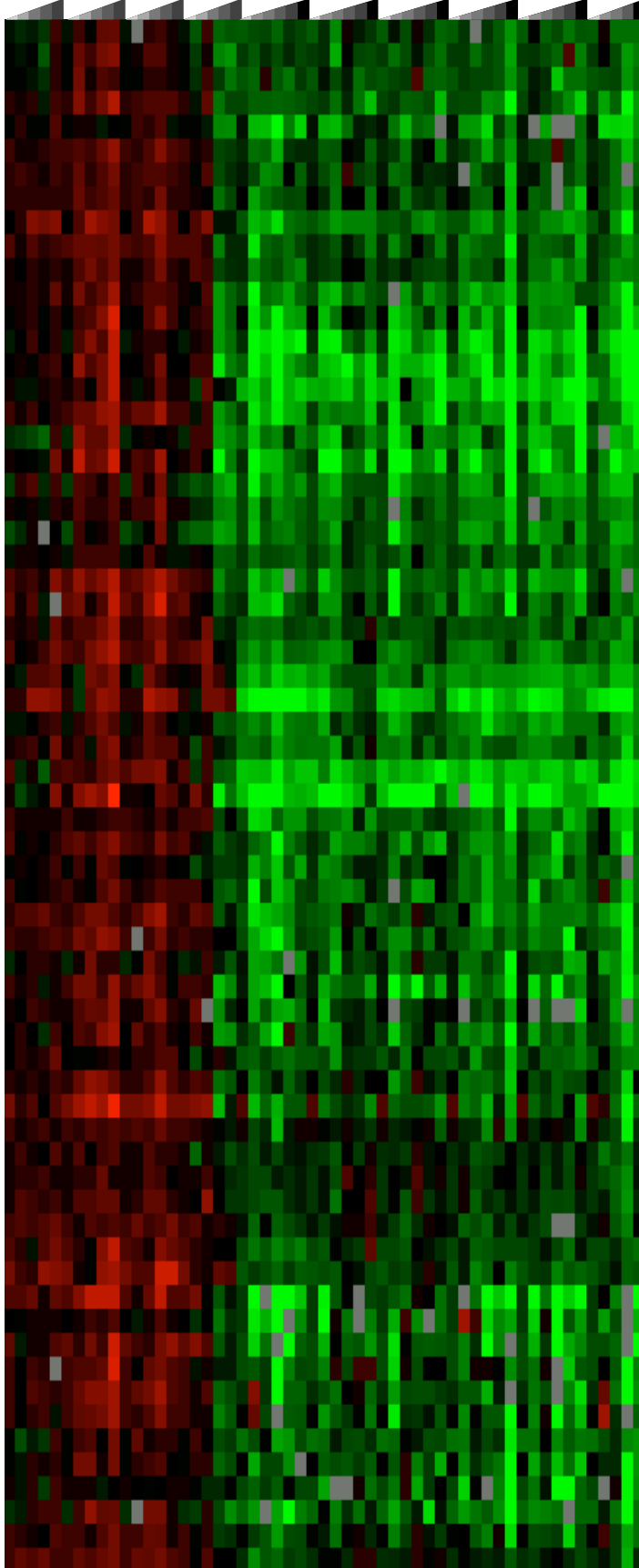
WT WT *vacA*⁻ *cagA*⁻ mock WT *cagN*⁻ *cagA*⁻ *cagE*⁻ *PAI*⁻



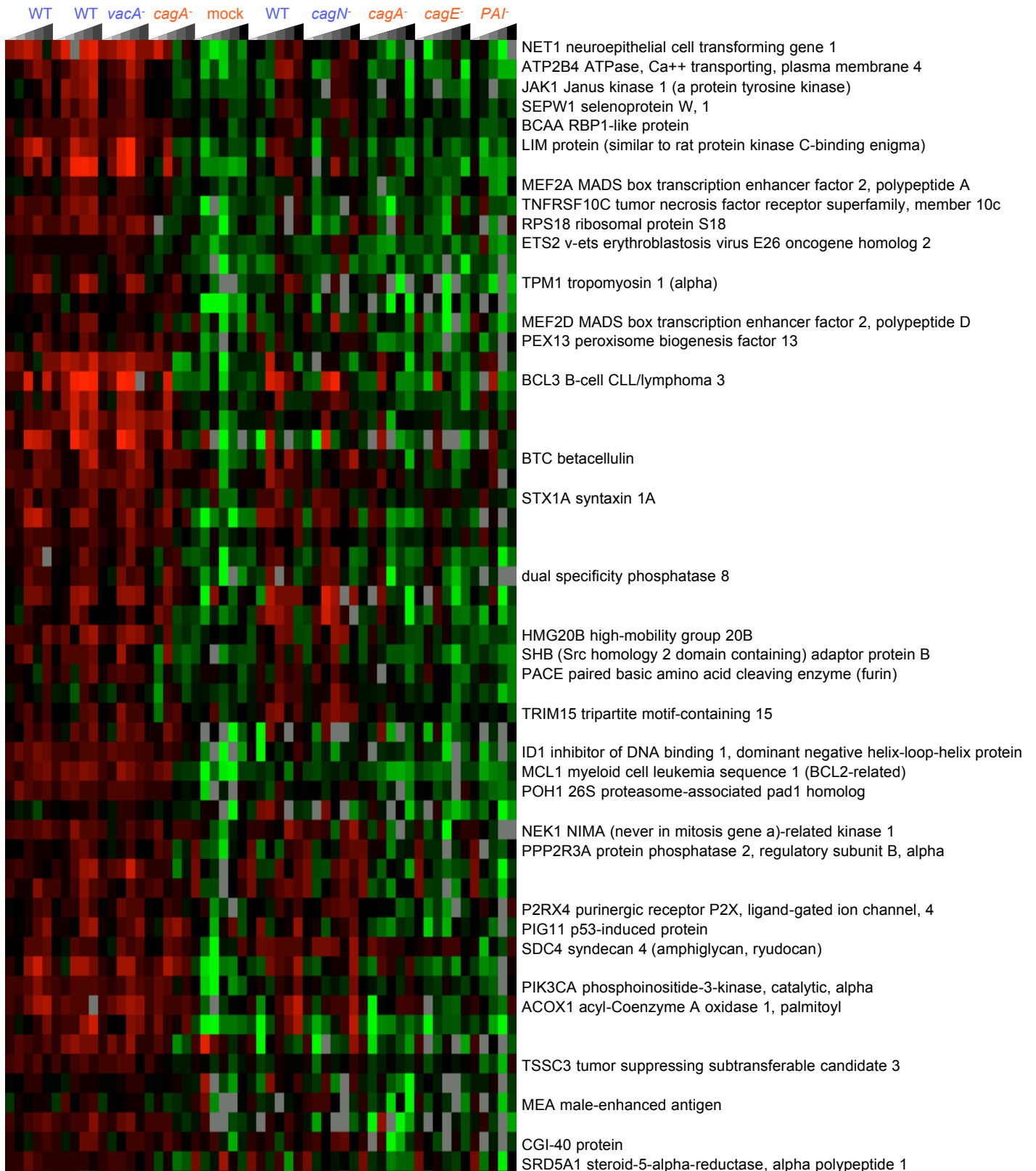
Rho guanine nucleotide exchange factor (GEF) 12
 JAM1 junctional adhesion molecule 1
 DOC1 downregulated in ovarian cancer 1
 NAPA N-ethylmaleimide-sensitive factor attachment protein, alpha
 yeast Sec31p homolog
 CTNNB1 catenin (cadherin-associated protein), beta 1
 DTR diphtheria toxin receptor (heparin-binding EGF-like growth factor)
 LCK lymphocyte-specific protein tyrosine kinase
 DEF6 differentially expressed in FDCP 6 homolog (mouse)
 GSK3B glycogen synthase kinase 3 beta
 LCK lymphocyte-specific protein tyrosine kinase
 CDH1 cadherin 1, type 1, E-cadherin (epithelial)
 KLF13 Kruppel-like factor 13
 KIF3C kinesin family member 3C
 FOXO1A forkhead box O1A
 cAMP response element-binding protein CRE-BPa
 CYLD cylindromatosis (turban tumor syndrome)
 PRO0149 protein
 DRCTNNB1A down-regulated by Ctnnb1, a
 THEA thioesterase, adipose associated
 HNF3G hepatocyte nuclear factor 3, gamma
 HNMT histamine N-methyltransferase
 AKAP13 A kinase (PRKA) anchor protein 13
 SHP-2 protein tyrosine phosphatase, PTPN11
 GLUD1 glutamate dehydrogenase 1
 BCRP2 Breakpoint cluster region protein, uterine leiomyoma, 2
 PDZ-GEF1 PDZ domain guanine nucleotide exchange factor(GEF)1
 STAT5B signal transducer and activator of transcription 5B
 PDCD8 programmed cell death 8 (apoptosis-inducing factor)
 VPS39 Vam6/Vps39-like
 FAT tumor suppressor homolog 1 (Drosophila)
 PACSIN2 protein kinase C and casein kinase substrate in neurons 2
 ARF3 ADP-ribosylation factor 3
 UCHL1 ubiquitin carboxyl-terminal esterase L1



WT WT *vacA*⁻ *cagA*⁻ mock WT *cagN*⁻ *cagA*⁻ *cagE*⁻ *PAI*⁻



RAB35
 RES4-22 gene
 ADRBK1 adrenergic, beta, receptor kinase 1
 KIF5B kinesin family member 5B
 STAT5B signal transducer and activator of transcription 5B
 SATB1 special AT-rich sequence binding protein 1
 solute carrier family 23 (nucleobase transporters), member 1
 TRAP240 thyroid hormone receptor-associated protein, 240 kDa subunit
 AF-6 (Drosophila, trithorax homolog)
 AF-6 (Drosophila, trithorax homolog)
 LZ16 nasopharyngeal carcinoma susceptibility protein
 HIPK3 homeodomain interacting protein kinase 3
 COPA coatamer protein complex, subunit alpha
 MAP3K7IP2 mitogen-activated protein kinase kinase kinase 7 interactor 2
 SLMAP sarcolemma associated protein
 MAP3K7IP2 mitogen-activated protein kinase kinase kinase 7 interactor 2
 PPP4R1 protein phosphatase 4, regulatory subunit 1
 PPP4R1 protein phosphatase 4, regulatory subunit 1
 PSAP prosaposin
 OGT O-linked N-acetylglucosamine (GlcNAc) transferase
 ARHGEF2 rho/rac guanine nucleotide exchange factor (GEF) 2
 CYLN2 cytoplasmic linker 2
 H1F0 H1 histone family, member 0
 SCD stearoyl-CoA desaturase (delta-9-desaturase)
 ATBF1 AT-binding transcription factor 1
 IRF2 interferon regulatory factor 2
 NEDD4L neural precursor cell expressed, developmentally down 4-like
 DLAT dihydrolipoamide S-acetyltransferase
 P66 transcription repressor component of the MeCP1 complex
 GNAS complex locus
 STX5A syntaxin 5A
 SEC14-like 1
 PDE8A phosphodiesterase 8A
 BHC80 BRAF35/HDAC2 complex (80 kDa)
 CNP 2',3'-cyclic nucleotide 3' phosphodiesterase
 TRAP240 thyroid hormone receptor-associated protein, 240 kDa subunit



1/4 0 4 fold induced

0 .5 1 3 6 12 24 hours