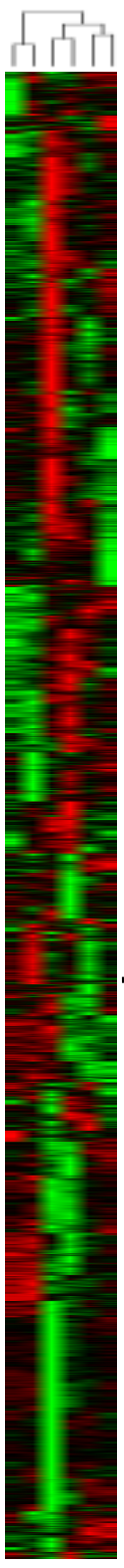
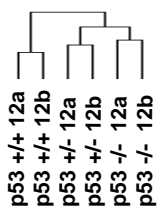


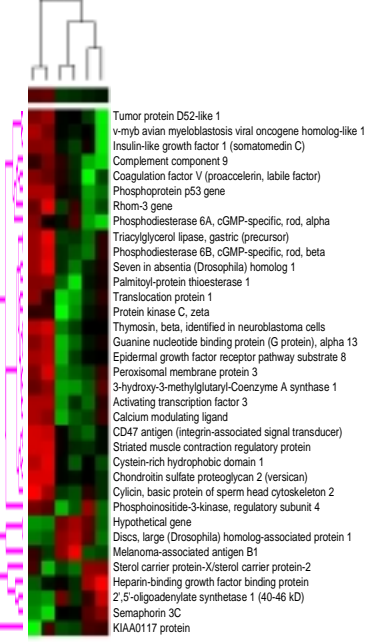
a



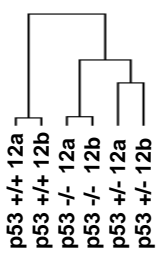
b



c



d



Gene Description

- Human breakpoint cluster region (BCR)
- Amylo-1, 6-glucosidase, 4-alpha-glucanotransferase
- Seven in absentia (*Drosophila*) homolog 1
- Centromere protein A
- Threonyl-tRNA synthetase
- Phosphodiesterase 6B, cGMP-specific, rod, beta
- Transcript ch132
- Triacylglycerol lipase, gastric (precursor)
- Human somatic cytochrome c (HCS)
- RE1-silencing transcription factor
- Proline rich 2
- Laminin, beta 1
- Peroxisomal membrane protein 3
- DnaJ (Hsp40) homolog, subfamily A, member 1
- Probe hTg737 (polycystic kidney diseases)
- Myeloid/lymphoid or mixed-lineage leukemia translocated to, 2 YDD19 protein
- Interferon, gamma-inducible protein 30
- Activating transcription factor 3
- Hemochromatosis
- Coagulation factor II (thrombin) receptor
- Ribosomal protein L23
- Thymosin, beta, identified in neuroblastoma cells
- Nuclear transport factor 2
- Epidermal growth factor receptor pathway substrate 8
- ATPase, H+ transporting, lysosomal 42kD, V1 subunit C, isoform 1
- Syntaxin 3A
- Endothelial differentiation, lysophosphatidic acid G-protein-coupled receptor, 2
- Tumor protein p53 binding protein, 1
- Pre-B-cell colony-enhancing factor
- NIMA (never in mitosis gene a)-related kinase 4
- Calcium modulating ligand
- Myeloid leukemia factor 2
- S-adenosylmethionine decarboxylase 1
- SRY (sex determining region Y)-box 9
- Nuclear factor I/B
- Transforming growth factor beta-stimulated protein TSC-22
- RABSA, member RAS oncogene family
- Myristoylated alanine-rich protein kinase C substrate
- Matrilin 2
- Cysteiny-tRNA synthetase
- KIAA0033 protein
- Cell growth regulatory with EF-hand domain
- Poliovirus receptor
- Tax1 (human T-cell leukemia virus type1) binding protein 1
- Regulator of G-protein signalling 2 (RGS2)
- Regulator of G-protein signalling 2 (RGS2)
- Lectin-homocysteine methyltransferase
- Lectin, galactoside-binding, soluble, 3 binding protein
- KIAA0094 protein
- Nuclear receptor subfamily 2, group F, member 2
- Kruppel-like factor 1 (erythroid)
- Epican
- Chondroitin sulfate proteoglycan 2 (versican)
- S100 calcium binding protein A4
- Nucleolar and coiled-body phosphoprotein 1
- HMT1 hnRNP methyltransferase-like 2
- Fibroblast growth factor receptor 2
- gp25L2 protein
- Immediate early response 3
- Endogenous retroviral protease
- Coproporphyrinogen oxidase
- Inhibitor of DNA binding 2
- Calcium/calmodulin-dependent protein kinase (CaM kinase) II gamma
- FK506 binding protein 1A
- Human beta-tubulin gene
- Epican
- Beta 2-microglobulin
- Keratin 18
- CD47 antigen (integrin-associated signal transducer)
- TGFB inducible early growth response
- Cylicin, basic protein of sperm head cytoskeleton 2
- Hypothetical protein HSU79252
- Carbonic anhydrase IX

TP53

A