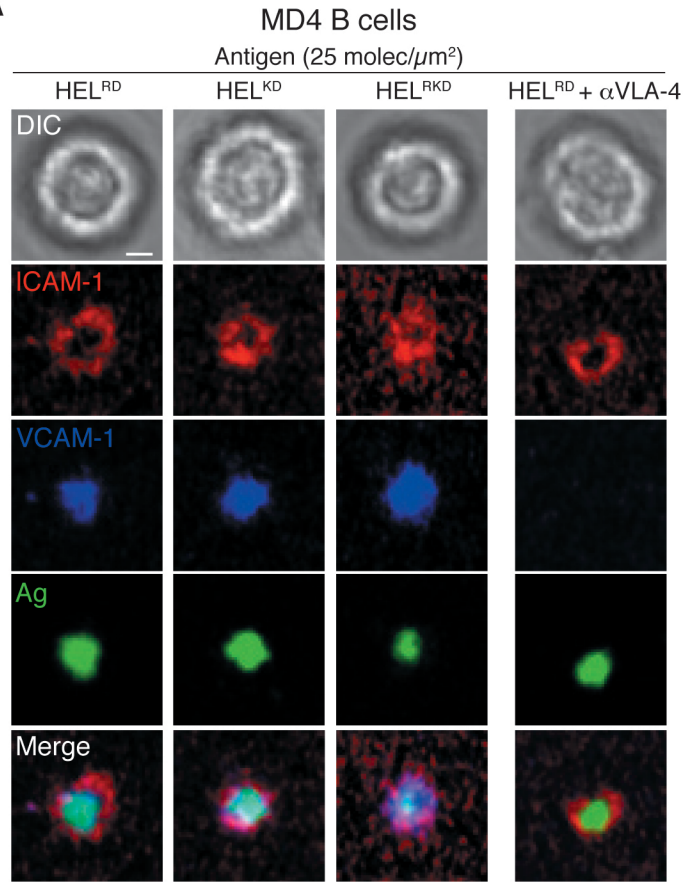
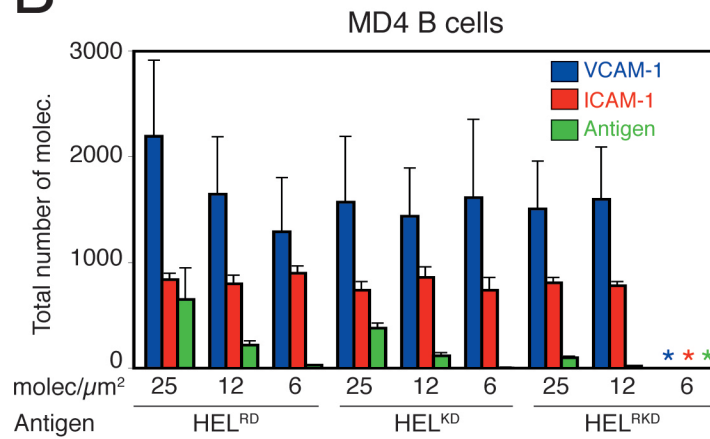


A**B****Supplemental Figure 2.**

(A) Naïve MD4 B cells were settled on membranes containing constant amounts of GPI-linked ICAM-1 (red) and GPI-linked VCAM-1 (blue) (50 and 25 mol ec/ μm^2 , respectively), and different lysozymes as antigens (green) at 25 molec/ μm^2 : HELRD ($K_A=2 \times 10^9 \text{ M}^{-1}$), HEL^{KD} ($K_A\sim 3 \times 10^7 \text{ M}^{-1}$), HEL^{RKD} ($K_A\sim 3 \times 10^6 \text{ M}^{-1}$). DIC, fluorescence and merged images from a representative B cell are shown. (B) Quantification of the total number of molecules of VCAM-1, ICAM-1, and antigen recruited in the B cell synapse. Data represent the mean of 50 cells in each case. Scale bar, 1 μm .