

Supplementary Data

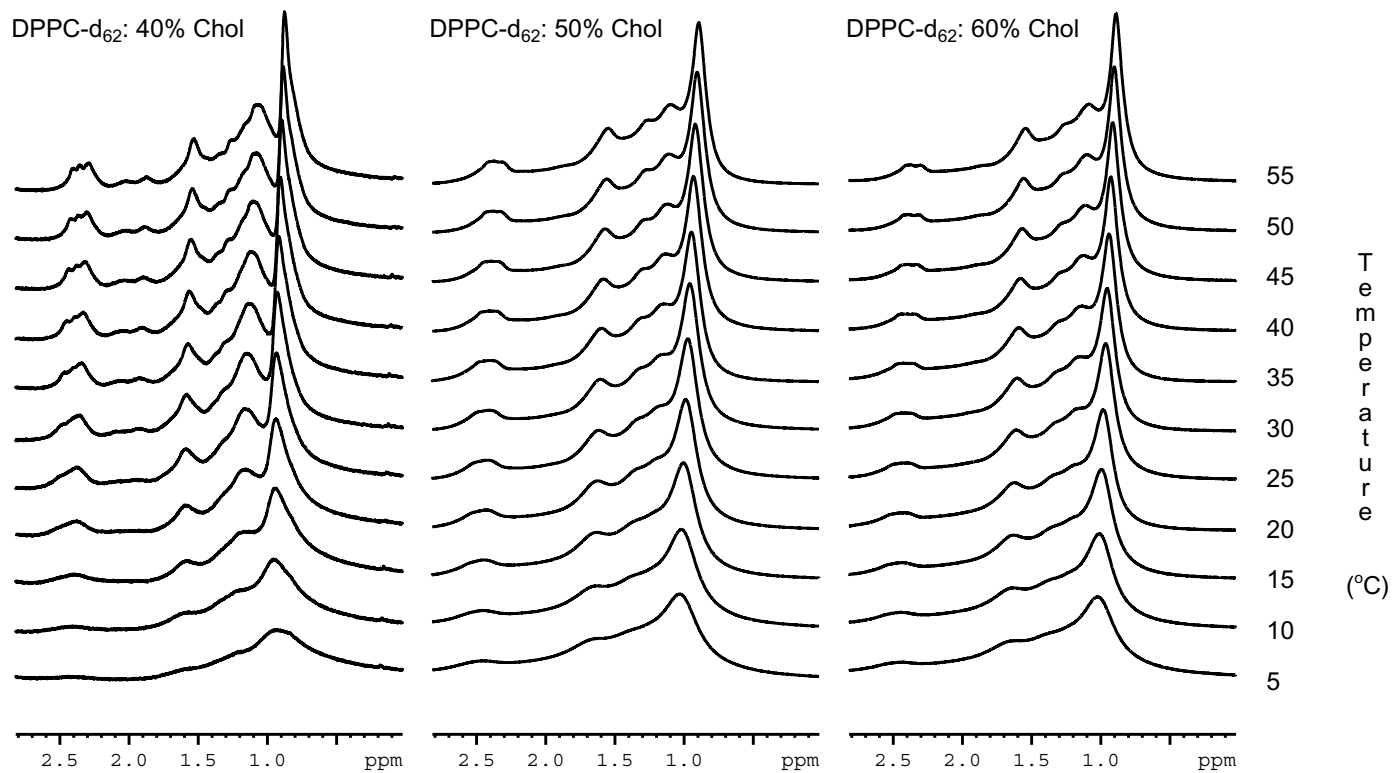
Fig. Sup. 1: ^1H MAS spectra of DPPC- d_{62} : 40% Chol, DPPC- d_{62} : 50% Chol and DPPC- d_{62} : 60% Chol between 5-60°C.

Fig. Sup. 2: ^{13}C MAS spectra of DPPC: 50% Chol at 40°C showing peak assignment.

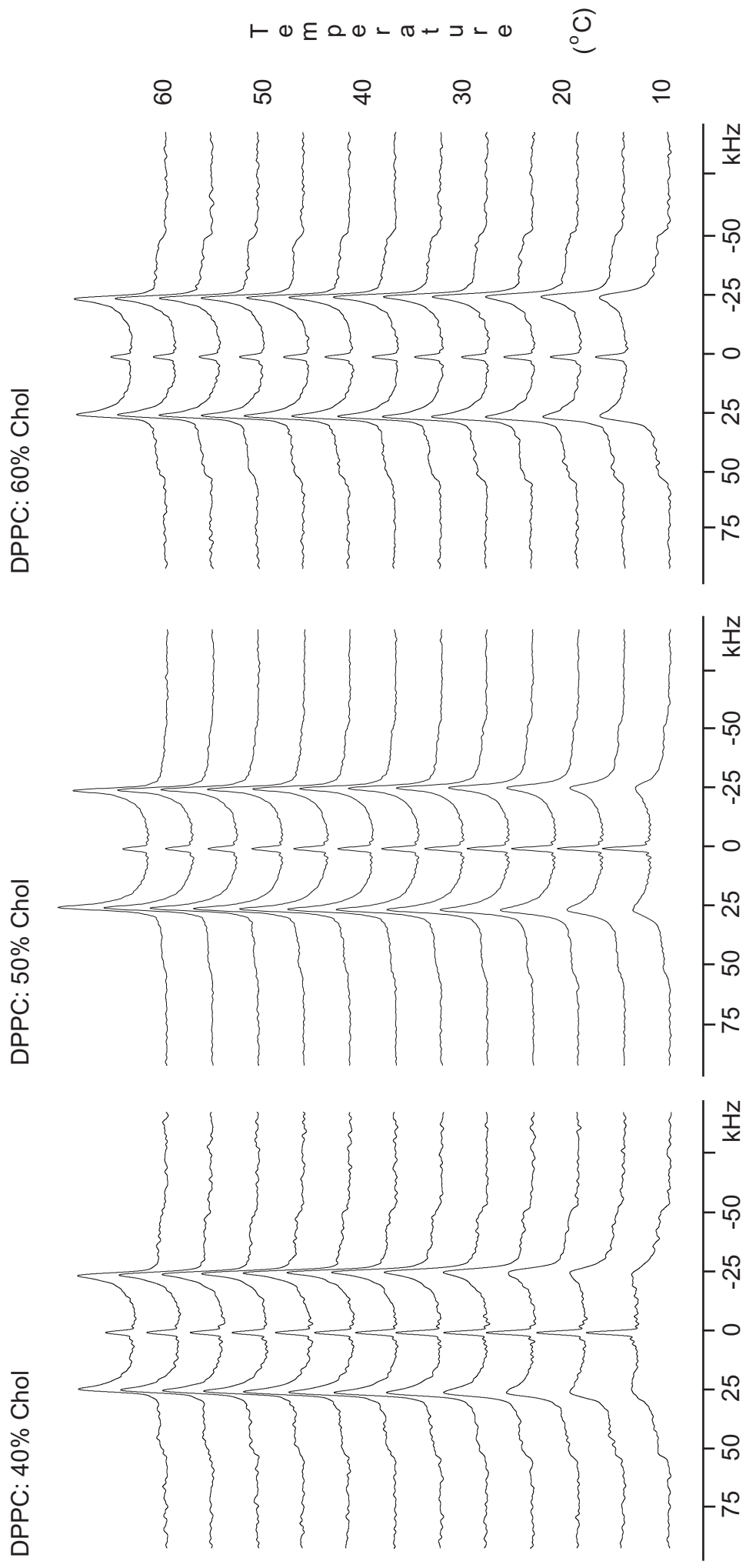
Fig. Sup. 3: ^2H spectra of DPPC: 40% Chol- d_1 , DPPC: 50% Chol- d_1 and DPPC: 60% Chol- d_1 between 5-60°C.

Fig. Sup. 4: Plot of chain methyl quadrupolar splitting versus temperature for DPPC- d_{62} : 40% Chol, DPPC- d_{62} : 50% Chol and DPPC- d_{62} : 60% Chol between 5-60°C.

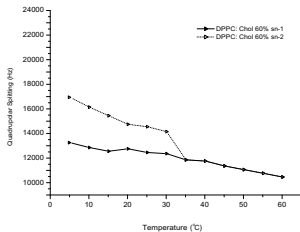
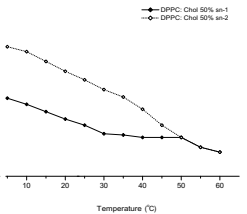
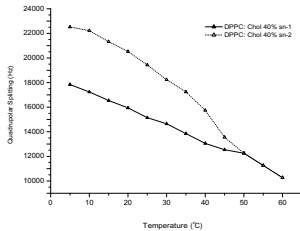
Fig. Sup. 5: WAXS of DPPC: 40% Chol between 5-65°C.



Supp. Fig. 1



Supp. Fig. 3



Supp. Fig. 4

