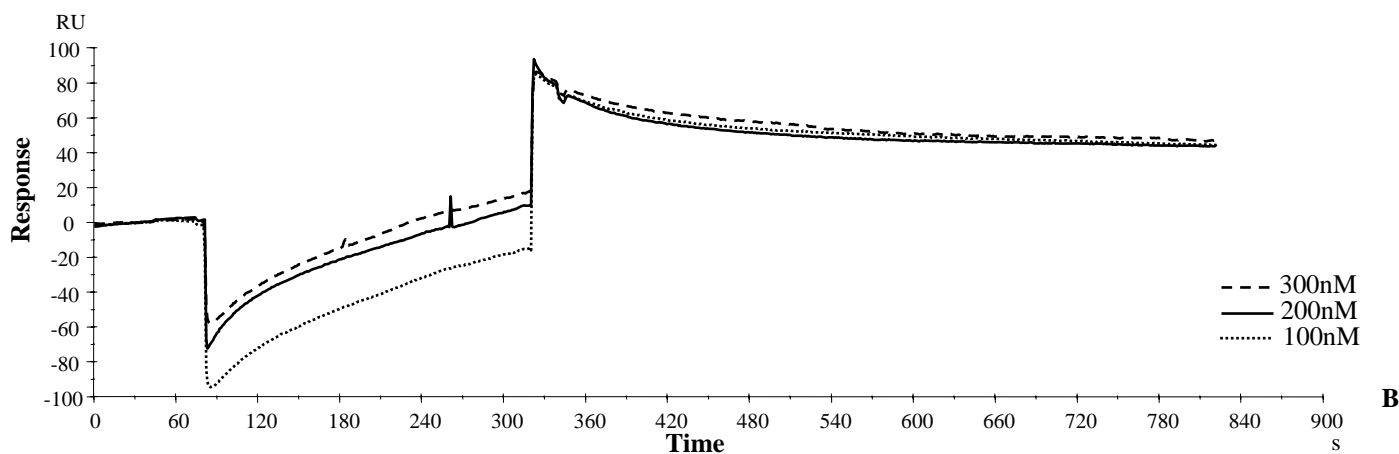


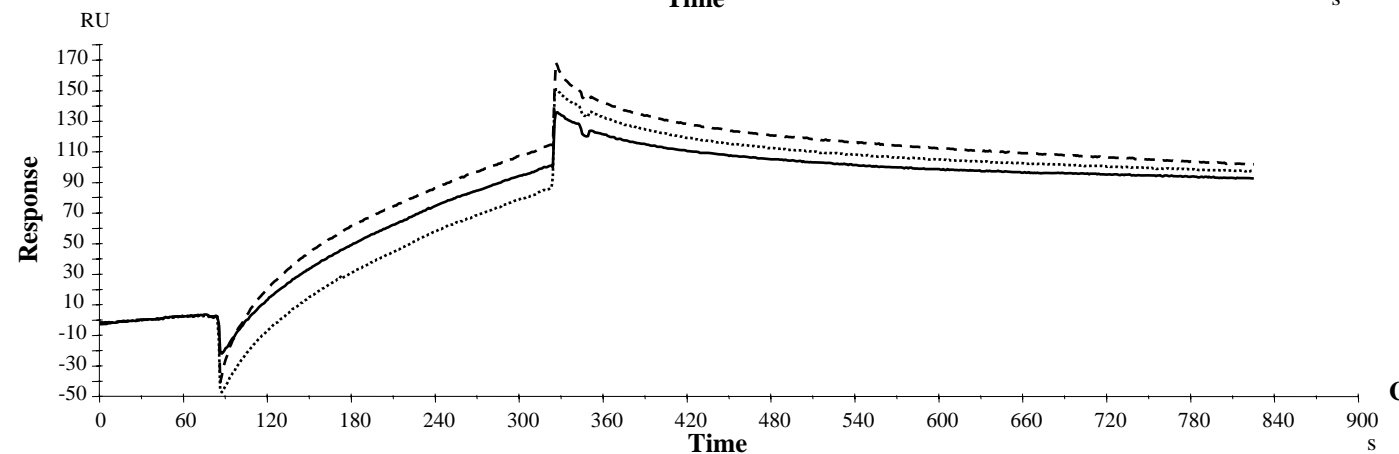
| | ka (1/Ms) | kd (1/s) | Rmax (RU) | RI (RU) | Conc of analyte | KA (1/M) | KD (M) | Req (RU) | kobs (1/s) | Chi2 |
|-----------------|-----------|----------|-----------|---------|-----------------|----------|----------|----------|------------|--------|
| YWWLTPPP | 8.80E+04 | 1.30E-03 | 138 | 349 | 300n | 6.76E+07 | 1.47E-08 | 13.1 | 0.0277 | 0.0488 |
| p 3 | 1.40E+04 | 4.12E-04 | 109 | 426 | 300n | 3.39E+07 | 2.94E-08 | 98.5 | 4.61E-03 | |
| p 2 | 5.00E+03 | 7.00E-04 | 174 | 304 | 300n | 7.14E+06 | 1.40E-07 | 125 | 2.20E-03 | |

Table

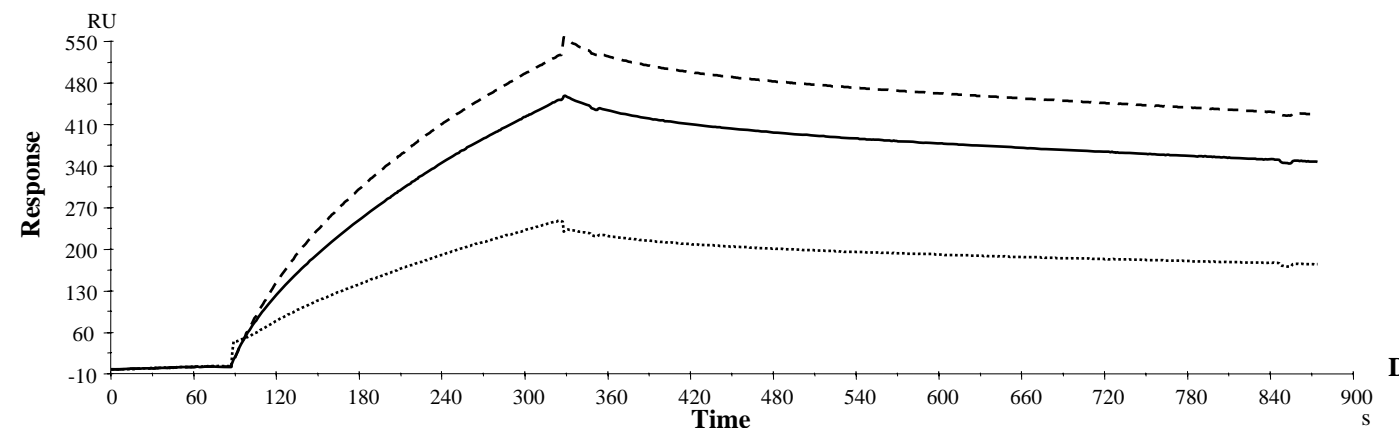
A



B



C



D

Supplementary Figure 1.

A. Table related to Biacore data shown in paper Figure 8. Fitting and statistics parameters were obtained by analysis of sensorgrams with BIAevaluation 3.0 software (BIAcore). Figure 8 illustrates overlay of bulk-subtracted sensorgrams obtained with 300nM PA63 on the three peptides.

PA63 in HEPES Buffer Saline (10mM HEPES, 150mM Na Cl, 3.4mM EDTA, 0.05% polysorbate 20, pH 7.4) (HBS), was injected at a flow rate of 10 μ l/min at three different concentrations (100nM \cdots , 200nM — , 300nM -- --) over immobilized monomeric peptides, YWWLTPPP (**B**), p2 (**C**), p3 (**D**).