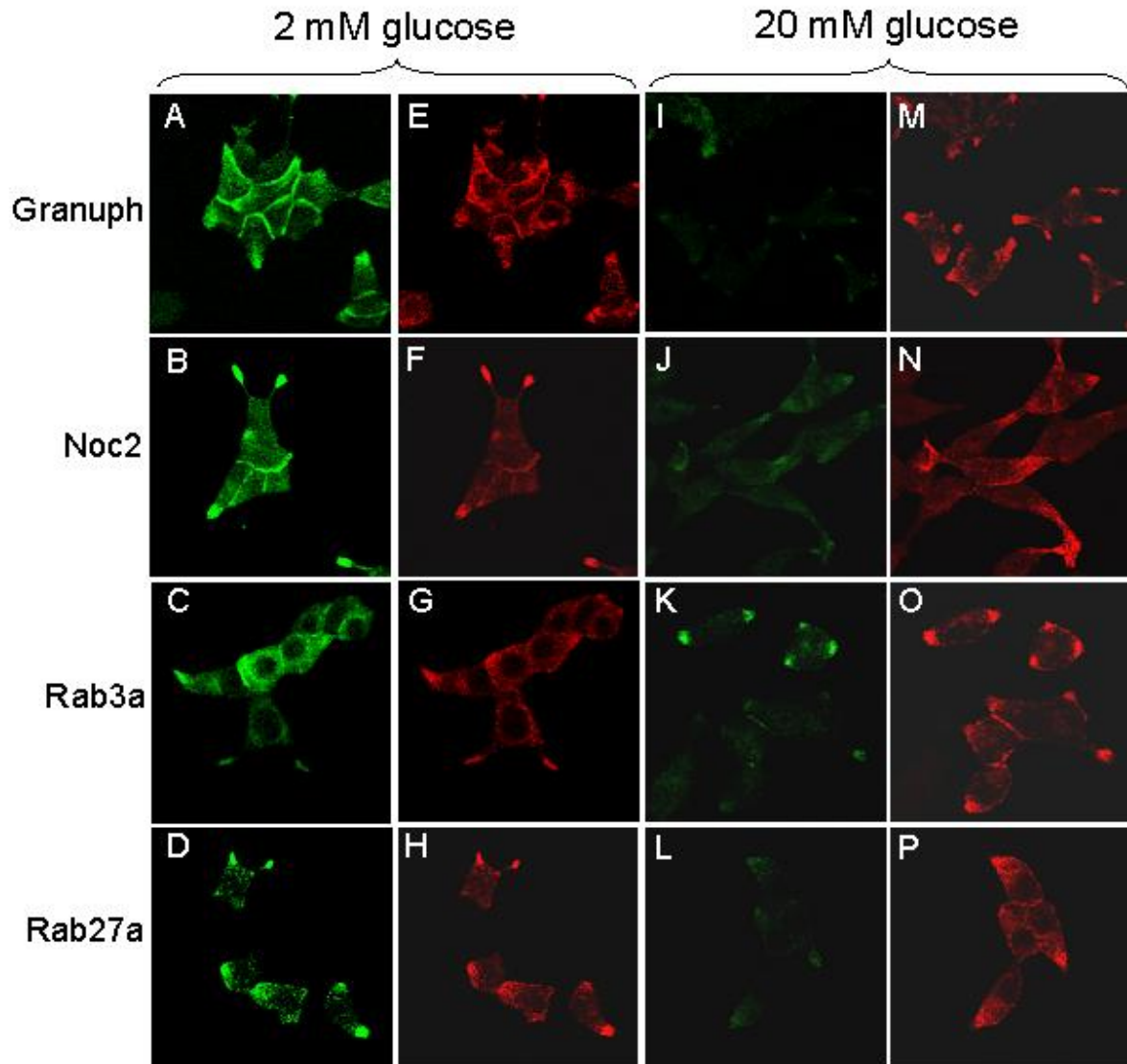


Supplementary Fig. 1



Supplementary Fig.1 Effect of high glucose on the expression of Granuphilin, Noc2, Rab3a and Rab27a proteins. INS-1E cells cultured for two days in the presence of 2 or 20 mM glucose were fixed and analyzed by immunofluorescence with antibodies directed against Granuphilin (A,I), Noc2 (B,J), Rab3a (C, K) or Rab27a (D,L). The position of the cells was visualized by double staining with an antibody directed against insulin (E-H and M-P).