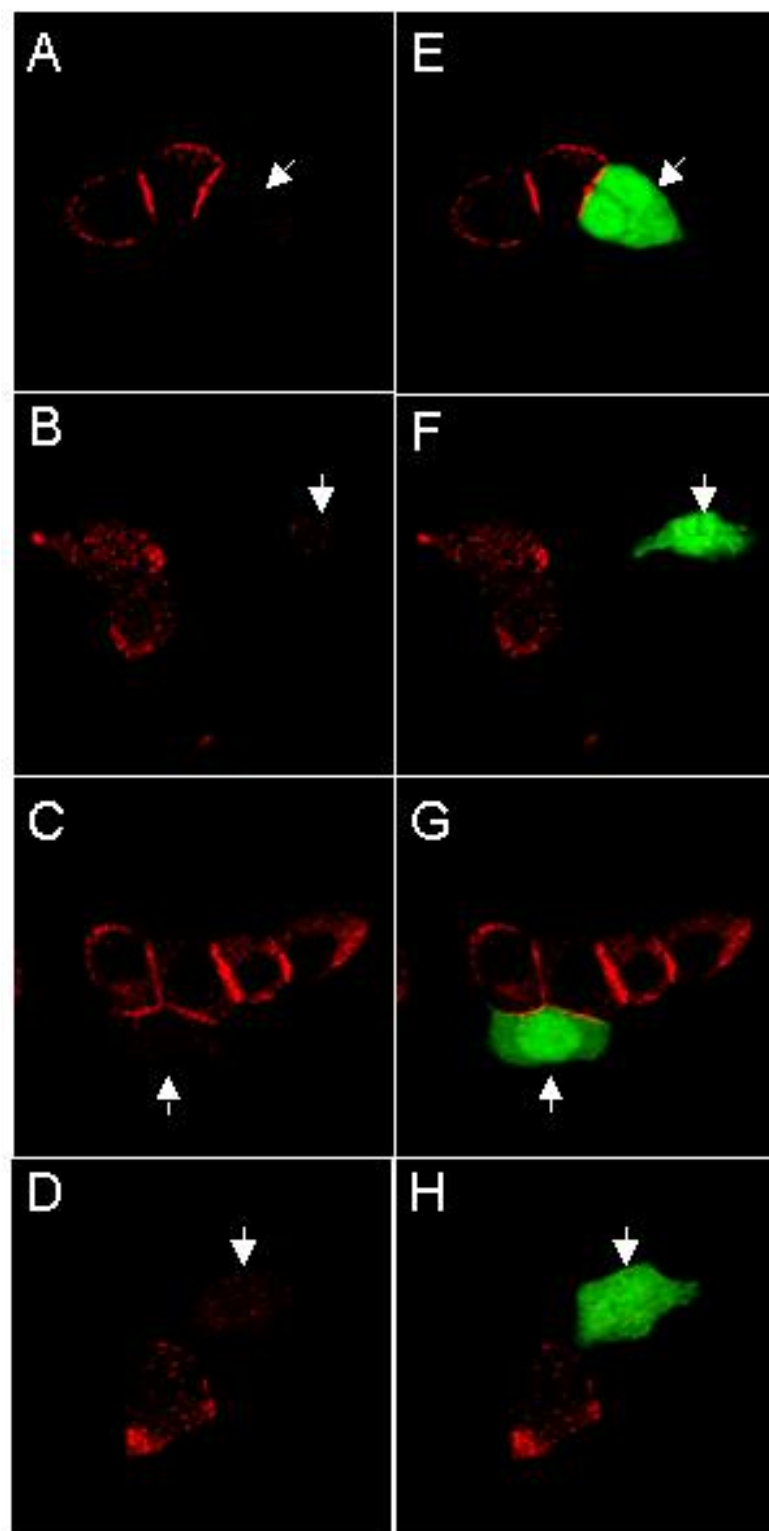


Supplementary Fig.2



Supplementary Fig.2 Effect of ICER overexpression on the expression of Granuphilin, Noc2, Rab3a and Rab27a. INS-1E cells were transiently cotransfected with a plasmid leading to the overexpression of ICER-I γ and with a plasmid encoding GFP. Two days later the cells were fixed and analyzed by confocal microscopy using antibodies against Granuphilin (A,E), Noc2 (B,F), Rab3a (C,G) and Rab27a (D,H). The position of GFP positive cells is indicated by arrows. A,B,C,D: red channel; E,F,G,H overlays of red and green channels.