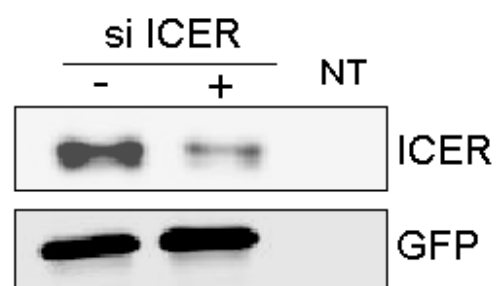
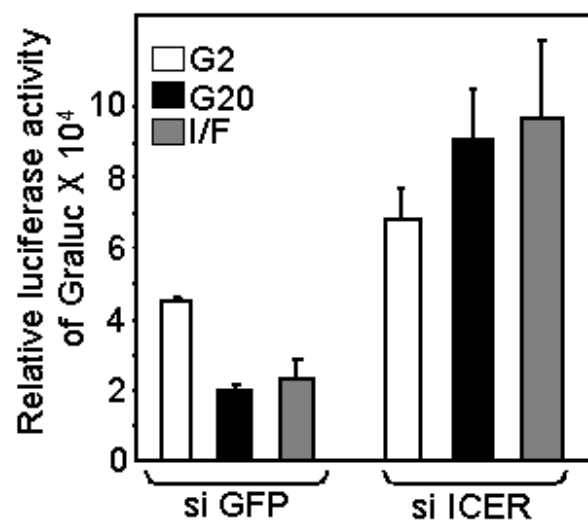


Supplementary Fig.3

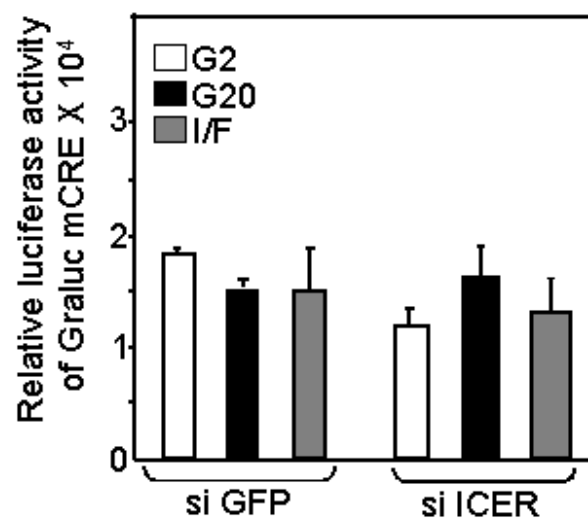
A



B



C



Supplementary Fig.3 Effect of ICER silencing on the *Granuphilin* promoter activity. **A)** 293T cells were transiently transfected with plasmids encoding ICER-I γ and GFP in the presence or absence of an siRNA duplex directed against ICER. Two days later the cells were homogenized and analyzed by Western blotting using antibodies against ICER (upper panel) and against GFP (lower panel). A protein extract obtained from untransfected cells (NT) was loaded in parallel as a negative control. **B)** INS-1E cells were transiently transfected with the plasmid encoding a luciferase reporter gene under the control of the *Granuphilin* promoter (Graluc) and the siRNA duplex directed against ICER (siICER) or a control siRNA directed against GFP (siGFP). The cells were cultured at 2 mM glucose (G2), 20 mM glucose (G20) or at 2 mM in the presence of Forskolin and IBMX (I/F). The luciferase activity was measured two days later. **C)** Same conditions as in **B)** except that the luciferase reporter gene is driven by a *Granuphilin* promoter in which the CRE element is mutated (Graluc mCRE).