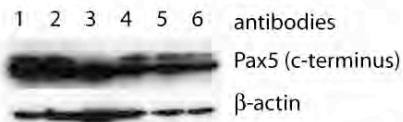
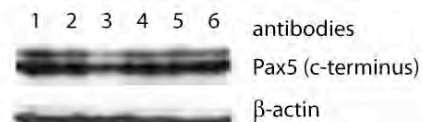


reporter	effector
1 promoter less (pGL2)	pKW2T-Pax5 (a) or pKW2T-Pax5 DBD (b)
2 SV40 promoter	pKW2T-Pax5 (a) or pKW2T-Pax5 DBD (b)
3 c-fms promoter (-425)	pKW2T-Pax5 (a) or pKW2T-Pax5 DBD (b)
4 c-fms promoter (-425) + FIRE-1kb + FIRE	pKW2T-Pax5 (a) or pKW2T-Pax5 DBD (b)
5 c-fms promoter (-425) + FIRE	pKW2T-Pax5 (a) or pKW2T-Pax5 DBD (b)
6 c-fms promoter (-425) + FIRE-1kb	pKW2T-Pax5 (a) or pKW2T-Pax5 DBD (b)
7 SV40 promoter + FIRE	pKW2T-Pax5 (a) or pKW2T-Pax5 DBD (b)
8 SV40 promoter + FIRE-1kb	pKW2T-Pax5 (a) or pKW2T-Pax5 DBD (b)



reporter	effector
1 promoter less (pGL2)	pKW2T-Pax5
2 SV40 promoter	pKW2T-Pax5
3 c-fms promoter (-201)	pKW2T-Pax5
4 c-fms promoter (-180)	pKW2T-Pax5
5 c-fms promoter (-135)	pKW2T-Pax5
6 c-fms promoter (-100)	pKW2T-Pax5



reporter	effector
1 promoter less (pGL2)	pKW2T-Pax5
2 c-fms promoter (-135) wild type	pKW2T-Pax5
3 c-fms promoter (-135) mutant 1	pKW2T-Pax5
4 c-fms promoter (-135) mutant 4	pKW2T-Pax5
5 c-fms promoter (-135) mutant 5	pKW2T-Pax5
6 c-fms promoter (-135) mutant 10	pKW2T-Pax5

**Supplementary Figure 8:** Similar levels of expression of transfected Pax5 (full length and DBD) were confirmed by Western blotting. Transfected cells were lysed in sample buffer and the Pax5 protein was detected by Western blot with either Pax5 C-terminus antibody (for full length Pax5) or Pax5 N-terminus antibody (for DBD).  $\beta$ -actin protein was used as loading control.