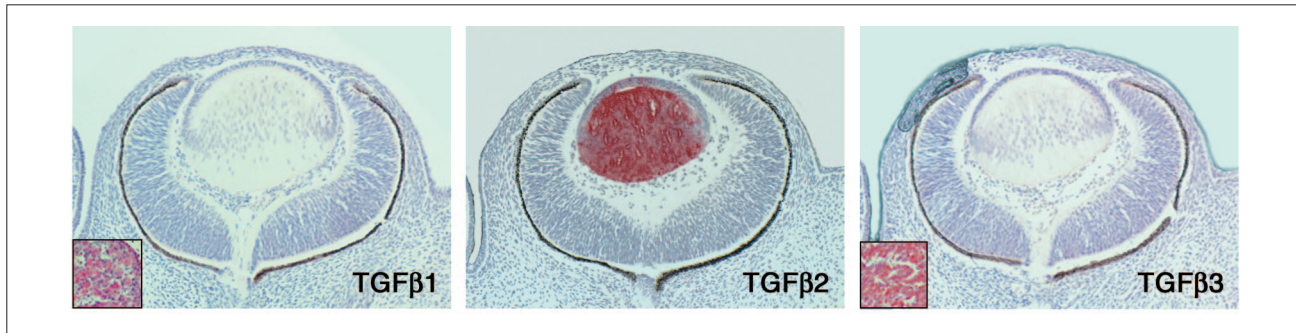


Additional data file 2



Additional figure 2

Expression of TGFβ isoforms during eye formation. Although TGFβ1 (left panel) and TGFβ3 (right panel) are not expressed in the developing eye, the expression of TGFβ2 (red; middle panel) peaks at E13.5 and is restricted to the lens. Insets serve as controls and illustrate areas in the trigeminal ganglia positive for TGFβ1 and 3 on same sections.