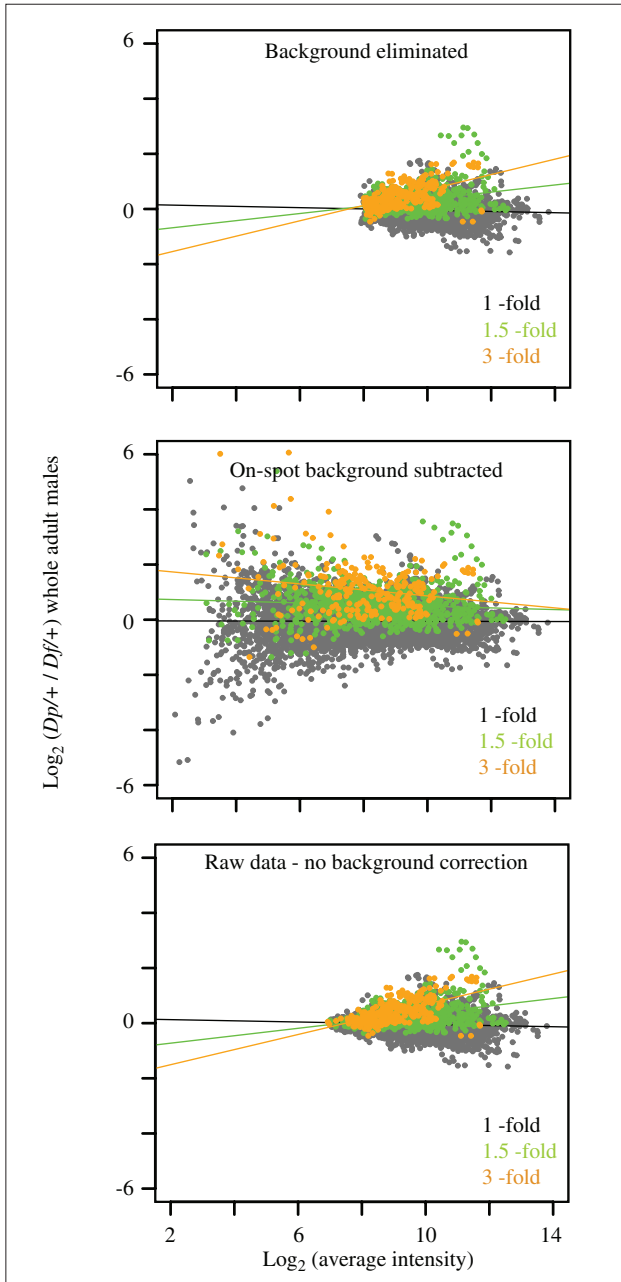


### Additional data file 1



**Figure**  
Effect of background correction method on fold changes in expression ratios. Data were normalized by print-tip loess within each array, and background corrected by one of the following methods: (a) background elimination, (b) on-spot background subtraction, (c) no background correction. Background correction impacts the absolute values of expression ratios. The on-spot background correction which maximizes differences in the data is used in our analyses.