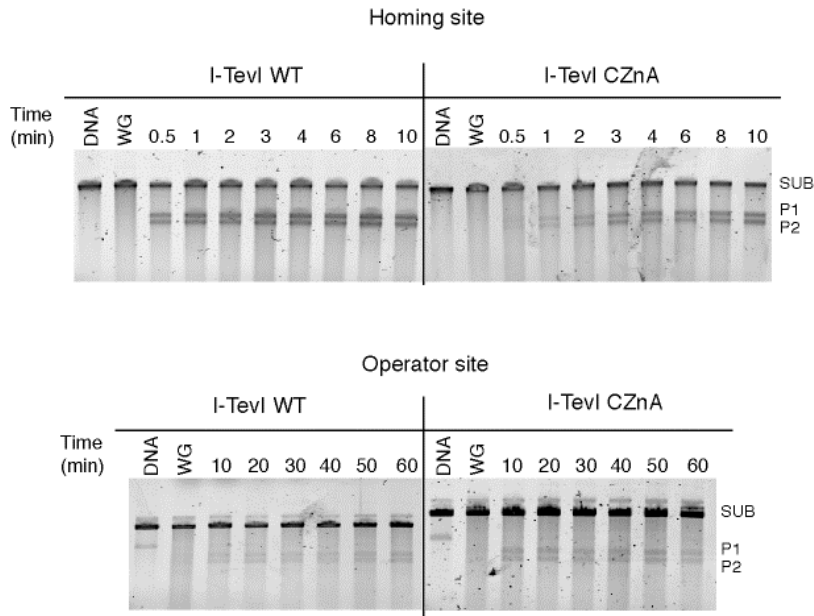


Figure S1



**Supplementary Figure 1.** I-TevI zinc-finger mutants cleave the operator more efficiently than they do wild-type I-TevI. Cleavage of homing or operator site by I-TevI wild-type (WT) and the CZnA variant are compared. The agarose gels show cleavage assays as in Figure 6A except they are time courses with a fixed and equivalent amount of each enzyme. Reaction times are indicated above each lane. WG, unprogrammed wheat germ extract; DNA, substrate