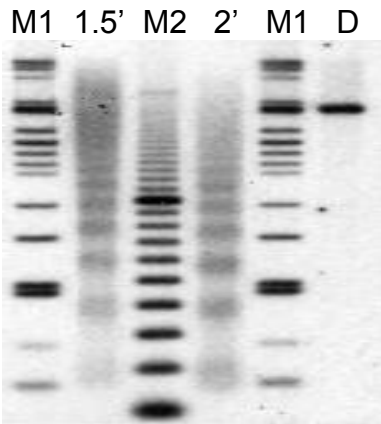


M1 = Afl III marker  
 M2 = 100 bp ladder  
 D = Naked DNA digest  
 Digestion times indicated

Analysis tables:  
 2' lane was analyzed  
 in each case.

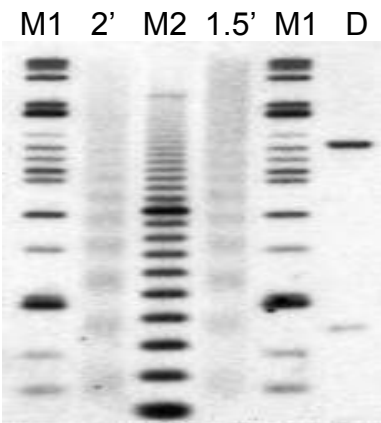
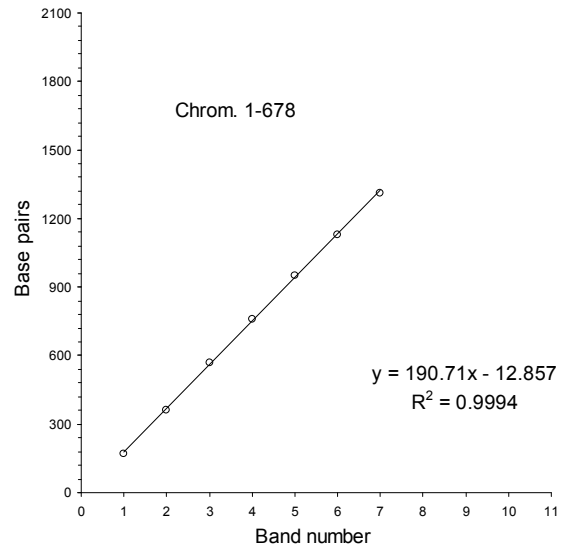
Plots of Base pairs / Band number:



Chrom. 1-678

Band #	bp
7	1310
6	1130
5	950
4	760
3	570
2	360
1	170

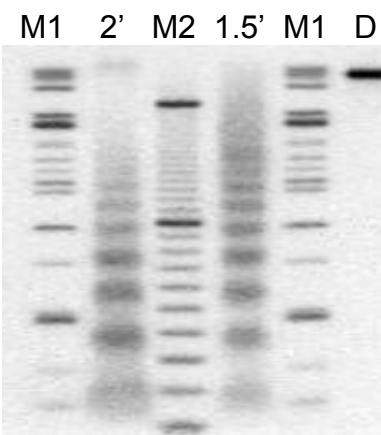
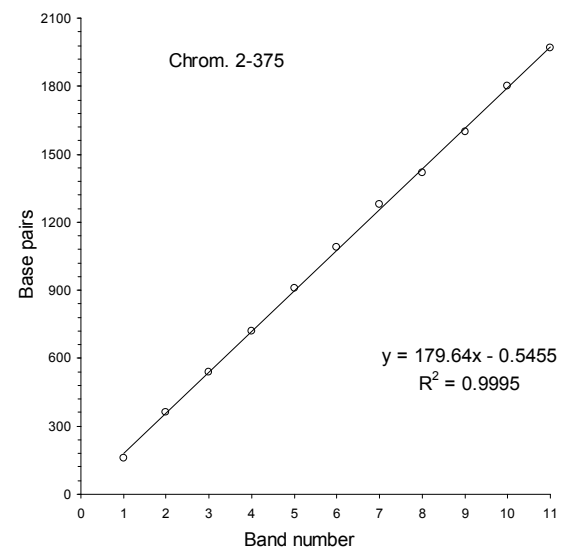
sigma = 9.14734



Chrom. 2-375

Band #	bp
11	1970
10	1800
9	1600
8	1420
7	1280
6	1090
5	910
4	720
3	540
2	360
1	160

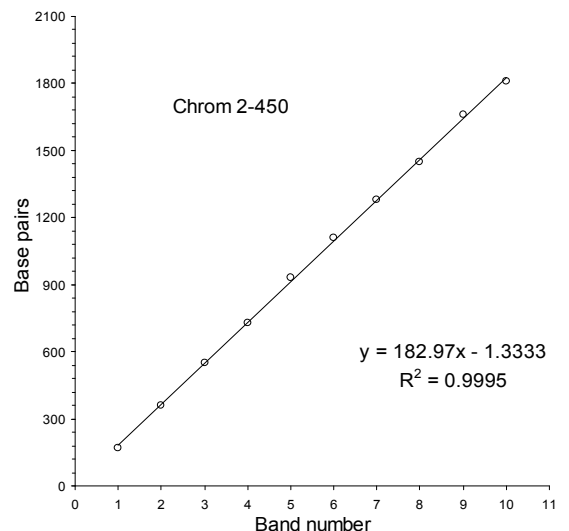
sigma = 12.80498



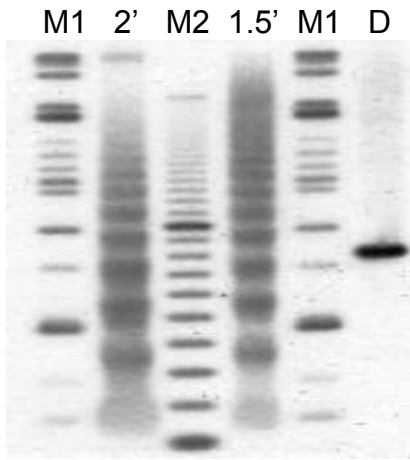
Chrom 2-450

Band #	bp
10	1810
9	1660
8	1450
7	1280
6	1110
5	930
4	730
3	550
2	360
1	170

sigma = 11.49967



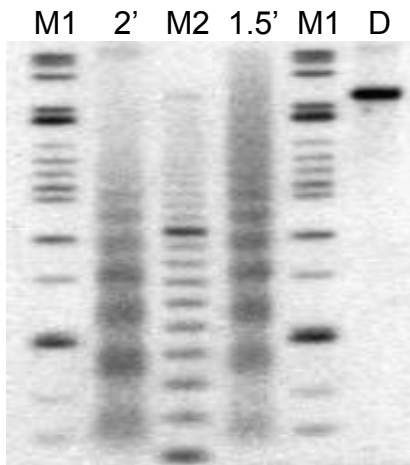
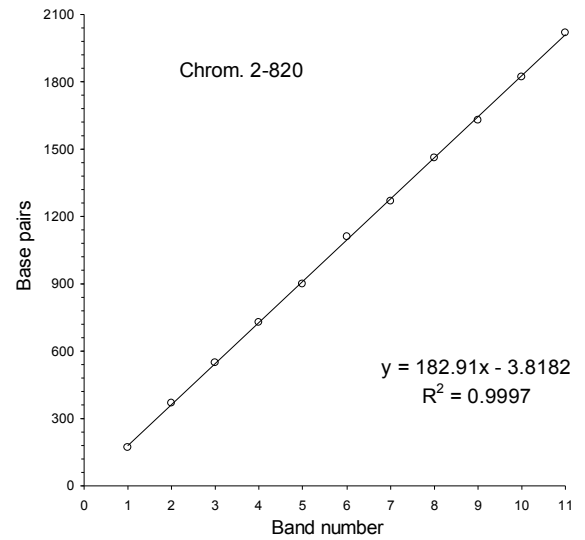
M1 = Afl III marker  
 M2 = 100 bp ladder  
 D = Naked DNA digest  
 Digestion times indicated



Chrom. 2-820

Band #	bp
1	170
2	370
3	550
4	730
5	900
6	1110
7	1270
8	1460
9	1630
10	1820
11	2020

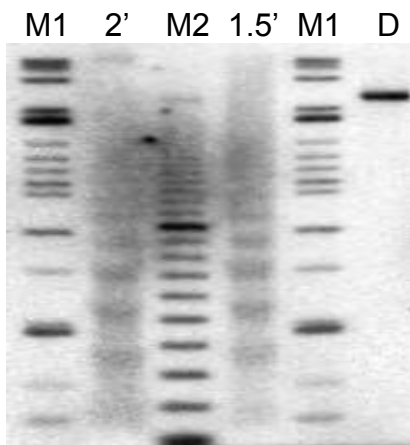
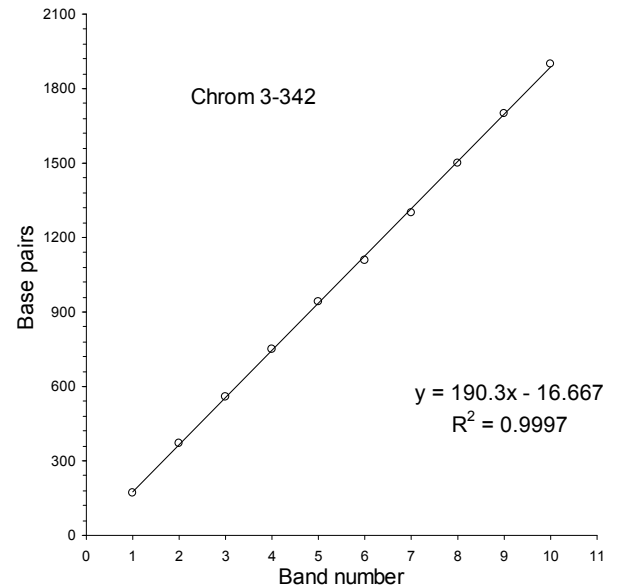
sigma = 9.16335



Chrom. 3-342

Band #	bp
10	1900
9	1700
8	1500
7	1300
6	1110
5	940
4	750
3	560
2	370
1	170

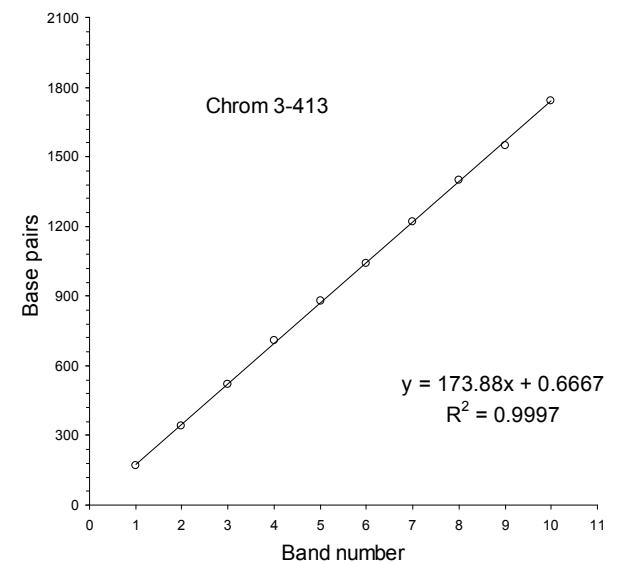
sigma = 9.178387



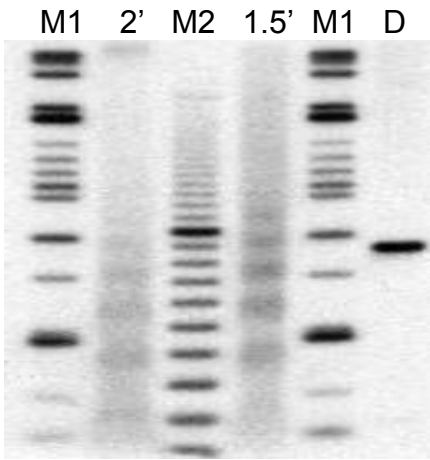
Chrom 3-413

Band #	bp
10	1810
9	1660
8	1450
7	1280
6	1110
5	930
4	730
3	550
2	360
1	170

sigma = 8.478139



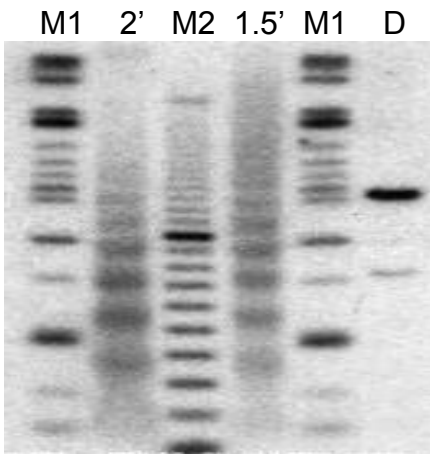
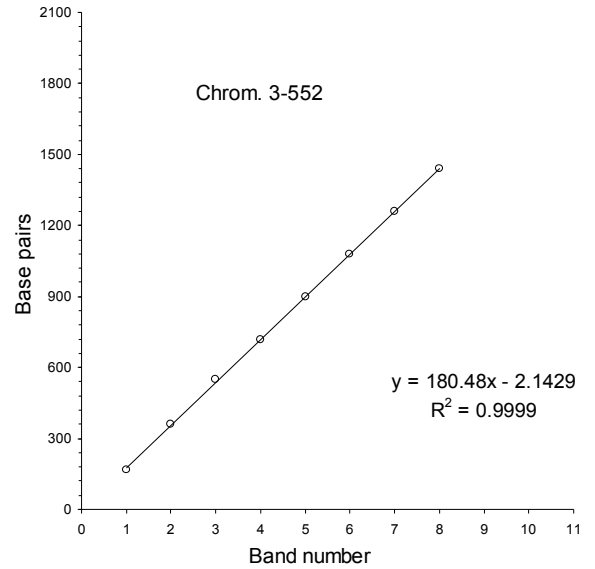
M1 = Afl III marker  
 M2 = 100 bp ladder  
 D = Naked DNA digest  
 Digestion times indicated



Chrom. 3-552

Band #	bp
8	1440
7	1260
6	1080
5	900
4	720
3	550
2	360
1	170

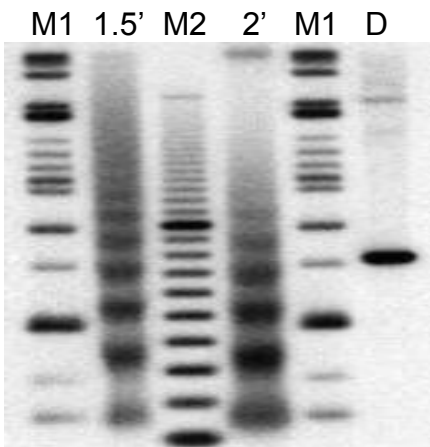
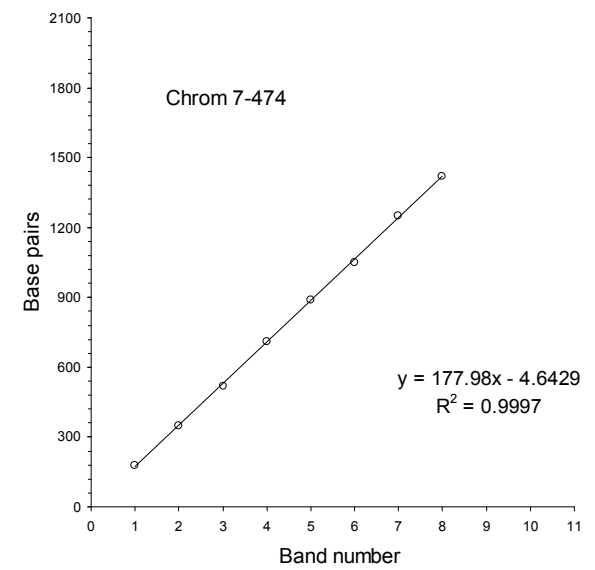
sigma = 4.879538



Chrom. 7-474

Band #	bp
8	1420
7	1250
6	1050
5	890
4	710
3	520
2	350
1	180

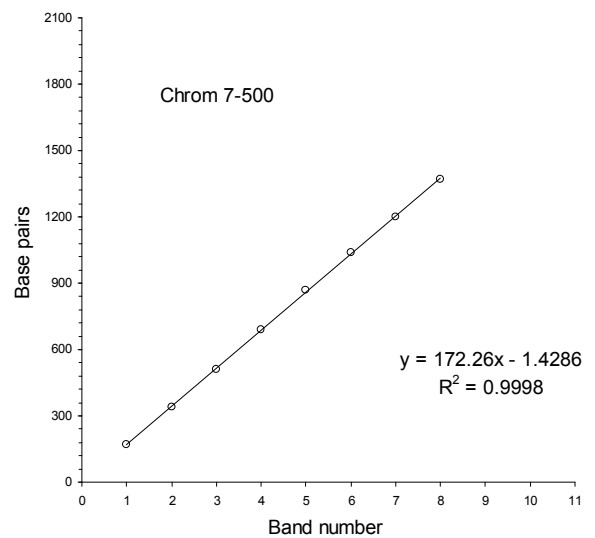
sigma = 7.206587



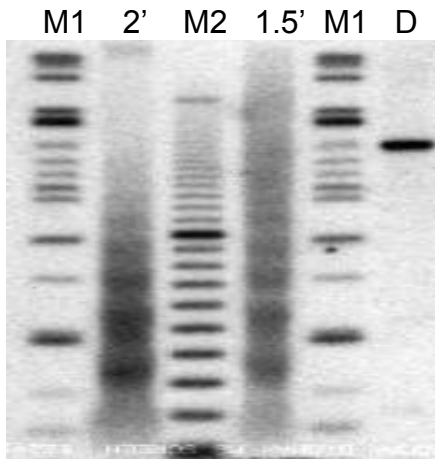
Chrom 7-500

Band #	bp
8	1370
7	1200
6	1040
5	870
4	690
3	510
2	340
1	170

sigma = 5.837591



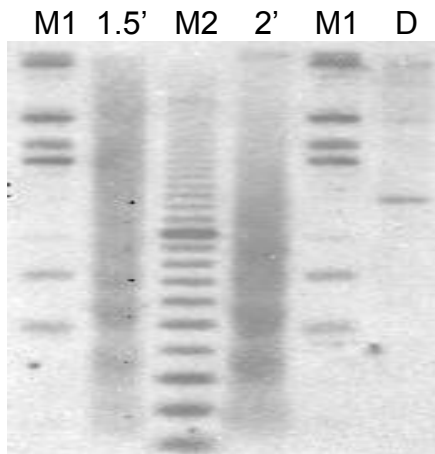
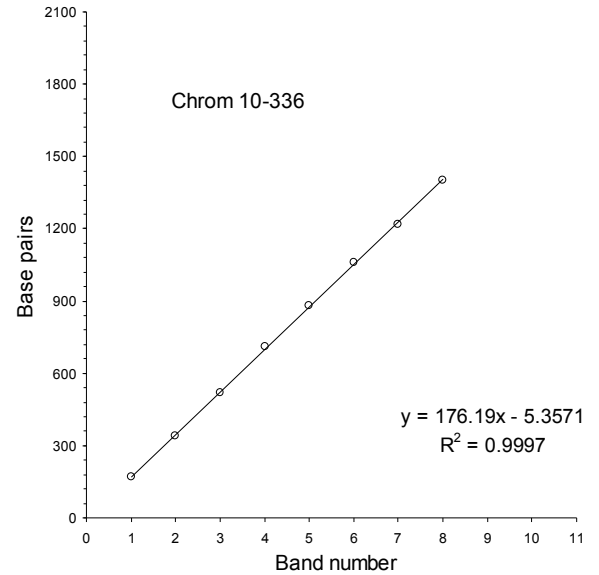
M1 = Afl III marker  
 M2 = 100 bp ladder  
 D = Naked DNA digest  
 Digestion times indicated



Chrom. 10-336

Band #	bp
8	1400
7	1220
6	1060
5	880
4	710
3	520
2	340
1	170

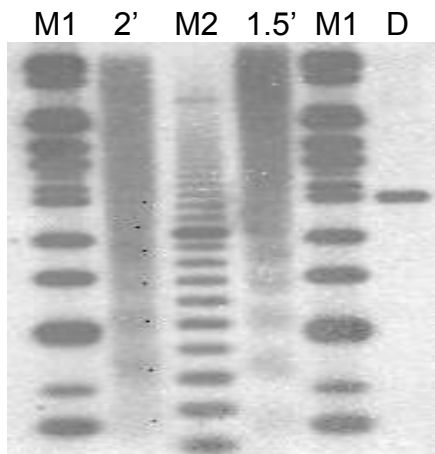
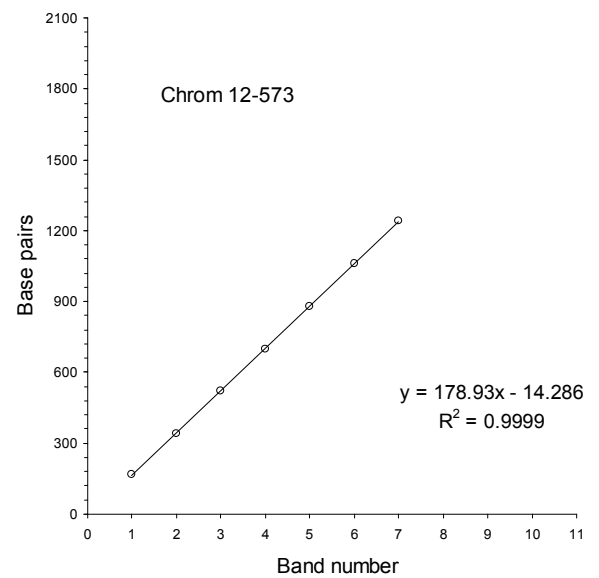
sigma = 6.523767



Chrom. 12-573

Band #	bp
7	1240
6	1060
5	880
4	700
3	520
2	340
1	170

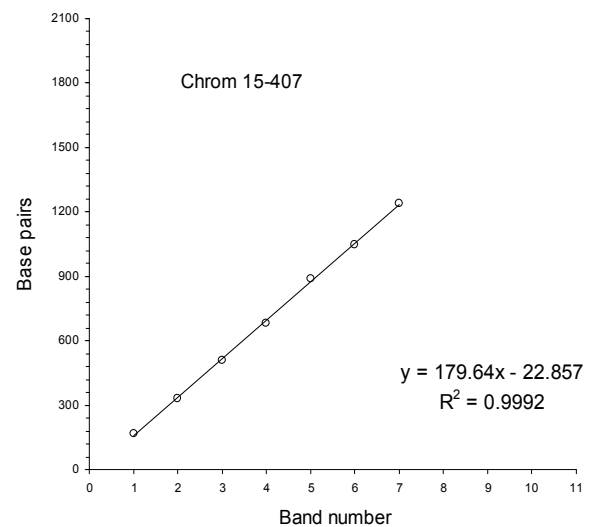
sigma = 2.766423



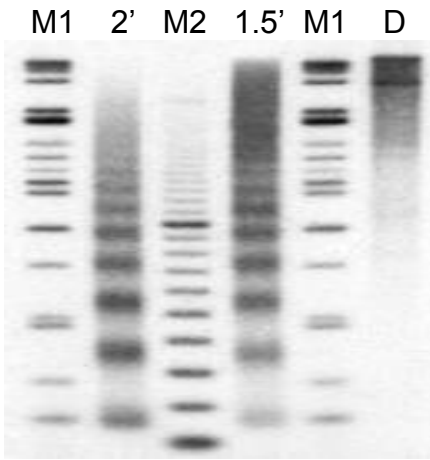
Chrom 15-407

Band #	bp
7	1240
6	1050
5	890
4	680
3	510
2	330
1	170

sigma = 10.47349



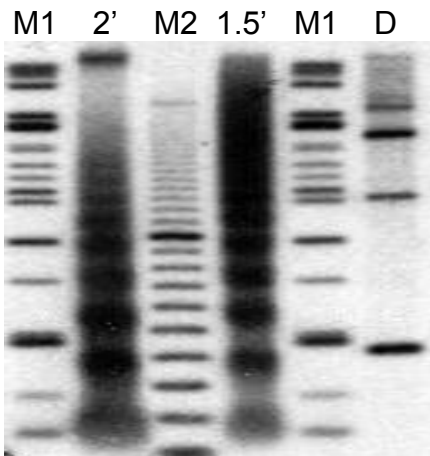
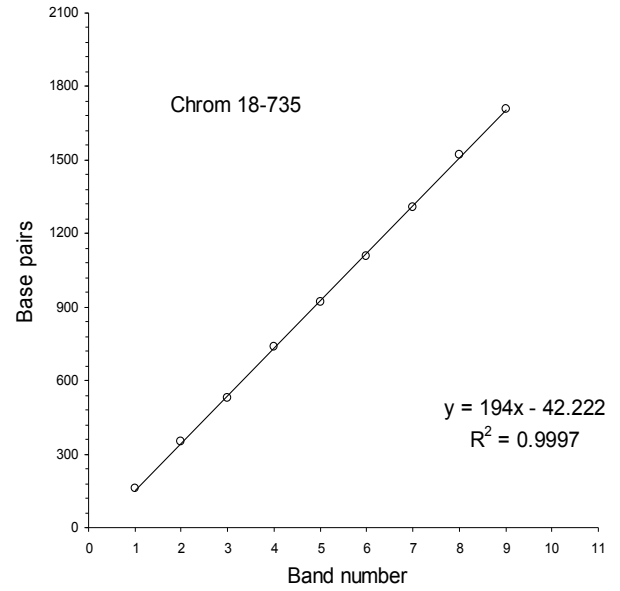
M1 = Afl III marker  
 M2 = 100 bp ladder  
 D = Naked DNA digest  
 Digestion times indicated



Chrom. 18-735

Band #	bp
9	1710
8	1520
7	1310
6	1110
5	920
4	740
3	530
2	350
1	160

sigma = 8.134669



Chrom. 19-395

Band #	bp
8	1490
7	1300
6	1110
5	930
4	730
3	560
2	370
1	170

sigma = 5.721723

