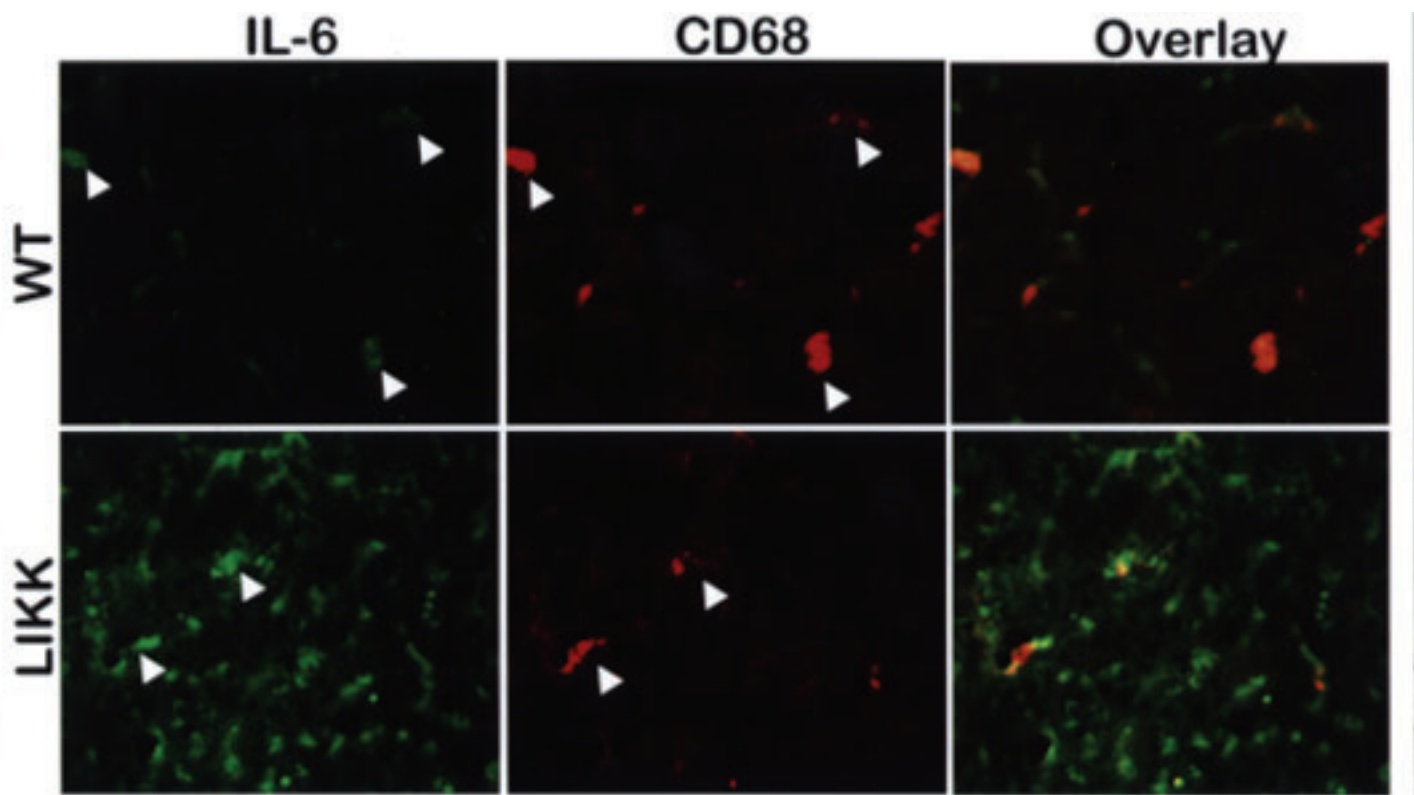
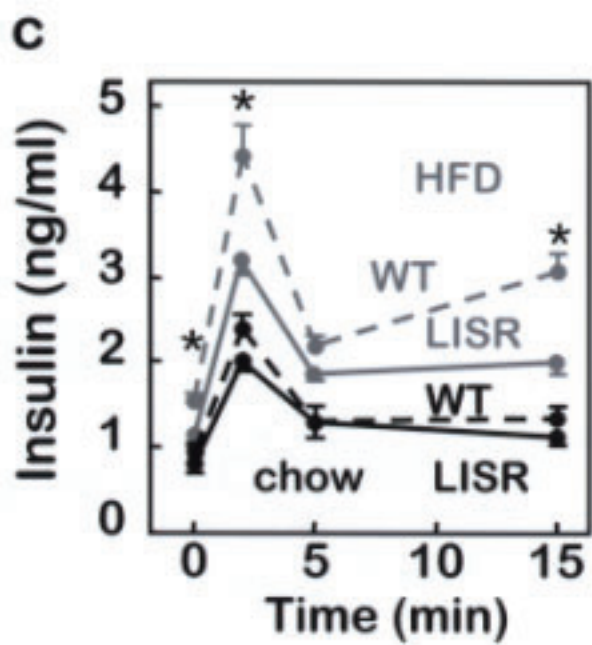
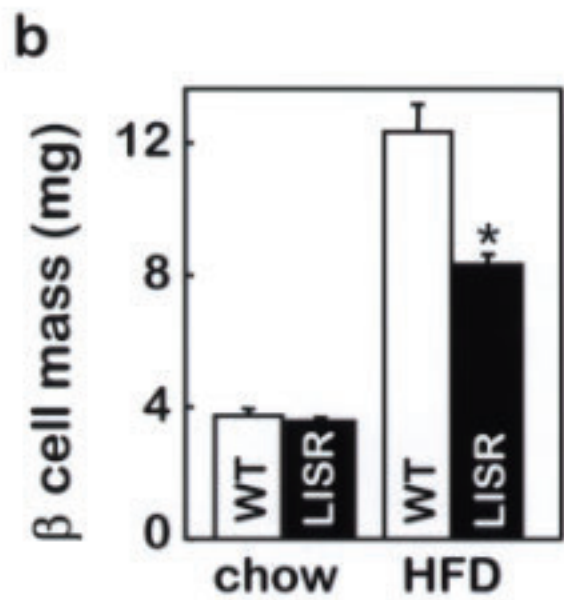
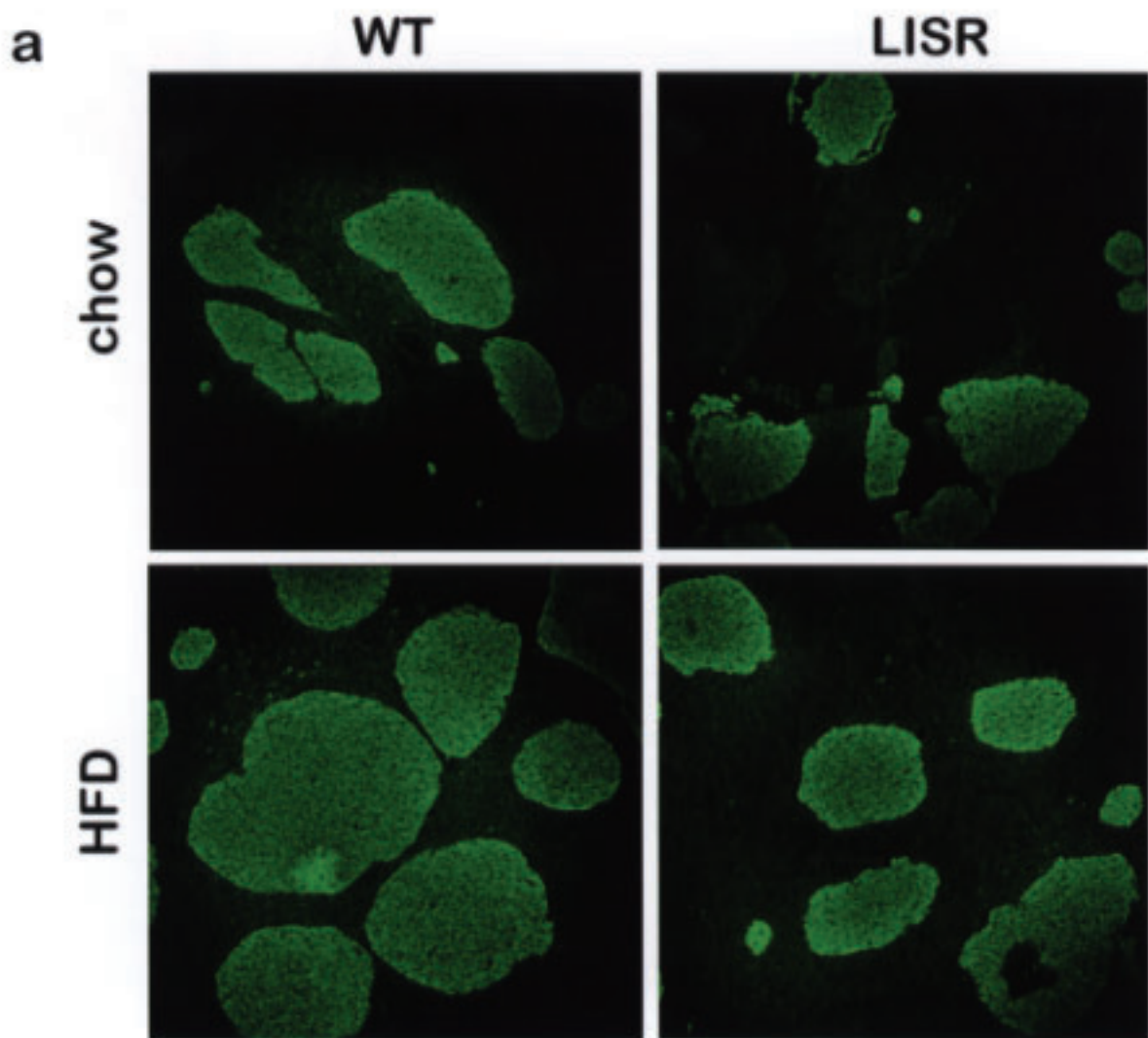


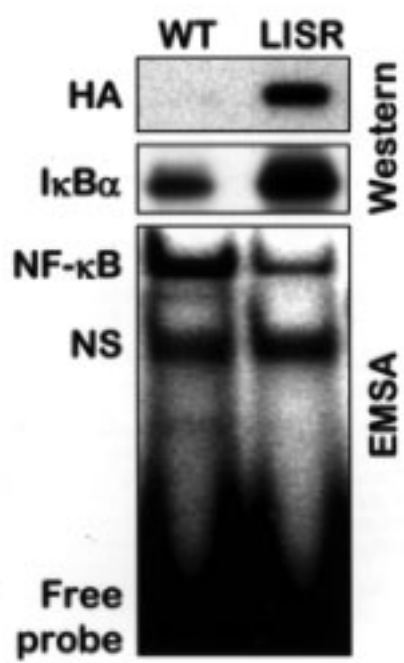
Supplementary Figure 1. β cell morphometry and function in LIKK mice. **(a)** Pancreas sections from 12-week-old LIKK and WT mice were stained for insulin (green) and glucagon (red); nuclei are stained blue. **(b)** β cell mass was quantified as described in the methods. **(c)** Acute insulin response was determined following intraperitoneal glucose administration (3 g/kg).



Supplementary Figure 2. IL-6 localization in liver. Frozen sections of LIKK and WT liver were stained for IL-6 (green) and CD68 (red). White arrows delineate CD68 positive cells.



Supplementary Figure 3. β cell morphometry and function in LISR mice. **(a)** Pancreas sections from 24-week-old LISR and WT mice were stained for insulin (green). **(b)** β cell mass was quantified as described in the methods. **(c)** Acute insulin response was determined following intraperitoneal glucose administration (3 g/kg).



Supplementary Figure 4. Superrepressor concentration and NF- κ B activity in LISR mice. Western blots were performed with antibodies to HA or I κ B α . NF- κ B activity was measured by EMSA in livers of LISR and WT mice. NS, non-specific.