

Supplementary Figure: VHS-GAT-GFP but not GGA1-GFP inhibits the removal of Sx6 from maturing ISGs. Experimental setup as in Fig. 4, except VAMP4-Flag is replaced by Sx6 and probed with anti-Sx6 Ab (red in **A** and **B**, blue in **C** and **D**). (**A and B**), bar= 5 μ m, (**C and D**), bar= 2 μ m. Arrow, ACTH colocalizing with Sx6 at cell tip.

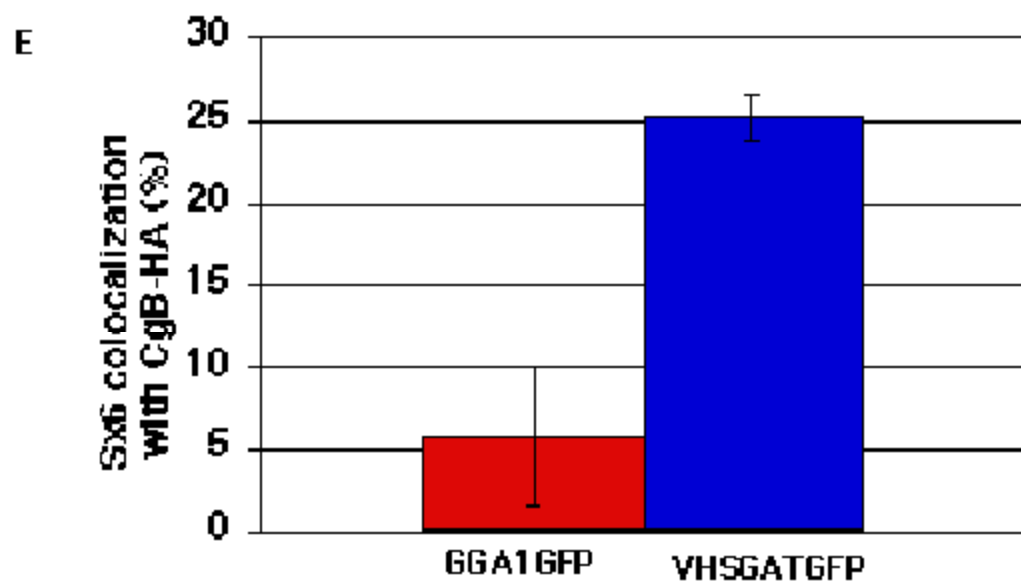
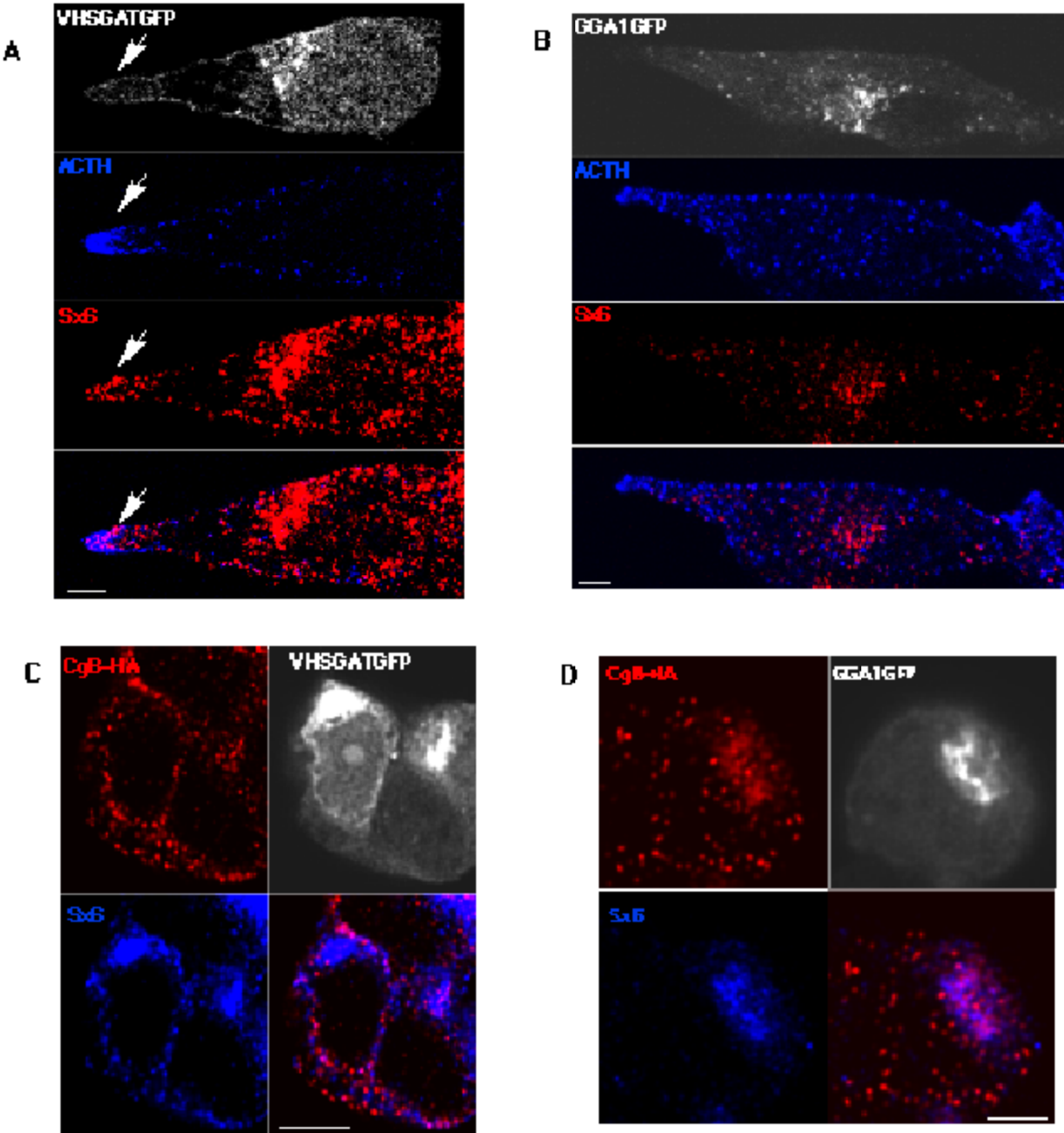


Figure 5