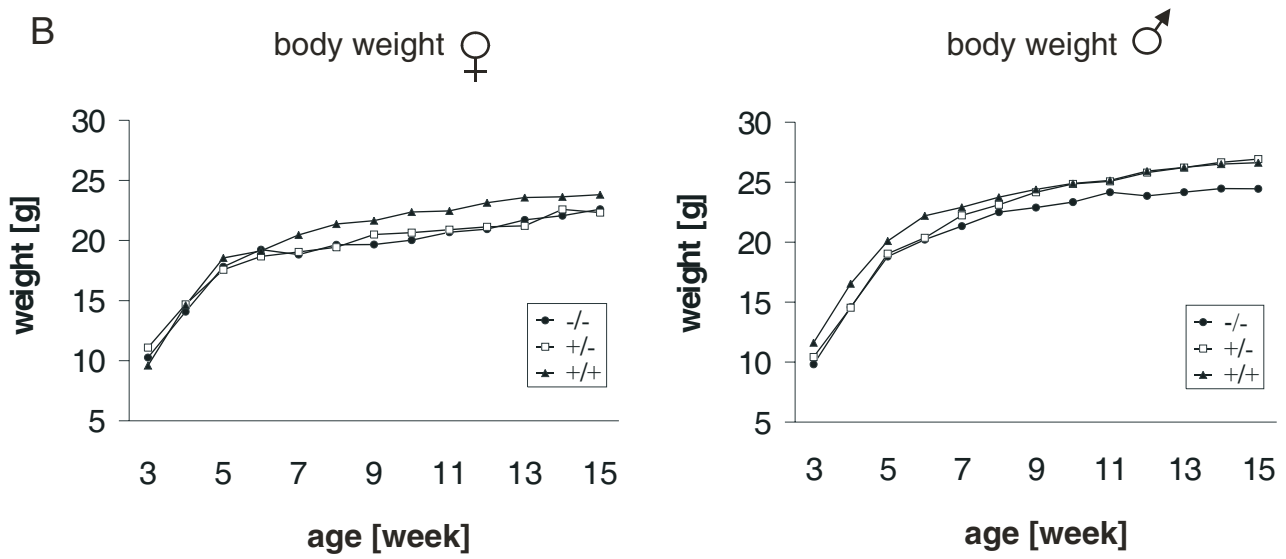


A



B



**Supplementary Figure 1** General characterization of the *mabp1*<sup>-/-</sup> phenotype. (A) Compared to wild-type mice (left panel), *mabp1*-deficient mice possess ruffled up fur and hunched posture (middle panel), and partial paralysis of hind limbs (right panel). (B) Growth curves showing body weights [g] of female (left) and male (right) *mabp1*<sup>+/+</sup> (closed triangles), *mabp1*<sup>+/-</sup> (open rectangles) and *mabp1*<sup>-/-</sup> (closed circles) mice measured between 3 and 15 weeks of age (n=8 for each genotype and gender).