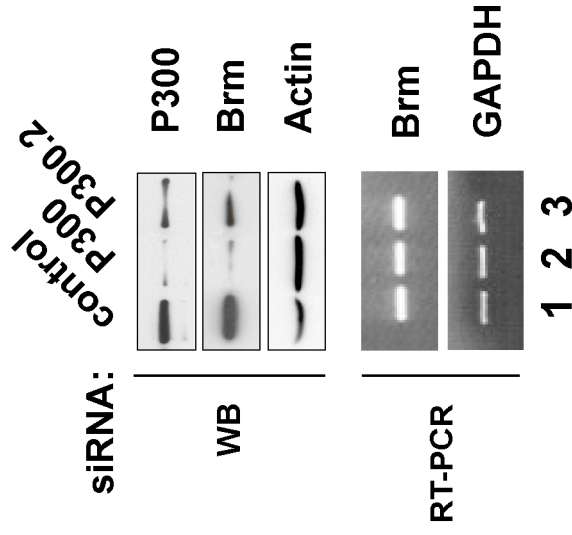
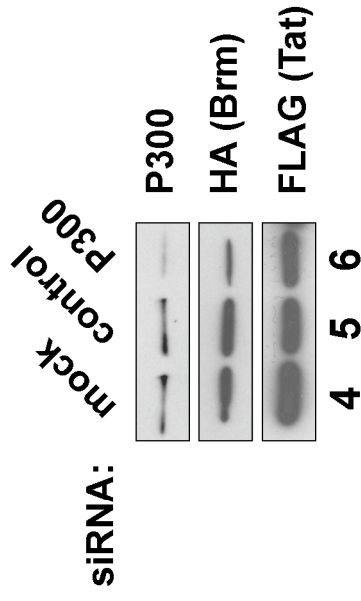


A

Supplementary material 5

Silencing of P300 inhibits Brm levels.

B

A. Knock-down of P300 inhibits Brm protein expression, but not Brm mRNA levels. HeLa cells were transfected with two different siRNA against P300 (P300 and P300.2), and levels of P300, Brm, or actin were analyzed by immunoblotting. Silencing of P300 using both siRNA resulted in the inhibition of Brm protein expression (lanes 1-3). In the same experiment, total RNA were extracted from the cells and levels of Brm cDNA were analyzed by RT-PCR. GAPDH levels were assessed as a RT-PCR control. B. Silencing of P300 inhibits expression of HA-Brm. HeLa cells were first mock transfected or transfected with siRNA against P300 or control. Twenty-four hours later, cells were transfected with expression vectors encoding for either HA-Brm or Flag-Tat under the control of a CMV promoter. Cells were harvested, and proteins were analyzed by SDS-PAGE. HA-Brm and Flag-Tat levels were analyzed using anti-HA or anti-Flag antibodies.