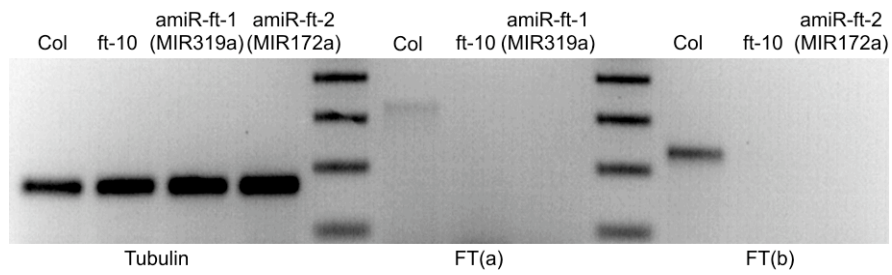


Supplemental Figure 3: Expression of *FT* in leaves of amiR-ft overexpressers.

Oligonucleotides used (5' to 3'):

Tubulin	sense	GAG CCT TAC AAC GCT ACT CTG TCT GTC
	antisense	ACA CCA GAC ATA GTA GCA GAA ATC AAG
FT(a)	sense	GGT GGA GAA GAC CTC AGG AA
	antisense	CAA TTG TAG AAA ACT GCG GC
FT(b)	sense	TGG CCG CAG TTT TCT ACA AT
	antisense	CTC ATT TTC CTC CCC CTC TC