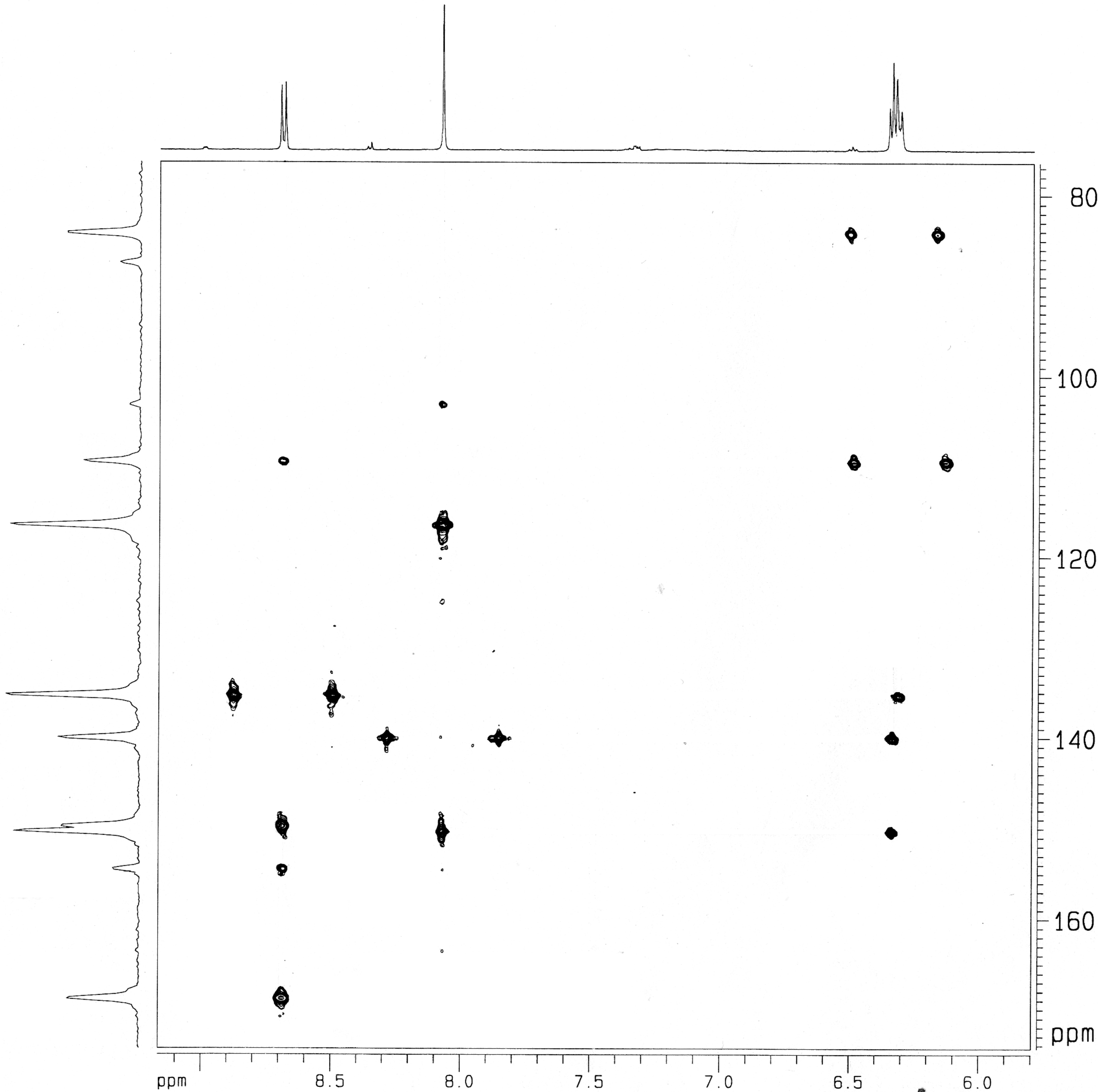


DRX 502: 1H/13C HMBC 298K, inv4lrndpr



Current Data Parameters
NAME michael
EXPNO 3
PROCNO 1

F2 - Acquisition Parameters
Date_ 20000825
Time 2.10
INSTRUM spect
PROBHD 5 mm TXI 1H-1
PULPROG inv4lrndpr
TD 2048
SOLVENT D2O
NS 32
DS 4
SWH 5000.000 Hz
FIDRES 2.441406 Hz
AQ 0.2048500 sec
RG 4096
DW 100.000 usec
DE 6.00 usec
TE 300.0 K
D0 0.0000300 sec
D1 1.5000000 sec
D6 0.0550000 sec
D11 0.0200000 sec
D12 0.0000200 sec
D13 0.0000300 sec
IN0 0.00002209 sec

===== CHANNEL f1 =====
NUC1 1H
P1 7.05 usec
P2 14.10 usec
PL1 0.00 dB
PL9 70.00 dB
SFO1 500.1323504 MHz

===== CHANNEL f2 =====
NUC2 13C
P3 16.40 usec
PL2 -2.00 dB
SFO2 125.7715724 MHz

F1 - Acquisition parameters
ND0 2
TD 450
SFO1 125.7716 MHz
FIDRES 50.304974 Hz
SW 179.987 ppm

F2 - Processing parameters
SI 2048
SF 500.1300000 MHz
WDW GSINE
SSB 2
LB 0.00 Hz
GB 0
PC 1.00

F1 - Processing parameters
SI 1024
MC2 QF
SF 125.7577390 MHz
WDW GSINE
SSB 2
LB 0.00 Hz
GB 0

2D NMR plot parameters
CX2 15.00 cm
CX1 15.00 cm
F2PLO 9.166 ppm
F2LO 4584.24 Hz
F2PHI 5.798 ppm
F2HI 2899.67 Hz
F1PLO 174.338 ppm
F1LO 21924.40 Hz
F1PHI 76.425 ppm
F1HI 9610.98 Hz
F2PPMCM 0.22455 ppm/cm
F2HZCM 112.30470 Hz/cm
F1PPMCM 6.52759 ppm/cm
F1HZCM 820.89459 Hz/cm