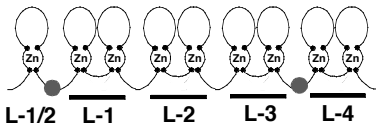
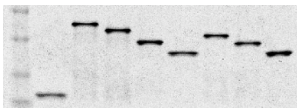


# FHL2

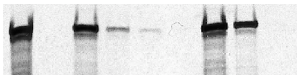


MW

64  
50  
36  
30



Input  
GST  
FHL2  
LIM 1-4  
LIM 2-4  
LIM 3-4  
LIM 1/2-3  
LIM 1/2-2  
LIM 2-3



%WT

	%WT
FHL2	100
LIM 1-4	7
LIM 2-4	2
LIM 3-4	0
LIM 1/2-3	160
LIM 1/2-2	39
LIM 2-3	0