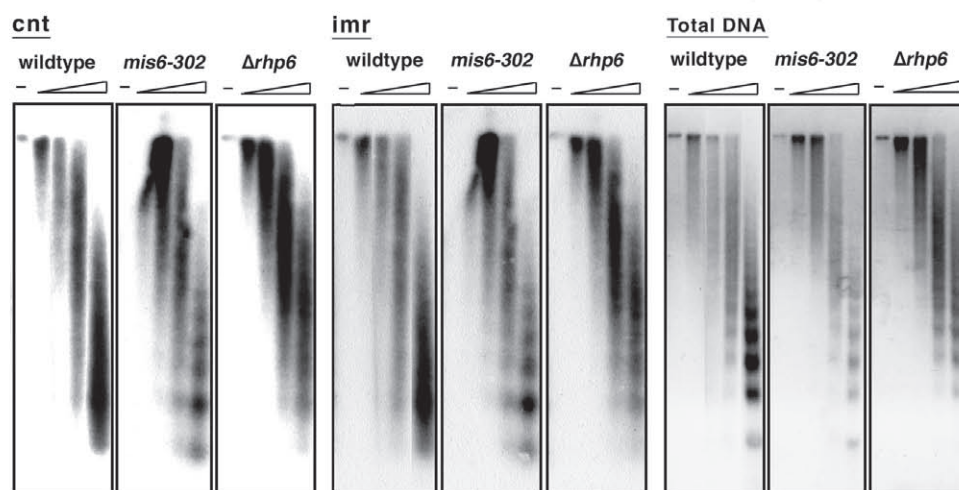


Supplemental figure 2



Supplemental figure 2

$\Delta rhp6$ mutant cells showed basically normal micrococcal nuclease digestion patterns in the inner centromere. The specialized centromere chromatin structure in $\Delta rhp6$ mutant cells was examined. The smeared patterns within the central centromere (*cnt1* and *imr1*) in $\Delta rhp6$ cells was remained. The experimental procedure is described in Materials and methods. Nuclear chromatin were prepared from wild-type, *mis6-302* and $\Delta rhp6$ cells that were cultured at 36°C for 6 hr, and digested with 250U/ml of micrococcal nuclease for 0, 1, 2, 4 and 8 min, followed by agarose gel electrophoresis and Southern hybridization using the two centromeric DNA probes, *cnt1* and *imr1* (shown in Fig. 5B). The gel staining patterns using ethidium bromide are also shown.