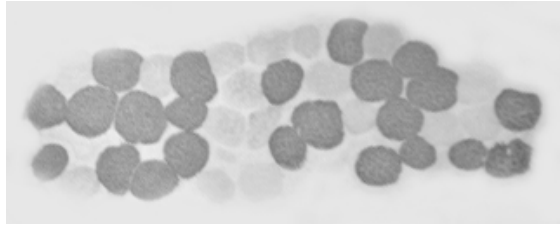


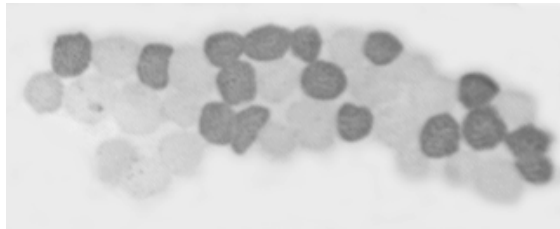
fig in supplemental material

A



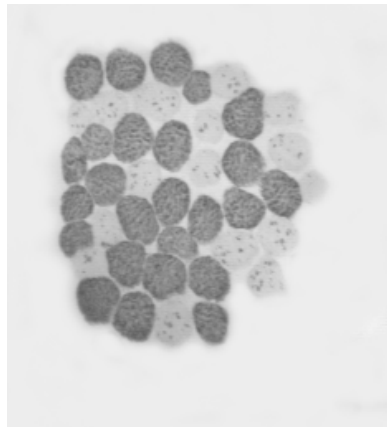
BB  
type 2A

B



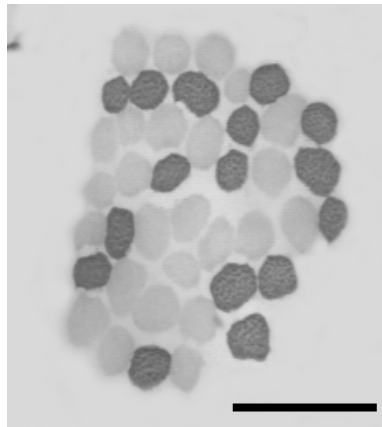
BB  
type 1

C



CTRL type 2A

D



CTRL type 1

### **Fig in supplemental material**

Cross-sections of frozen bundles of muscle fibres from a BB subject (panel AB) and from a control subject (panel CD) used to determine the larger and smaller diameter of individual slow fibres (type 1) and of a fast fibre type (type 2A). The anti MHC-1 antibody (F8) and the anti MHC-2A antibody (SC-71) were used to identify type 1 and type 2A fibres respectively. Type 2A fibres are stained in panel A and C. Type 1 fibres are stained in panel B and D. Scale bar (panel D) is 300  $\mu\text{m}$ .