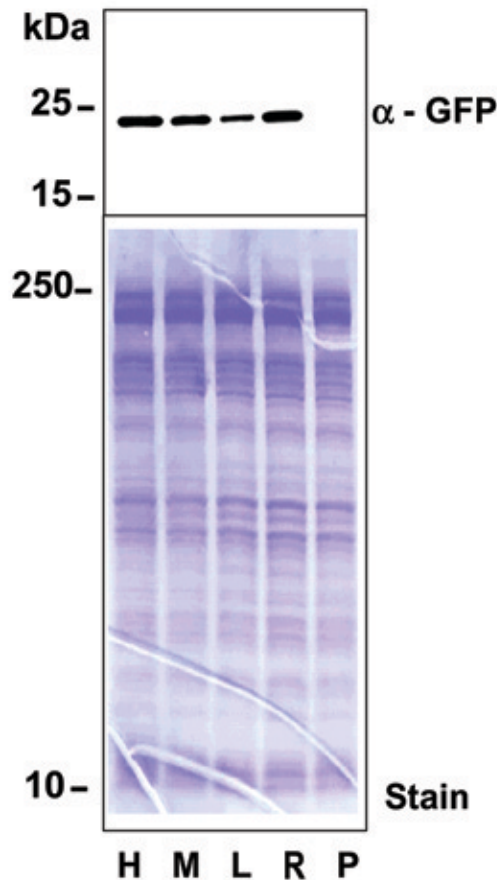


Western Analysis of GFP in Sorted Worms.



Supplementary Figure 1. Whole worm GFP fluorescence correlates with total GFP protein content. Ten hours after a 2-hour, sub-lethal heat shock, a TJ375 adult population was sorted into several cohorts based on absolute GFP fluorescence level (High, H; Median M; Low, L; Random selection, R; each representing a 2% window of the entire population). An equal number of worms ($N = 50$) from each group was then subjected to immuno-analysis using an α -GFP antibody (upper panel). GFP fluorescence levels were found to correlate positively with GFP protein levels. No GFP signal was detectable in a random sample of worms taken before the heat-shock was applied (Pre-heat, P). Coomassie Blue was used to confirm equal lane loading (lower panel).