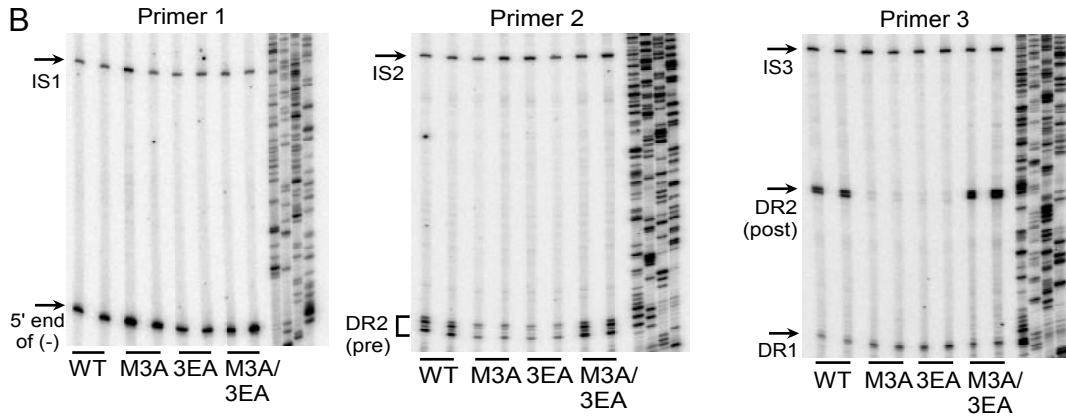


Primer	Measurement on RC DNA	Measurement on DL DNA
1	(-) DNA	(-) DNA
2	(+) DNA priming from DR2 (pre-circularization)	no informative signal
3	(+) DNA priming from DR2 (post-circularization)	(+) DNA priming from DR1 (<i>in situ</i> priming)



$$\text{primer translocation} = \frac{\text{DR2}(\text{primer 2})/\text{IS2}}{(-)\text{-strand}(\text{primer 1})/\text{IS1}}$$

$$\text{circularization} = \frac{\text{DR2}(\text{primer 3})/\text{IS3}}{\text{DR2}(\text{primer 2})/\text{IS2}}$$

$$\text{primer utilization} = \frac{\text{DR2}(\text{primer 2})/\text{IS2} + \text{DR1}(\text{primer 3})/\text{IS3}}{(-)\text{-strand}(\text{primer 1})/\text{IS1}}$$