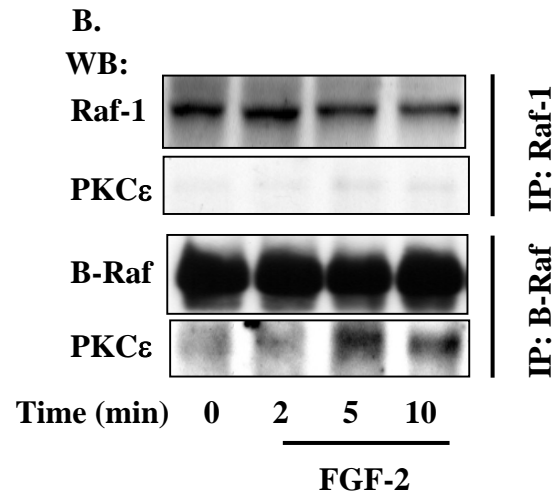
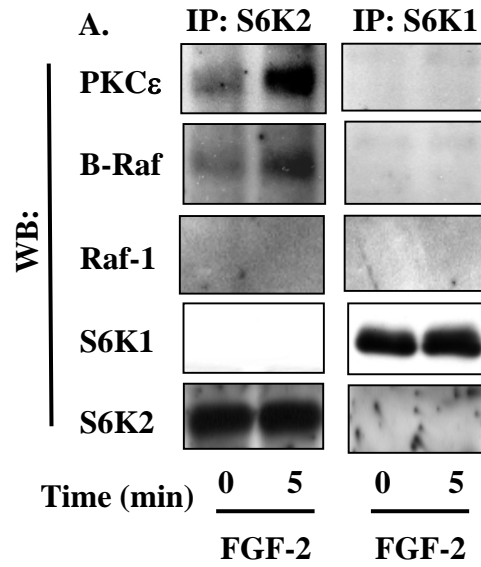


## Supp Figure 2



**Supplementary Figure 2: PKC $\epsilon$  forms a multiprotein complex with B-Raf and S6K2 in H510 cells.** (A and B) H510 cells in SFM were treated with FGF-2 for the times indicated. Cell lysates were subjected to immunoprecipitation with either S6K1 or 2 (A), B-Raf or Raf-1 (B) antibodies prior to SDS-PAGE/Western Blotting (WB) for S6K1 and 2, B-Raf, Raf-1 and PKC $\epsilon$ . (A and B) Results shown are representative of at least three independent experiments.