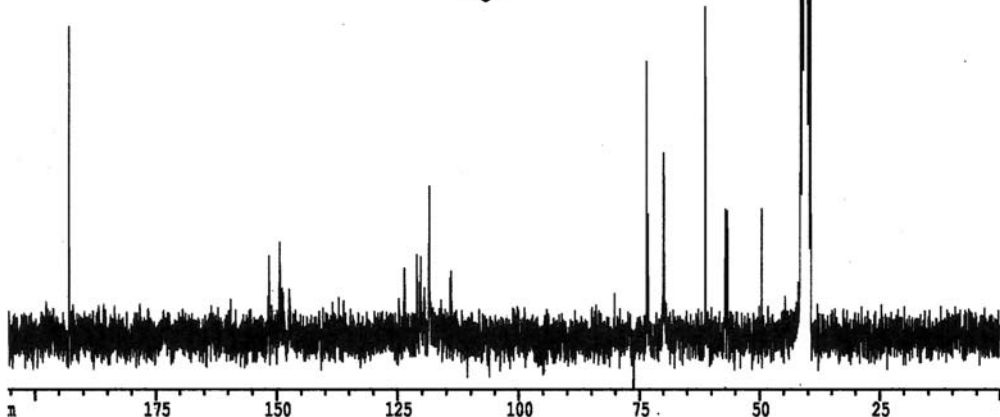
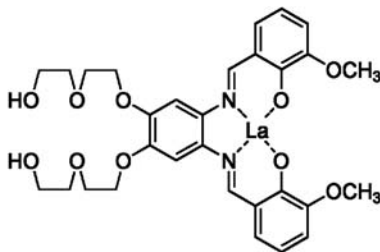


192.783

151.390  
149.241

123.426  
120.857  
120.039  
118.419  
114.046  
113.841

73.372  
73.118  
69.840  
69.715  
61.077  
56.919  
56.493  
49.402  
41.319  
40.985  
40.652  
40.318  
39.984  
39.650  
39.316



Current Data Parameters  
 NAME salenJ  
 EXPNO 2  
 PROCNO 1

F2 - Acquisition Parameters  
 Date\_ 20050910  
 Time\_ 14.20  
 INSTRUM spect  
 PROBHD 5 mm QNP 1H  
 PULPROG zgpg30  
 TD 16384  
 SOLVENT NS  
 NS 2960  
 DS 2  
 SWH 15723.271 Hz  
 FIDRES 0.959672 Hz  
 AQ 0.5210612 sec  
 RG 14596.5  
 DW 31.800 usec  
 DE 8.00 usec  
 TE 300.0 K  
 D1 2.0000000 sec  
 d11 0.0300000 sec  
 d12 0.0002000 sec

----- CHANNEL f1 -----  
 NUC1 13C  
 P1 8.00 usec  
 PL1 0.00 dB  
 SFO1 62.9021320 MHz

----- CHANNEL f2 -----  
 CPDPRG2 waltz16  
 NUC2 1H  
 PCPD2 80.00 usec  
 FL2 120.00 dB  
 FL12 22.00 dB  
 FL13 22.00 dB  
 SFO2 250.1310005 MHz

F2 - Processing parameters  
 SI 16384  
 SF 62.8952140 MHz  
 WDW EM  
 SSB 0  
 LB 1.00 Hz  
 GB 0  
 PC 1.40

ld NMR plot parameters  
 CX 19.00 cm  
 F1P 210.000 ppm  
 F1 13208.00 Hz  
 F2P 0.000 ppm  
 F2 0.00 Hz  
 PPMCM 11.05263 ppm/cm  
 HZCM 695.15765 Hz/cm