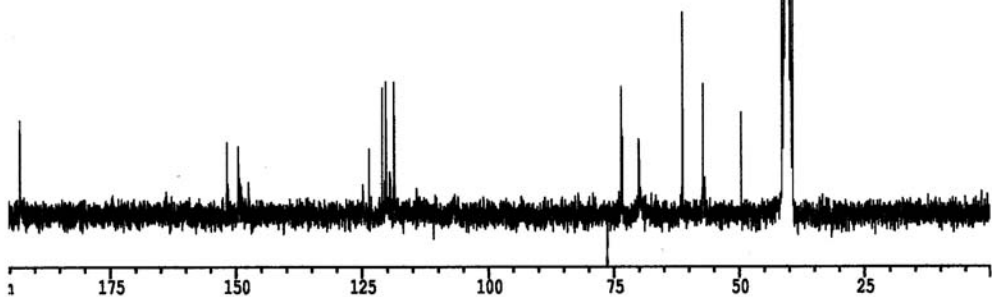
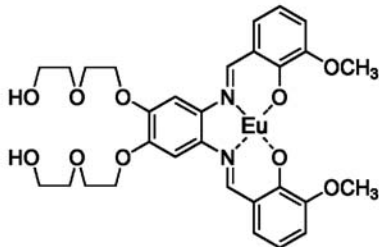


192.807

151.588  
149.282  
149.049  
147.281

123.418  
120.859  
120.079  
119.293  
118.449

73.375  
73.128  
69.848  
61.086  
56.959  
56.625  
49.420  
41.224  
40.890  
40.556  
40.222  
39.888  
39.555  
39.221



Current Data Parameters  
NAME compound5  
EXPNO 3  
PROCNO 1

F2 - Acquisition Parameters

Date\_ 20050909  
Time 13.47  
INSTRUM spect  
PROBHD 5 mm QNP 1H  
PULPROG zgpg30  
TD 16384  
SOLVENT  
NS 3912  
DS 2  
SMR 15723.271 Hz  
FIDRES 0.959672 Hz  
AQ 0.5210612 sec  
RG 14596.5  
DW 31.800 usec  
DE 8.00 usec  
TE 300.0 K  
D1 2.00000000 sec  
d11 0.03000000 sec  
d12 0.00002000 sec

----- CHANNEL f1 -----

NUC1 13C  
P1 8.00 usec  
PL1 0.00 dB  
SFO1 62.9021320 MHz

----- CHANNEL f2 -----

CPDPRG2 waltr16  
NUC2 1H  
PCPD2 80.00 usec  
PL2 120.00 dB  
PL12 22.00 dB  
PL13 22.00 dB  
SFO2 250.1310005 MHz

F2 - Processing parameters

SI 16384  
SF 62.8952140 MHz  
WDW EM  
SSB 0  
LB 1.00 Hz  
GB 0  
PC 1.40

1D NMR plot parameters

CX 19.00 cm  
F1P 200.000 ppm  
F1 12579.04 Hz  
F2P 0.000 ppm  
F2 0.00 Hz  
FPMCH 10.52632 ppm/cm  
HZCM 662.05487 Hz/cm