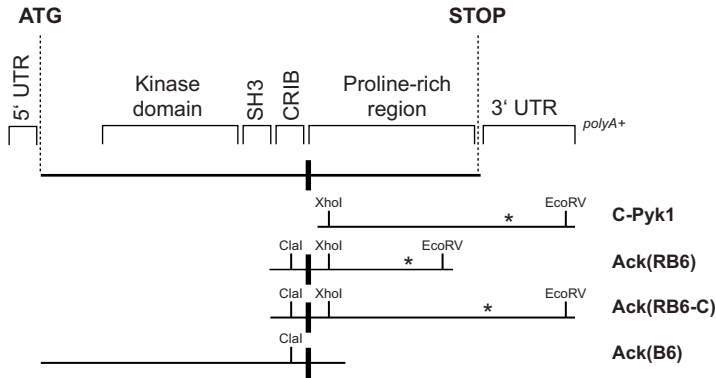


A

B

h-Ack*	MGSRAQKSAG	NAELWEPLPE	GRPRPAGTSS	AVSAWASLKL	CLRGGSGRRQ	RLGGGR	MQPE	60
h-Ack	~~~~~	~~~~~	~~~~~	~~~~~	~~~~~	~~~~~	MQPE	4
m-Ack	~~~~~	~~~~~	~~~~~	~~~~~	~~~~~	~~~~~	MQPE	4
h-Ack*	EGHRLAAGAA	VRGAAATVLL	RLRDDLNVTR	LSHFHEYVKNE	DLEKIGMGRP	GQRRRLWEAVK		120
h-Ack	EGTGWLLELL	SEVQLQQYFL	RLRDDLNVTR	LSHFHEYVKNE	DLEKIGMGRP	GQRRRLWEAVK		64
m-Ack	EGTGWLLELL	SEVQLQQYFL	RLRDDLNVTR	LSHFHEYVKNE	DLEKIGMGRP	GQRRRLWEAVK		64
h-Ack*	RRKALCKRKS	WMSKVFSGKR	LEAEFPPHHS	QSTFRKTS PA	PGGPAGEG PL	QSLTCLIGEK		180
h-Ack	RRKALCKRKS	WMSKVFSGKR	LEAEFPPHHS	QSTFRKTS PA	PGGPAGEG PL	QSLTCLIGEK		124
m-Ack	RRKAMCKRKS	WMSKVFSGKR	LEAEFPPHHS	QSTFRKTS PA	PGGPAGEG PL	QSLTCLIGEK		124
h-Ack*	DLRRLLEKLG D	G S F G V V R R G E	WDAPSGKTVS	VAVKCLKPDV	LSQPEAMDDF	IREVNAMHSL		240
h-Ack	DLRRLLEKLG D	G S F G V V R R G E	WDAPSGKTVS	VAVKCLKPDV	LSQPEAMDDF	IREVNAMHSL		184
m-Ack	DLRRLLEKLG D	G S F G V V R R G E	WDAPAGKTVS	VAVKCLKPDV	LSQPEAMDDF	IREVNAMHSL		184
h-Ack*	DHRNLIIRLYG	VVLTPPMKMV	TELA PLGSL L	DRLRKHQGHF	LLGTL SRYAV	QVAEGMGYLE		300
h-Ack	DHRNLIIRLYG	VVLTPPMKMV	TELA PLGSL L	DRLRKHQGHF	LLGTL SRYAV	QVAEGMGYLE		244
m-Ack	DHRNLIIRLYG	VVLTLPMKMV	TELA PLGSL L	DRLRKHQGHF	LLGTL SRYAV	QVAEGMAYLE		244
h-Ack*	SKRFIHRDLA	ARNLLLATRD	LVKIGDFGLM	RALPQND DHY	VMQEHKRVPF	AWCAPESLKT		360
h-Ack	SKRFIHRDLA	ARNLLLATRD	LVKIGDFGLM	RALPQND DHY	VMQEHKRVPF	AWCAPESLKT		304
m-Ack	SKRFIHRDLA	ARNLLLATRD	LVKIGDFGLM	RALPQND DHY	VMQEHKRVPF	AWCAPESLKT		304
h-Ack*	RTFSHASDTW	MFGVTLWEMF	TYGQEPWIGL	NGSQILHKID	KEGERLPRPE	DCPQDIYNVM		420
h-Ack	RTFSHASDTW	MFGVTLWEMF	TYGQEPWIGL	NGSQILHKID	KEGERLPRPE	DCPQDIYNVM		364
m-Ack	RTFSHASDTW	MFGVTLWEMF	TYGQEPWIGL	NGSQILHKID	KEGERLPRPE	DCPQDIYNVM		364
h-Ack*	VQCWAHKPED	RPTFVALRDF	LLEAQPTDMR	ALQDFEEDPK	LHIQMNDVIT	VIEGRAENYV		480
h-Ack	VQCWAHKPED	RPTFVALRDF	LLEAQPTDMR	ALQDFEEDPK	LHIQMNDVIT	VIEGRAENYV		424
m-Ack	VQCWAHKPED	RPTFVALRDF	LLEAQPTDMR	ALQDFEEDPK	LHIQMNDVIT	VIEGRAENYV		424
h-Ack*	WRGQNTRTL C	VGPFPRNVVT	SVAGLSAQDI	SQPLQNSFIH	TGHGDS DPRH	CWGF PDRIDE		540
h-Ack	WRGQNTRTL C	VGPFPRNVVT	SVAGLSAQDI	SQPLQNSFIH	TGHGDS DPRH	CWGF PDRIDE		484
m-Ack	WRGQNTRTL C	VGPFPRNVVT	SVAGLSAQDI	SQPLQNSFIH	TGHGDS DPRH	CWGF PDRIDE		484
h-Ack*	LYLGNPMDPP	DLLSVELSTS	RPPQHLGGVK	KPTYD	PVSEDDPLS	585
h-Ack	LYLGNPMDPP	DLLSVELSTS	RPPQHLGGVK	KPTYD	PVSEDDPLS	529
m-Ack	LYLGNPMDPP	DLLSVELSTS	RPTQHLGRVK	REPPRPPQP	AIFTQ	KPTYD	PVSEDDPLS	544
h-Ack*	SDFKRLGLRK	PGLPRGLWLA	KPSARVPGTK	ASRSGAEVT	LIDFGEEP VV	P...PYGPAA		642
h-Ack	SDFKRLGLRK	PGLPRGLWLA	KPSARVPGTK	ASRSGAEVT	LIDFGEEP VV	PALRPPPSL		589
m-Ack	SDFKRLGLRK	PALPRGLWLA	KPSARVPGTE	ADRSSGGEVT	LIDFGEEP VV	PTRPCAPSL		604
h-Ack	LPGAAGHGR L	LPAGRDPASE	PHAGTARPLH	PTPVVDWDAR	PLPPPPAYDD	VAQDEDDFEI		702
h-Ack*	AQLAMDACSL	L...DETPPQS	PTRALPRPLH	PTPVVDWDAR	PLPPPPAYDD	VAQDEDDFEI		647
m-Ack	AQLAMDACSL	L...DKTPPQS	PTRALPRPLH	PTPVVDWDAR	PLPPPPAYDD	VAQDEDDFEV		662
h-Ack*	CSINSTLVGA	GVPAGPSQGQ	TNYAFVPEQA	RPPPPLEDNL	FLPPQGGGK P	PSSAQTAEIF		762
h-Ack	CSINSTLVGA	GVPAGPSQGQ	TNYAFVPEQA	RPPPPLEDNL	FLPPQGGGK P	PSSAQTAEIF		707
m-Ack	CSINSTLVGA	GLPAGPSQGE	TNYAFVPEQA	QMPPALEDNL	FLPPQGGGK P	PSSVQTAEIF		722
h-Ack*	QALQQECMRQ	LQAP.GSPAP	SFSPGGD DDKP	QVPPRVPIPP	RPTRPHVQLS	PAPPGEETS		821
h-Ack	QALQQECMRQ	LQAP.GSPAP	SFSPGGD DDKP	QVPPRVPIPP	RPTRPHVQLS	PAPPGEETS		766
m-Ack	QALQQECMRQ	LQVPTGQLTP	SPTPGGD DDKP	QVPPRVPIPP	RPTRPRVELS	PAPSGEETS		782
h-Ack*	QWPGPASPPR	VPPREPLSPQ	GSRTPSPLVP	PGSSPLPPRL	SSSPGKTMPT	TQSFASDPKY		881
h-Ack	QWPGPASPPR	VPPREPLSPQ	GSRTPSPLVP	PGSSPLPPRL	SSSPGKTMPT	TQSFASDPKY		826
m-Ack	RWPGPASPPR	VPPREPLSPQ	GSRTPSPLVP	PGSSPLPHRL	SSSPGKTMPT	TQSFASDPKY		842
h-Ack*	ATPQVIQAPG	.AGGPCILPI	VRDGKKVSS T	HYLLPERPS	YLERYQRFLR	EAQSPPEPTP		940
h-Ack	ATPQVIQAPG	.AGGPCILPI	VRDGKKVSS T	HYLLPERPS	YLERYQRFLR	EAQSPPEPTP		885
m-Ack	ATPQVIQAPG	PRAGPCILPI	VRDGRKVVSS T	HYLLPERPP	YLERYQRFLR	EAQSPPEPAA		902
h-Ack*	LPVPLLLPPP	STPAPAAPTA	TVRPMQAAL	DPKANFSTNN	SNPGARPPP	RATARLPQRG		1000
h-Ack	LPVPLLLPPP	STPAPAAPTA	TVRPMQAAL	DPKANFSTNN	SNPGARPPP	RATARLPQRG		945
m-Ack	LPVPLLLPPP	STPAPAAPTA	TVRPMQAAP	DPKANFSTNN	SNPGARPPSL	RAAARLPQRG		962
h-Ack*	CPGDGPEAGR	PADKIQM..A	MVHGVTTEEC	QAALQCHGWS	VQRA CPVSEG	GAALRAGSAA		1058
h-Ack	CPGDGPEAGR	PADKIQM..A	MVHGVTTEEC	QAALQCHGWS	VQRAAQYLKV	EQLFGLGLRP		1003
m-Ack	CPGDGQEAA R	PADKVQMLQA	MVHGVTTEEC	QAALQSHSWS	VQRAAQYLKV	EQLFGLGLRP		1022
h-Ack*	QRECHKVLEM	FDWNLEQAGC	HLLGSWGPAH	HKR	1091			
h-Ack	RGECHKVLEM	FDWNLEQAGC	HLLGSWGPAH	HKR	1036			
m-Ack	RVECHKVLEM	FDWNLEQAGC	HLLGSCGPAH	HKR	1055			

PTK

CRIB SH3

RHR

C