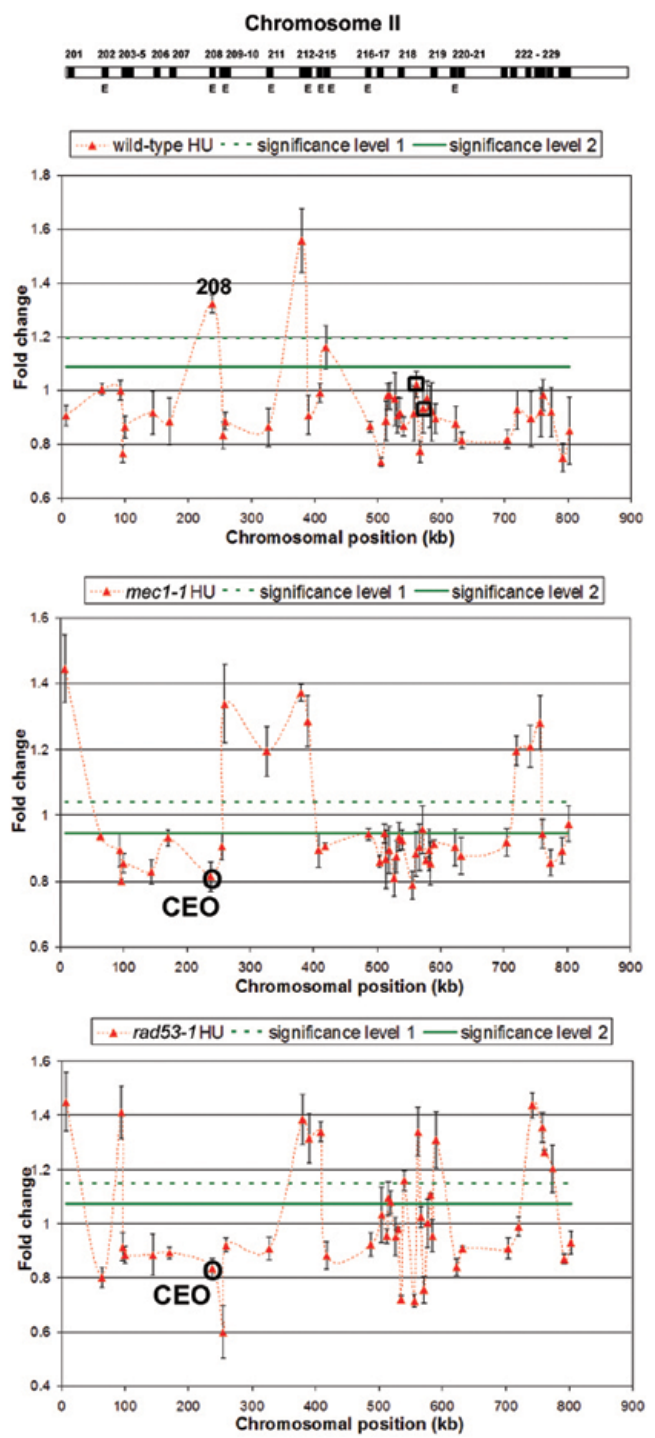
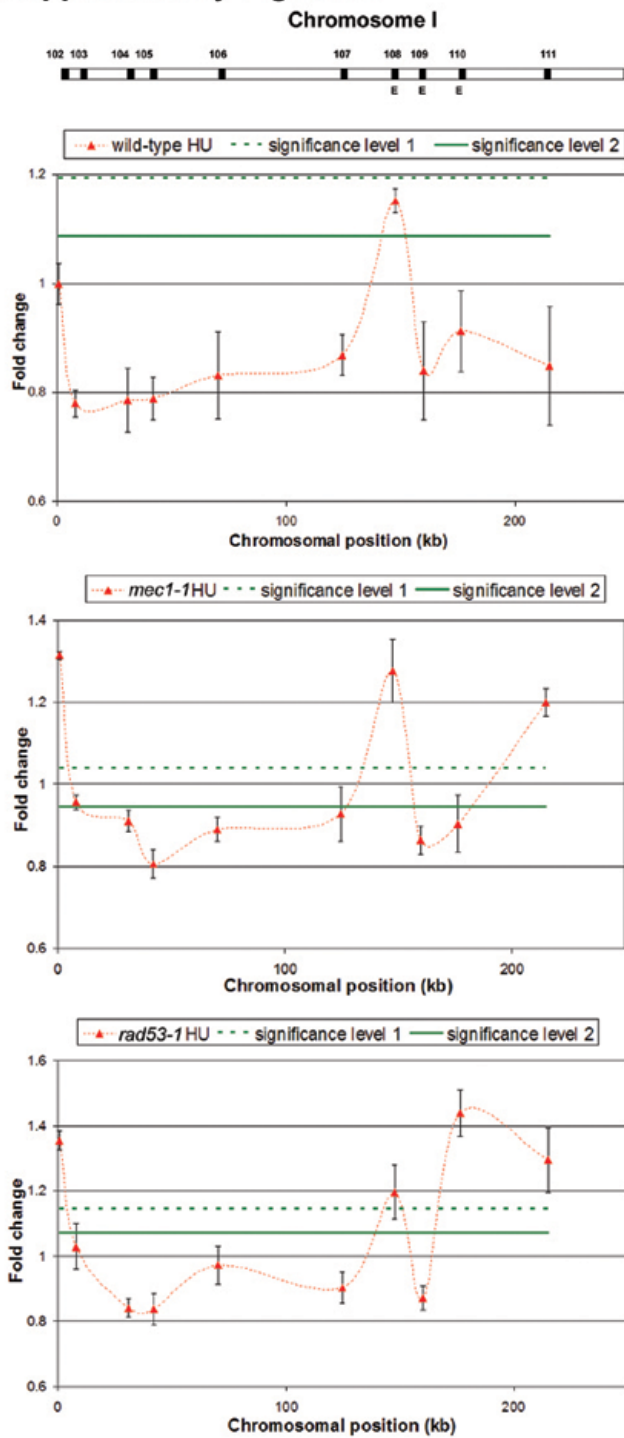
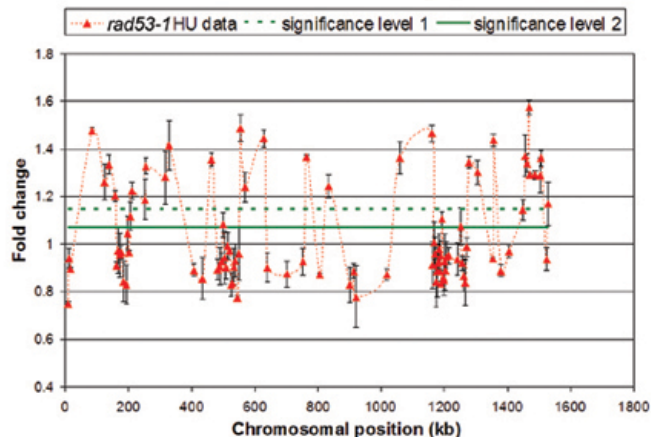
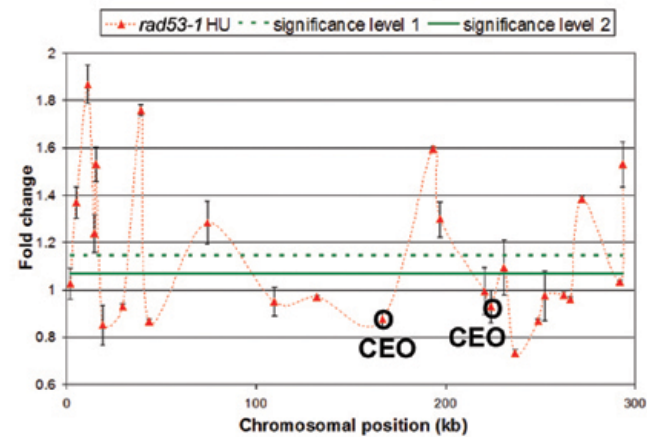
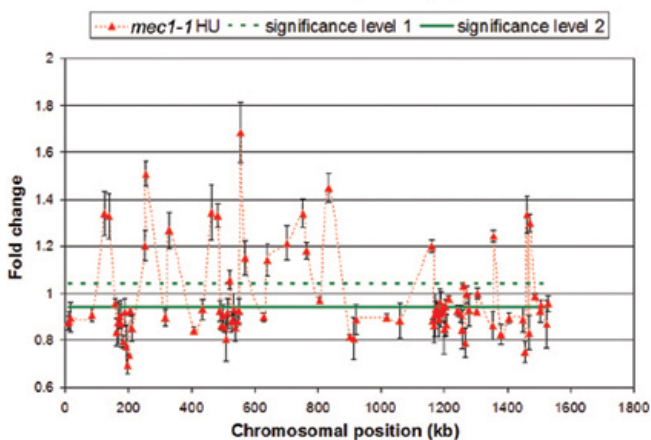
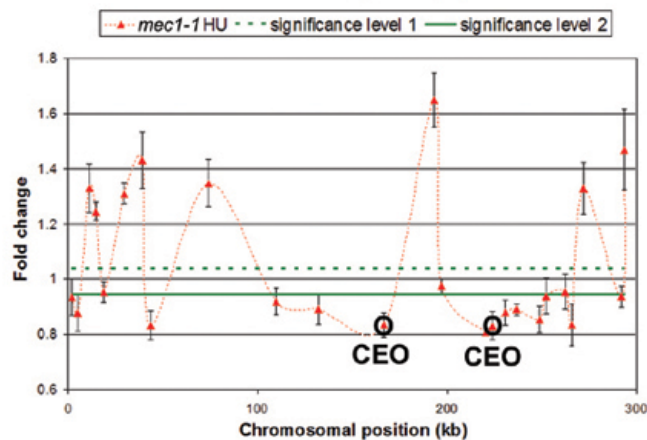
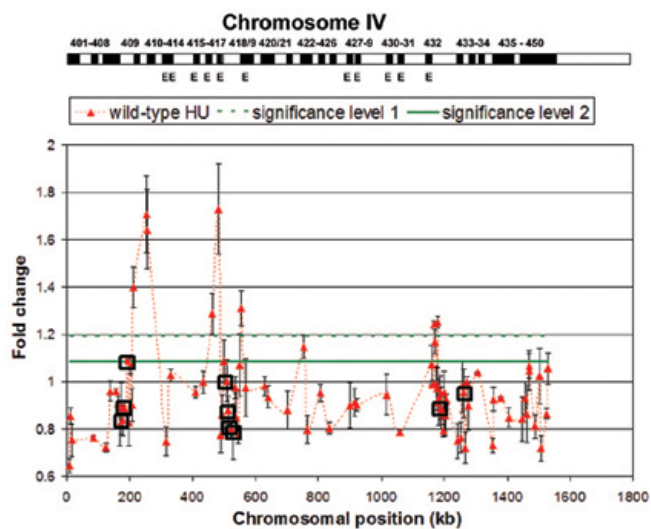
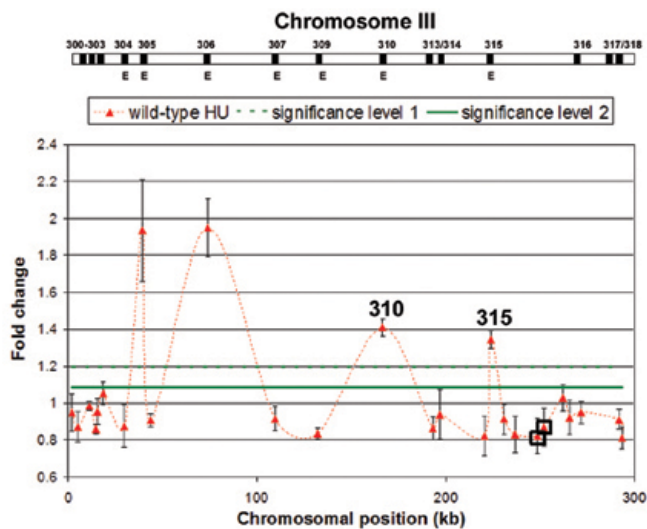


Supplementary Figure S3. Replication origin activation profiles for all chromosomes (I – XVI) in wild-type, *mec1-1* and *rad53-1* cells. Chromosomes I-XVI are shown as cartoons at the top of each figure. The distribution of replication origins on the chromosome is indicated by solid black bars. The letter E indicates early-firing origins (Raghuraman *et al*, 2001). Each point on the graph represents the average of three independent experiments. Standard error is indicated by error bars. Significance levels 1 and 2 correspond to one standard deviation and one half of a standard deviation above background, respectively. Negative controls used for normalization are marked by a black square in wild-type profiles. CEOs are indicated by their ARS number in wild-type profiles and are circled in *mec1-1* and/or *rad53-1* profiles.

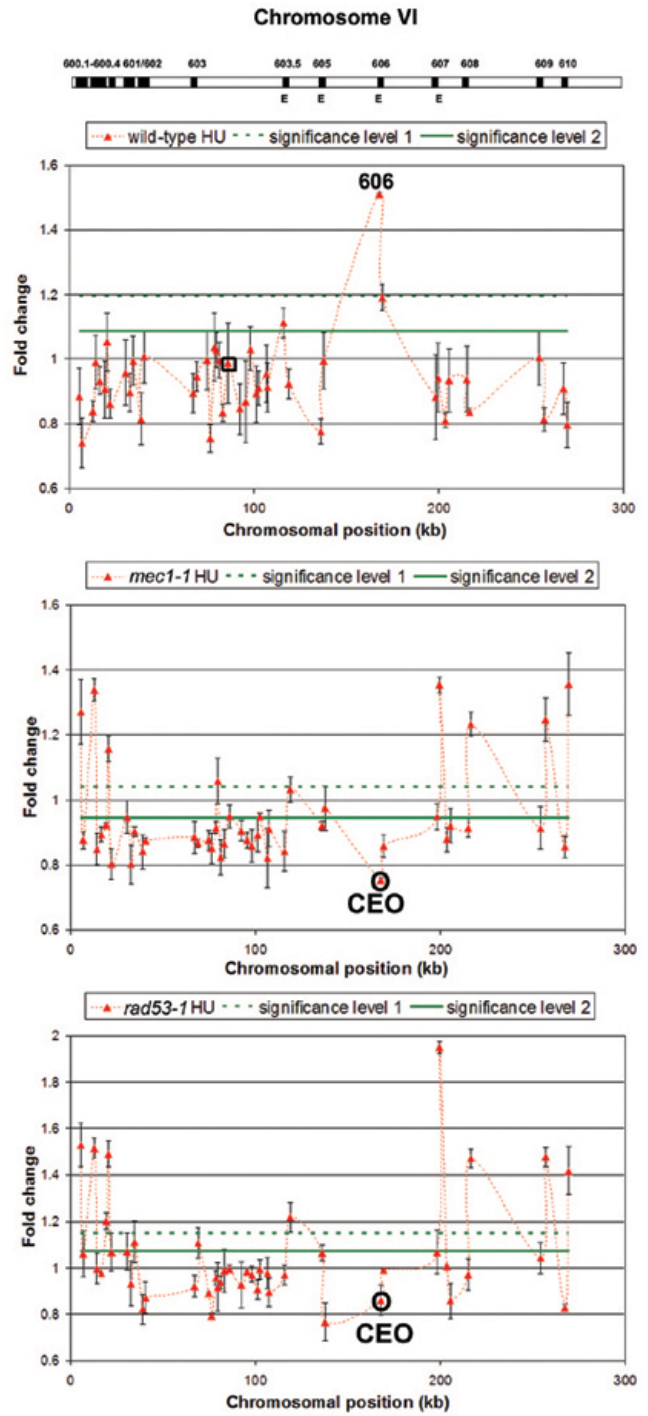
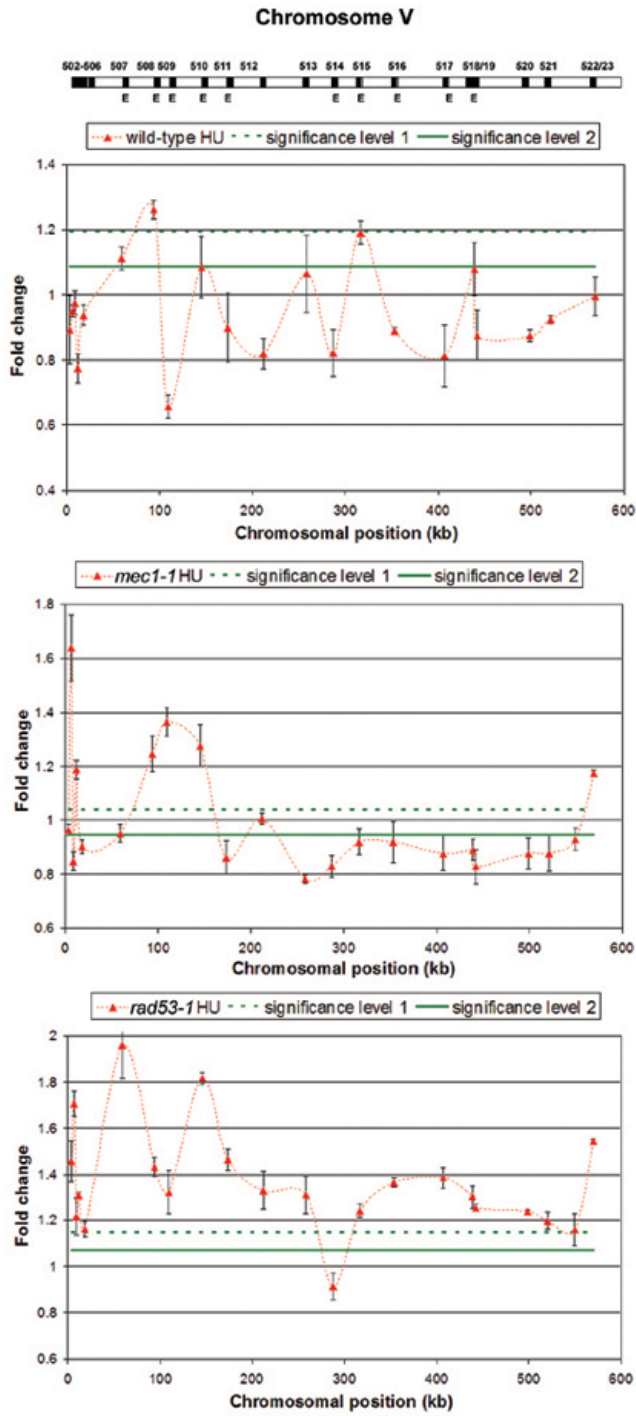
Supplementary Figure S3



Supplementary Figure S3 (continued from previous page)

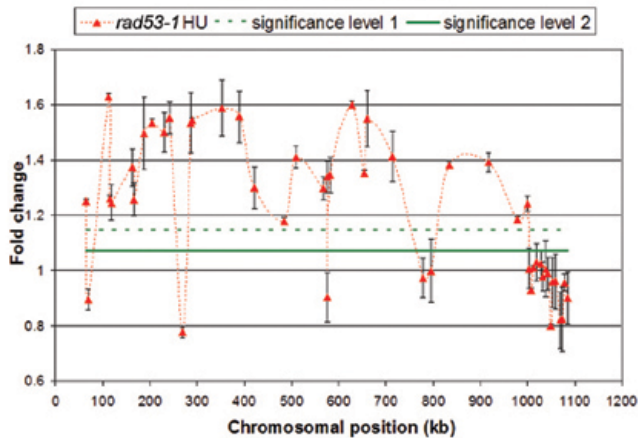
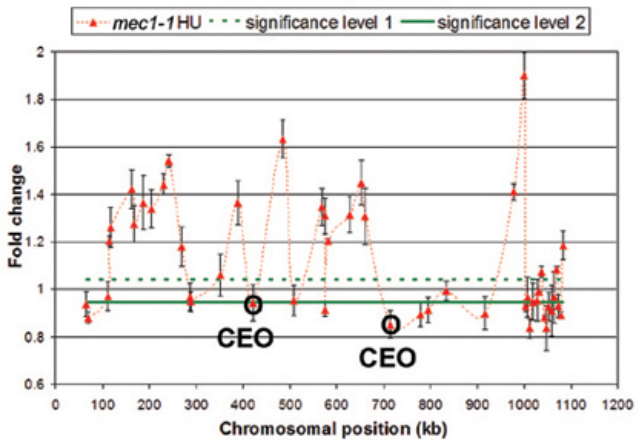
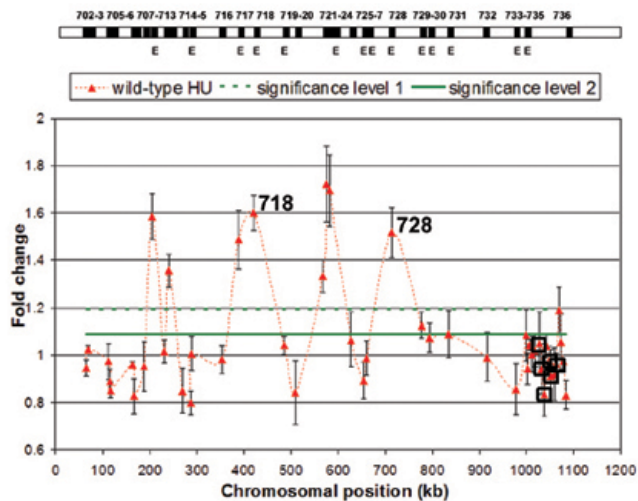


Supplementary Figure S3 (continued from previous page)

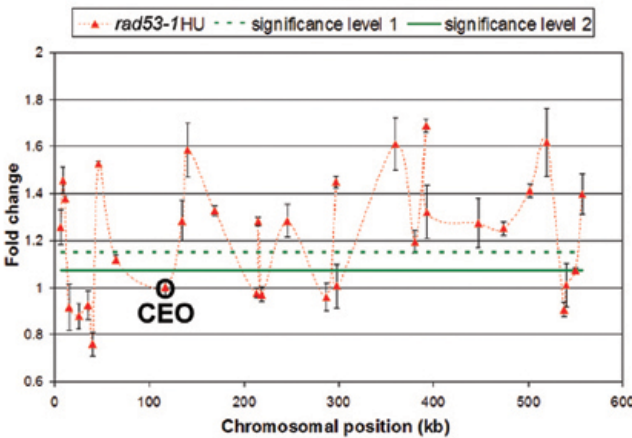
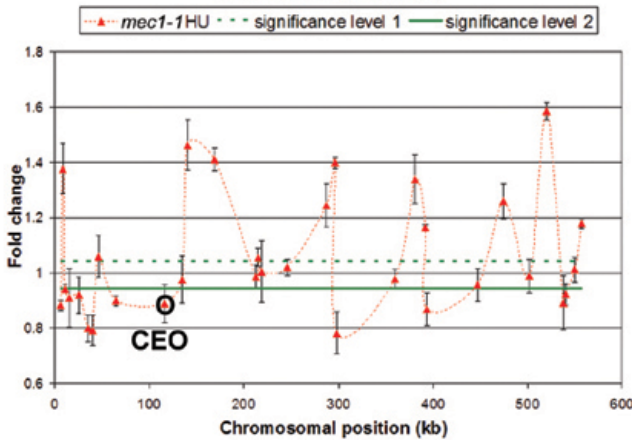
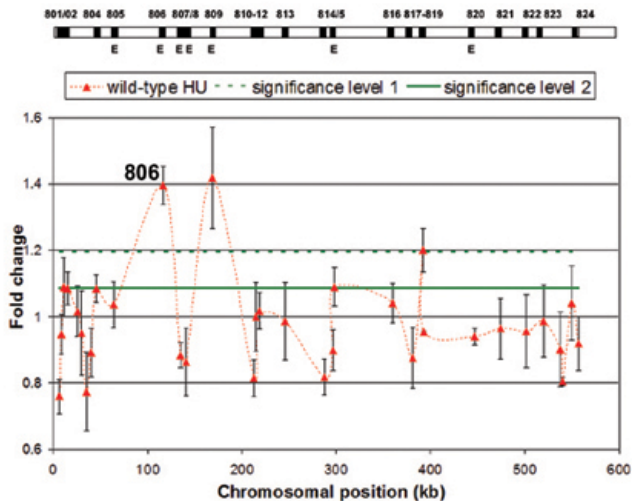


Supplementary Figure S3 (continued from previous page)

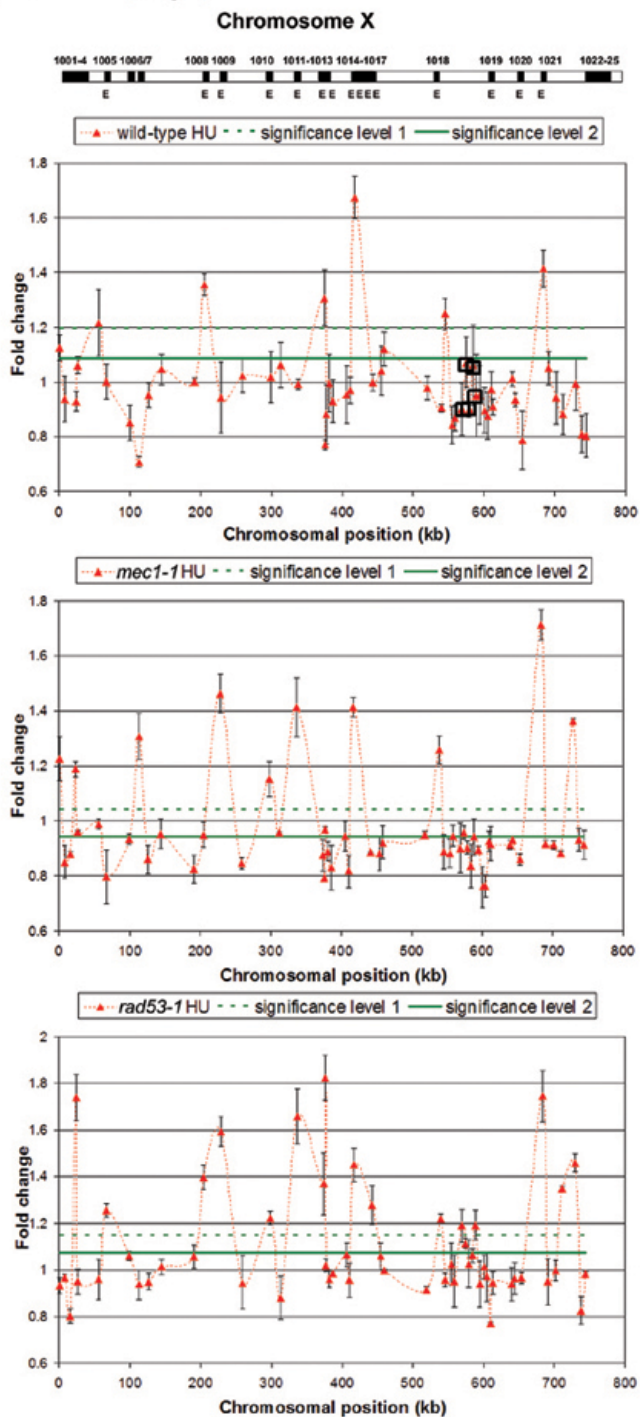
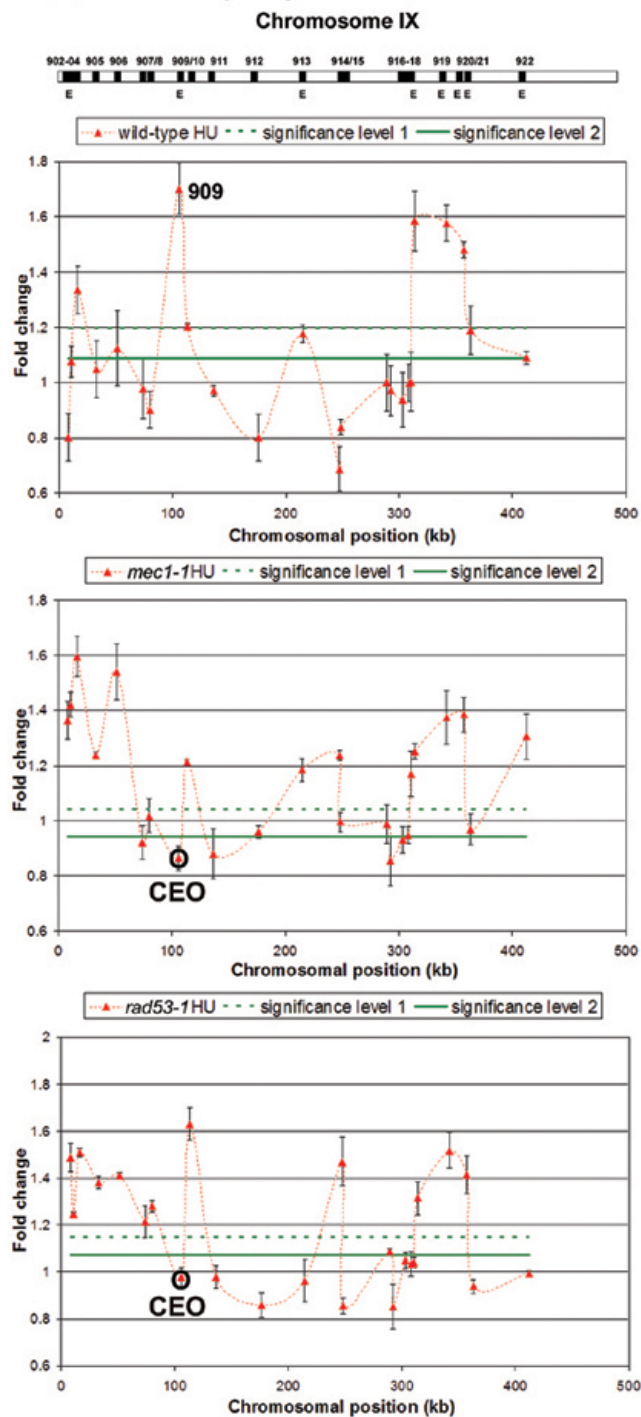
Chromosome VII



Chromosome VIII

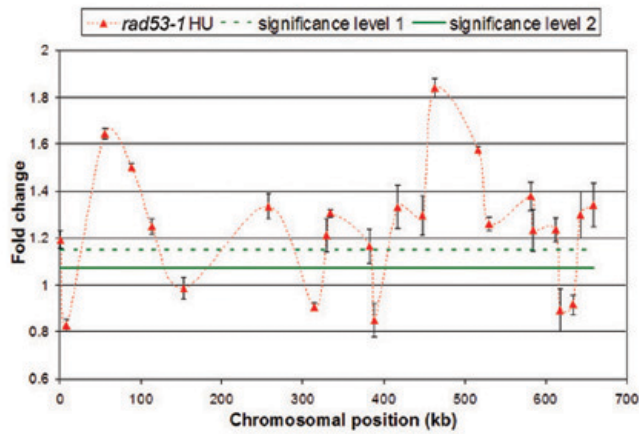
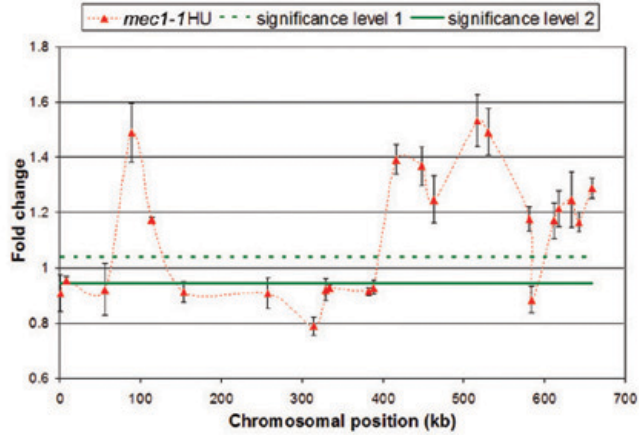
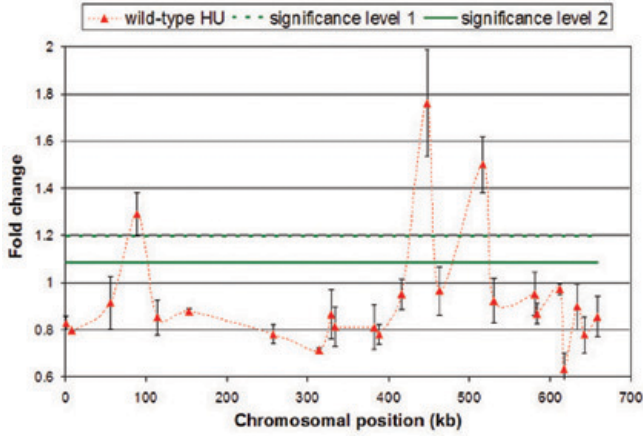


Supplementary Figure S3 (continued from previous page)

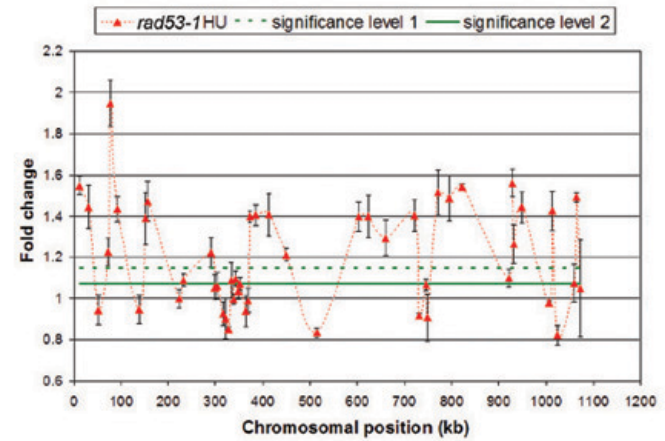
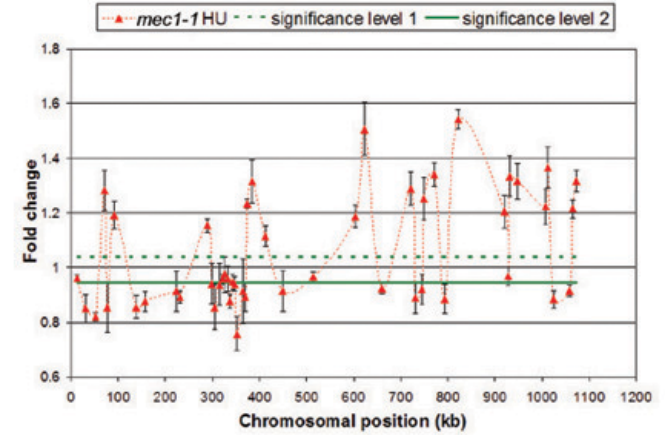
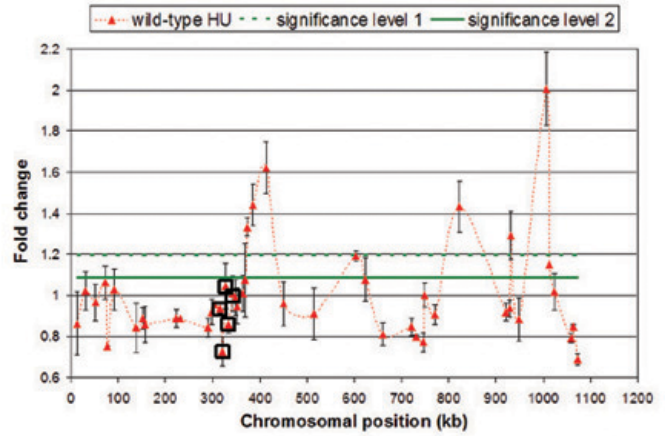


Supplementary Figure S3 (continued from previous page)

Chromosome XI

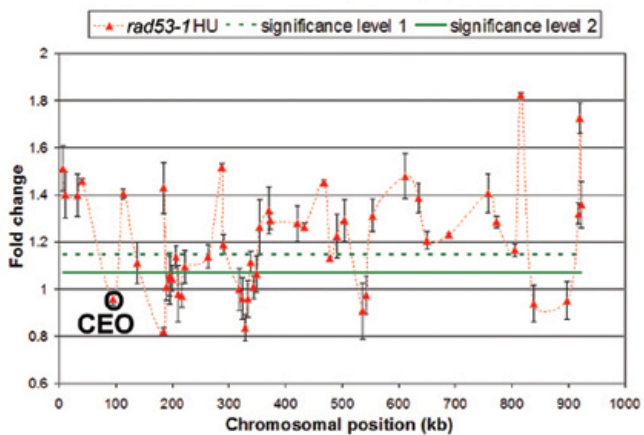
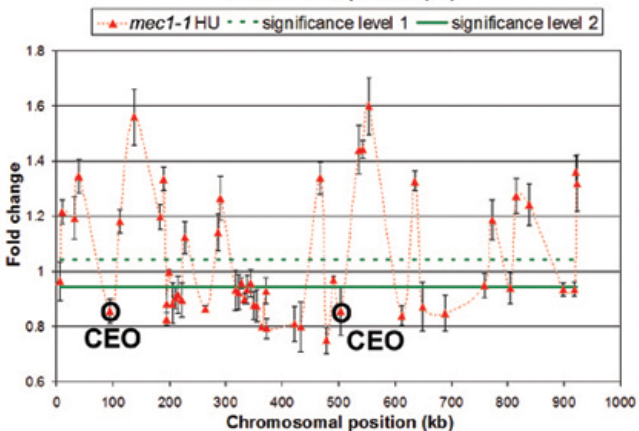
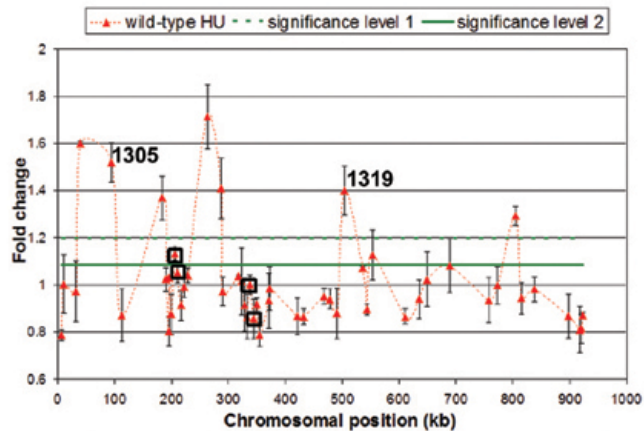


Chromosome XII

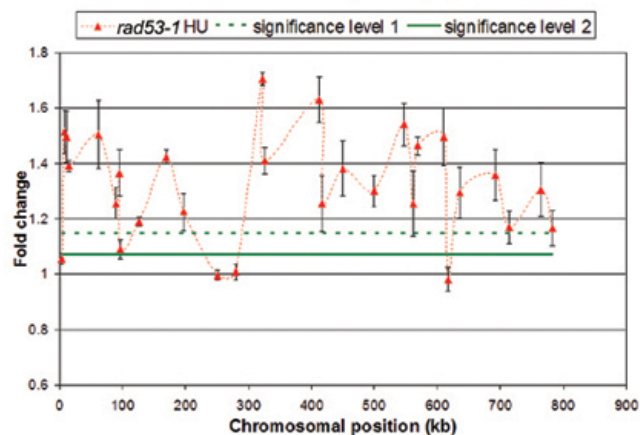
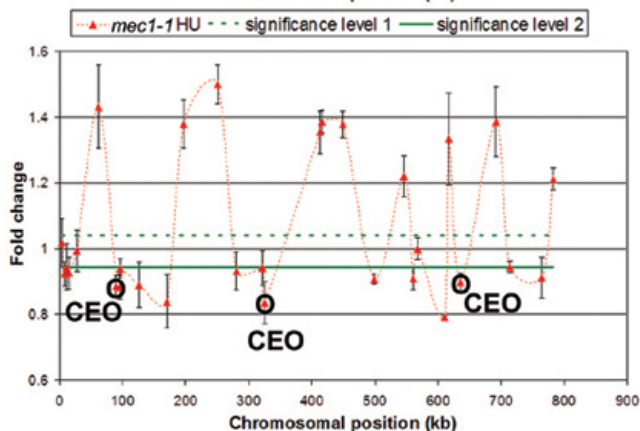
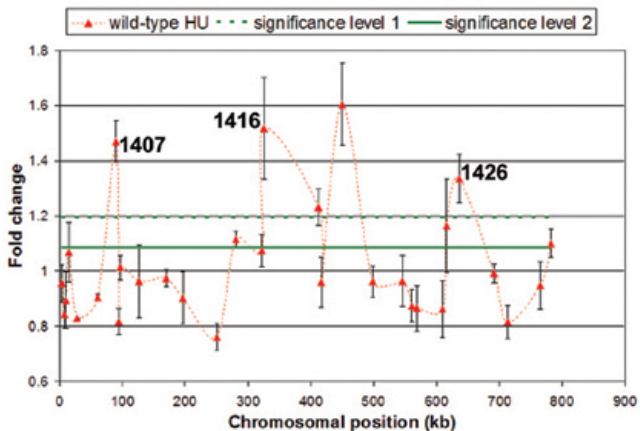


Supplementary Figure S3 (continued from previous page)

Chromosome XIII



Chromosome XIV



Supplementary Figure S3 (continued from previous page)

