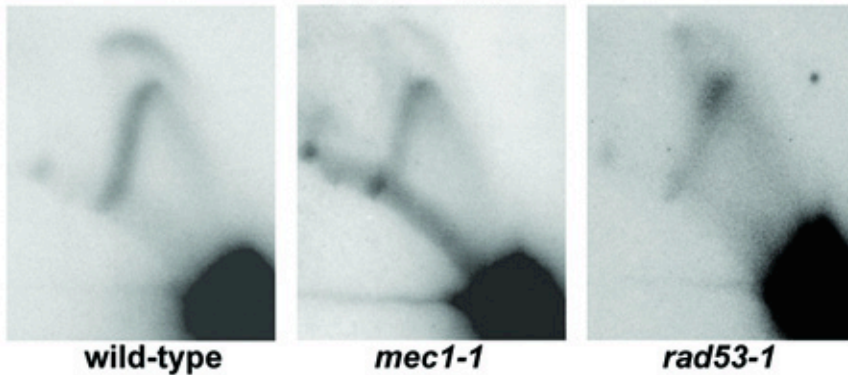
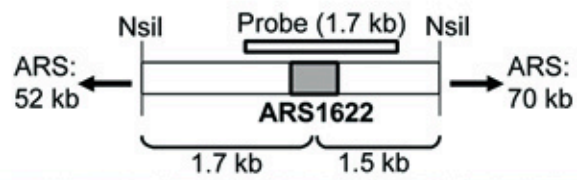


Supplementary Figure S5. Differential regulation of replication origins by Mec1 and Rad53. 2-D gel electrophoresis was carried out on genomic DNA isolated from wild-type, *mec1-1sml1Δ* and *rad53-1* cells arrested in 0.2 M HU for 80 min. The cartoons above the 2-D gels indicate the restriction sites and probes for each origin. Replication of restriction fragments encompassing the Rad53-dependent CEO, *ARS1622* (A), and the late-firing origin, *ARS1413* (B), which is only active in *mec1-1* mutants (Sup. Table III), is shown.

Supplementary Figure S5

A



B

