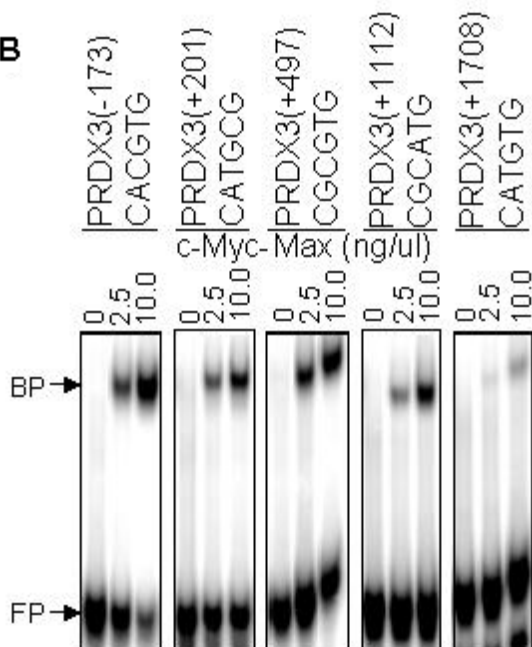


**A**

5' | 10 | 20 | 30 | 3'  
 gggaaagtaggaaaaeCAGGTGtcaettgcccagaat PRDX3(-173)  
 eeeteegggaaggttccATGCGGctbtgaggaagaacggcc PRDX3(+201)  
 etcccaateccaeeteCCGCTGtcttctgctgctgtttc PRDX3(+497)  
 etgtgttgccttaagCGCATGgagtttctgattttt PRDX3(+1112)  
 ctcaaggetgctgCATGTGgaagaaagagcttgcacaa PRDX3(+1708)

**B****C**