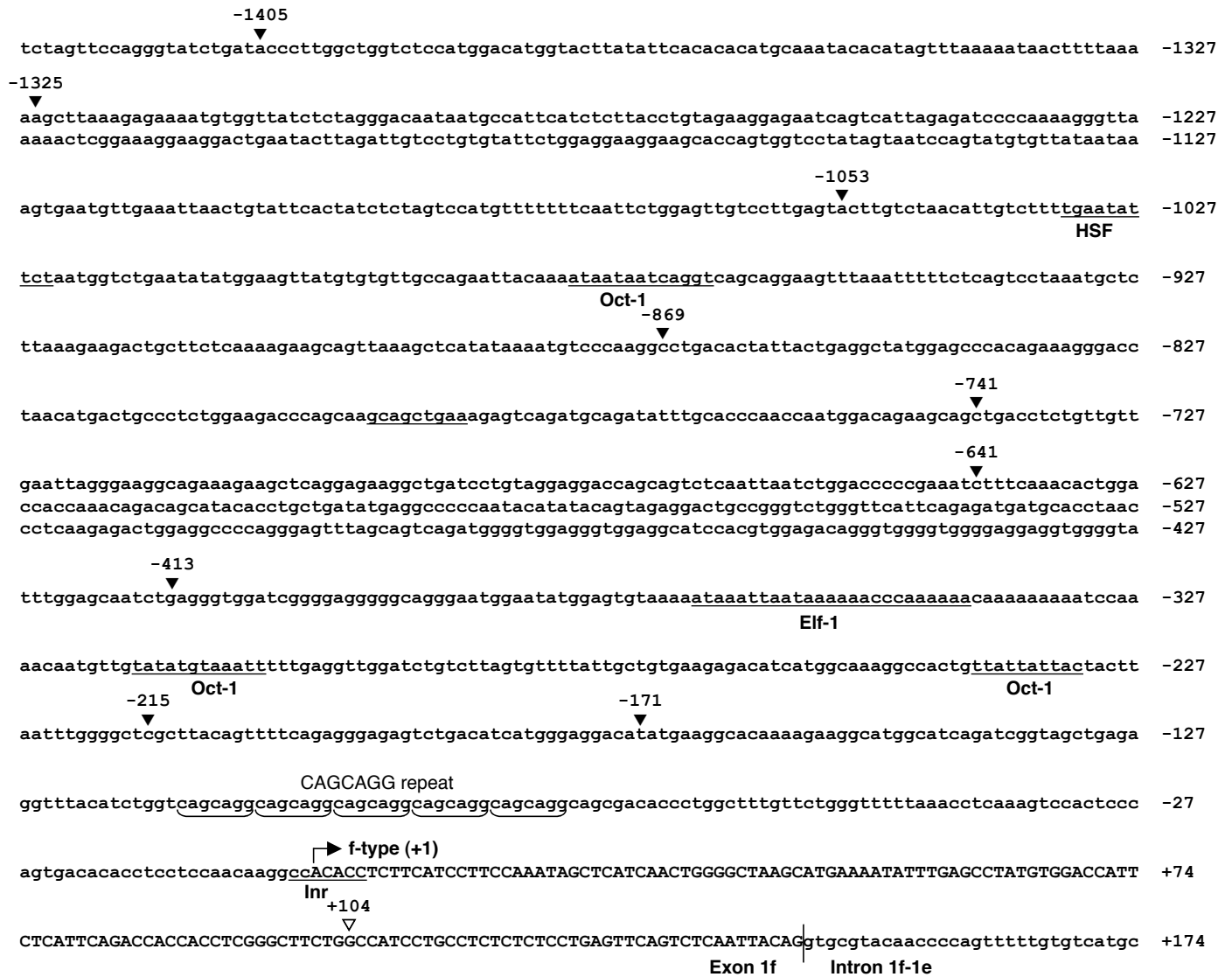
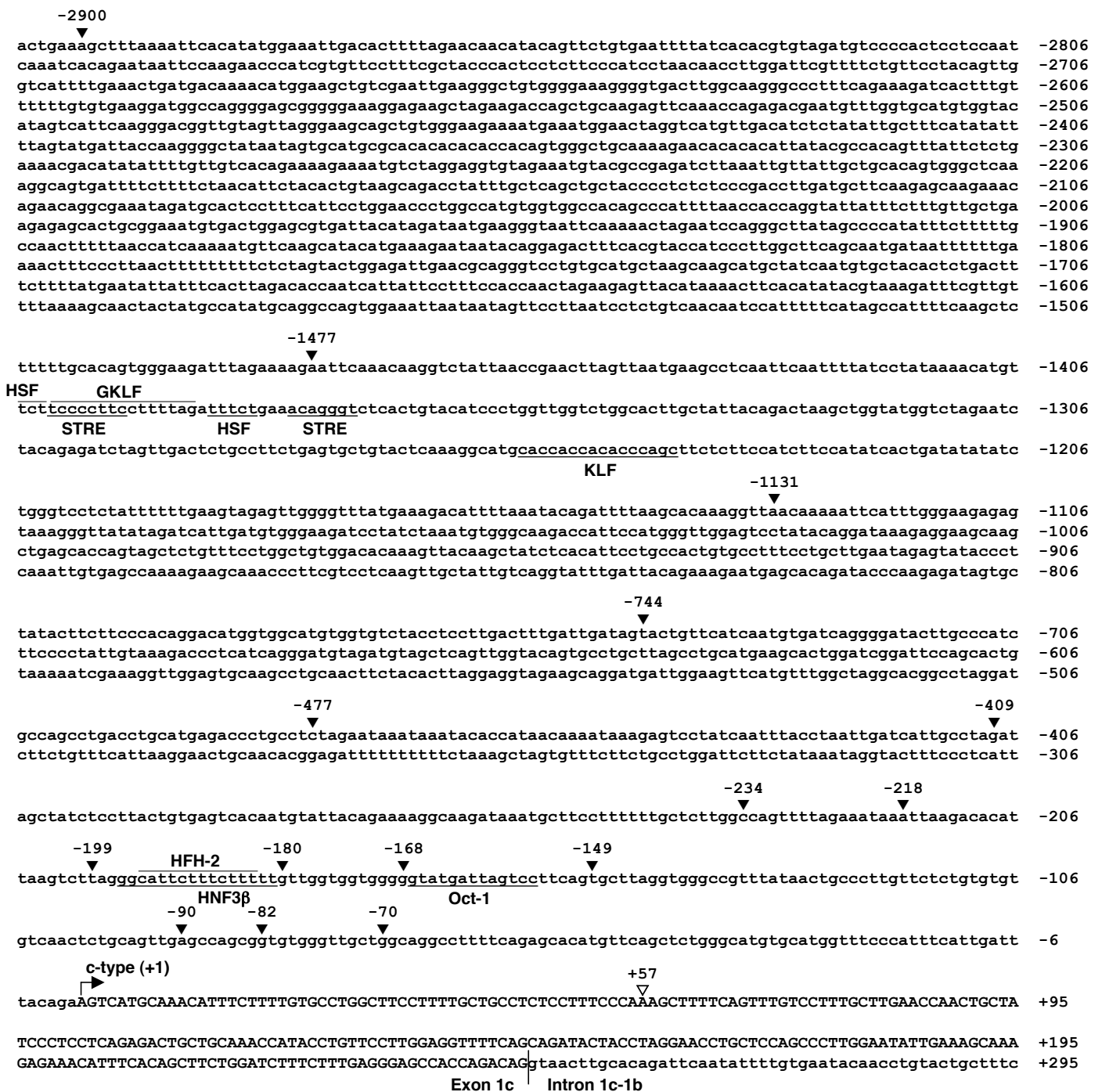


A



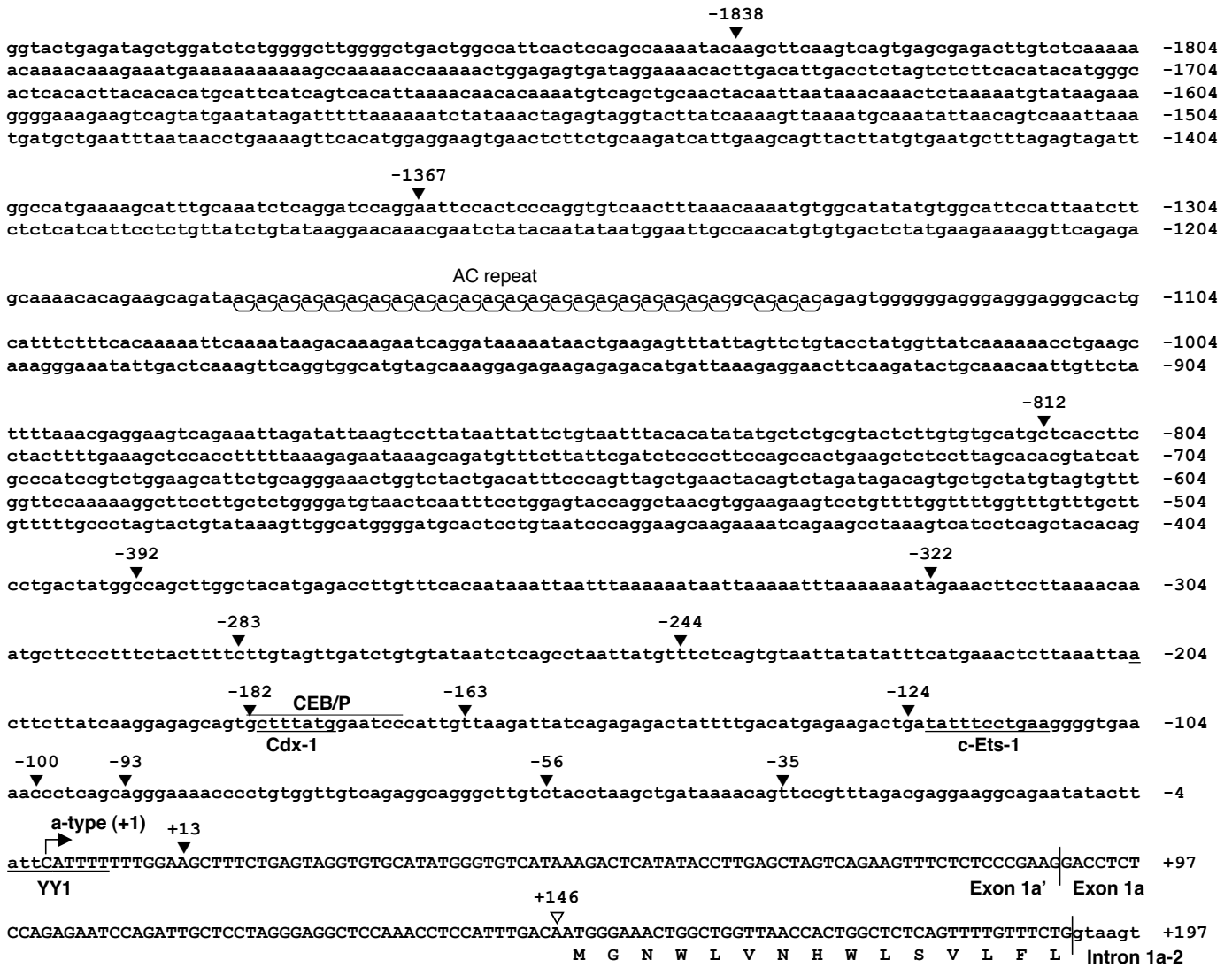
Online Figure IA. Arakawa et al.

B



Online Figure IB. Arakawa et al.

C



Online Figure IC. Arakawa et al.

Legends for online data

Fig. I. Promoter sequences of the mouse NOX1 gene. The 5'-flanking sequences of the three NOX1 gene exons, 1f (*A*), 1c (*B*) and 1a' (*C*). The putative transcriptional start sites and nucleotide sequences of the exons are indicated by arrows and uppercase, respectively. The predicted binding sites for the major transcription factors are lined above or below. The 5'- and 3'- ends of the promoter constructs used for the reporter assay are denoted by closed and opened triangles, respectively.

Online Tables

Table 1. Primers and conditions applied for RT-PCR

Detection	Primer Pair	Sequence (5'-3')	Annealing (°C)	PCR cycles
f-type	exf/e-R	CAGTCTCAATTACAGGGATCTTCATGG	58	48
	ex1/2-R	TTCAGCCCCAACCCAGGAAACCAGAAAC		
c-type	ex1c-F	AACCATACCTGTTCTTGAGG	61	41
	ex1/2-R	TTCAGCCCCAACCCAGGAAACCAGAAAC		
a-type	ex1a'-F	CTAGTCAGAAGTTTCTCTCCCGAAGGAC	61	41
	ex4-R	CATATATGCCACCAGCTTATGGAAG		
common	ex1a-F	GAGGCTCCAAACCTCCATTTGACA	61	41
	ex4-R	CATATATGCCACCAGCTTATGGAAG		
MHC	MHC-F	ATGAGAAGAAAGCCAAGAGTC	60	34
	MHC-R	CTCATCTAGCTCCCGCTGCAGC		
h-caldesmon	h-CaD-F	GAGGCTGTGCTGATGGTATTGGAA	60	34
	h-CaD-R	CTTCTCATCTTTGATCTCTTCCTTTCTG		
l-caldesmon	l-CaD-F	GCAAGAGGAAGAATCCTTGGGACA	60	34
	l-CaD-R	GAATTCTCCATTCTGCGCCTTCAC		
GAPDH	GAPDH-F	TCAACGGGAAACCCATCACCAT	60	28
	GAPDH-R	GAACACGGAAGCCATGCCAGT		

MHC, myosin heavy chain; GAPDH, glyceraldehyde-3-phosphate dehydrogenase.

Table 2. Exon/intron junction sequences of the mouse NOX1 gene

Exon	5'-donor site	Intron (approx. size)	3'-acceptor site	Exon
1f	TCTCAATTACAG	gtgcgtac..... (36 k)tgaccag	GGATCTTCATGG	1e
1e	GGAGTGAAAGAG	gtgggttt..... (42 k)acccaag	GTTTAAGTTCTT	1d
1d	ATACGACTGAAG	gtaggtga..... (28 k)gacttaag	GCCTGCTTCCCC	1b
1c	GCCACCAGACAG	gtaacttg..... (25 k)gacttaag	GCCTGCTTCCCC	1b
1b	GAGGCTCAAGAG	gtaagtct..... (2.8k)tcccgaag	GACCTCTCAGA	1a