

ELECTRONIC APPENDIX

This is the Electronic Appendix to the article

Markedly different gene expression in wheat grown with organic
or inorganic sources of nitrogen

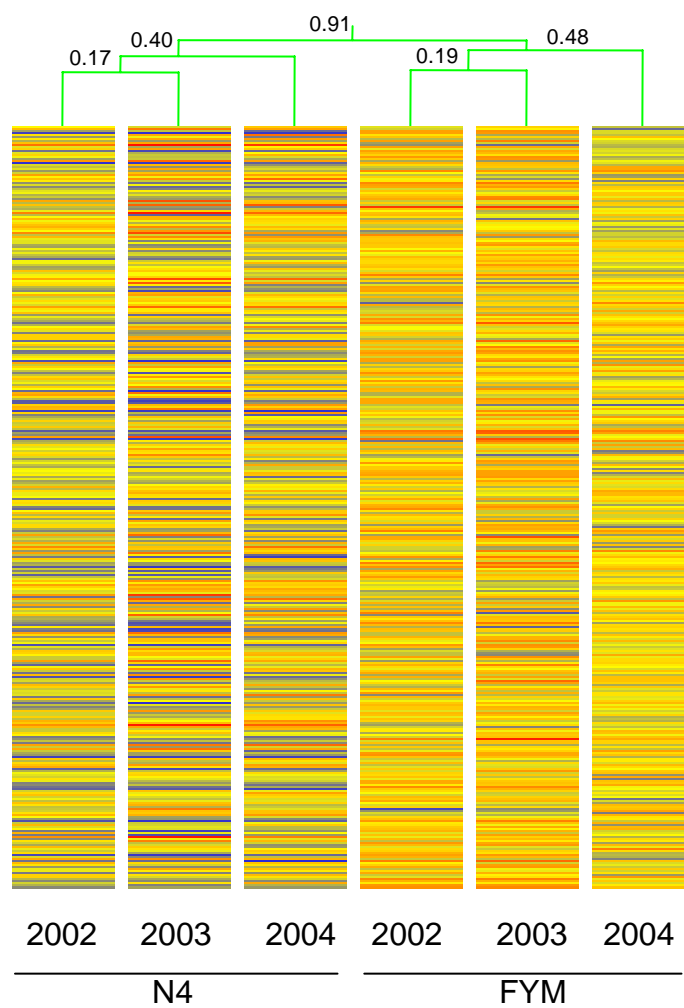
by

Chungui Lu, Malcolm J. Hawkesford, Peter B. Barraclough, Paul R. Poulton,
Ian D. Wilson, Gary L. Barker, and Keith J. Edwards

Proc. R. Soc. B ([doi:10.1098/rspb.2005.3161](https://doi.org/10.1098/rspb.2005.3161))

Electronic appendices are refereed with the text; however, no attempt is made
to impose a uniform editorial style on the electronic appendices.

Supporting Figure 1. Hierarchical clustering analysis of ca. 10,000 genes from wheat grain from plants treated with either organic (FYM) or inorganic (N4) fertilizer during 2002-2004. In each case the expression profiles were derived from at least 12 replicates. Values for similarity are indicated.



Supporting Table 1. Full list of sequences that together constitute the K-mean derived clusters contained with Fig 2C. The first group (2ci) consisting of 474 sequences were all more highly expressed in the developing wheat endosperm following FYM treatment. The second group (2cii) consisting of 190 sequences showed highest expression under N0 and N1 conditions. The third group (2ciii) consisting of 20 genes showed relatively low expression in the low nitrogen treatments and uniformly high expression under the high treatments.

List of sequences induced by FYM: Figure 2ci

accession no.	Gene ID	Annotation
AL823095	B10_p133_plate_11	1-aminocyclopropane-1-carboxylate oxidase [Phyllostachys edulis]
AL818695	D05_1125_plate_12	2,3-bisphosphoglycerate-independent phosphoglycerate mutase
AL825263	E06_p335_plate_7	24.8 kDa class II endochitinase-antifreeze protein precursor [Secale cereale]
AL813730	D08_e29_plate_9	2-isopropylmalate synthase A (Alpha-isopropylmalate synthase A)
AL821886	C03_n130_plate_41	6-phosphofructo-2-kinase (EC 2.7.1.105) / fructose-2, 6-bisphosphate 2-phosphatase (EC 3.1.3.46) - spinach
AL818751	D02_1125_plate_6	A3 Protein
AL820607	C12_o232_plate_15	acyl carrier family protein /ACP family protein [Arabidopsis thaliana]
AL818114	B11_j223_plate_12	alanine aminotransferase 2 (GPT) (Glutamic--pyruvic transaminase 2) (Glutamic--alanine transaminase 2)
AL812725	B01_e310_plate_8	alanine aminotransferase 2 (GPT) (Glutamic--pyruvic transaminase 2) (Glutamic--alanine transaminase 2)
AL815627	H03_j223_plate_7	alcohol dehydrogenase ADH1 [Lycopersicon esculentum]
AL814414	F03_h116_plate_10	aldehyde dehydrogenase [Oryza sativa]
AL825292	H12_p335_plate_7	aldehyde dehydrogenase family 3, subfamily A2 [Rattus norvegicus]
AL811288	F07_d37_plate_3	alpha/beta-gliadin precursor (Prolamin)
AL810715	A02_d26_plate_3	alpha/beta-gliadin, wheat gene for storage protein
AL808756	F01_a22_plate_7	alpha-amylase type A isozyme precursor (1,4-alpha-D-glucanohydrolase) (AMY1) (Low pI alpha-amylase)
AL815161	A04_h116_plate_9	alpha-amylase/trypsin inhibitor CM3 precursor
AL811497	C10_d37_plate_9	alpha-gliadin [Triticum aestivum]
AL814387	B07_h116_plate_10	alpha-gliadin [Triticum aestivum]
AL811497	C10_d37_plate_9	alpha-gliadin [Triticum aestivum]
AL814494	F12_h116_plate_11	alpha-gliadin [Triticum aestivum]
AL814428	H01_h116_plate_10	alpha-gliadin [Triticum aestivum]
AL811222	F11_d37_plate_2	AmiB [Triticum aestivum]
AL811704	B12_d15_plate_15	amino acid permease AAP4 [Vicia faba var. minor]
AL827303	E04_p638_plate_4	amino acid transporter family protein [Arabidopsis thaliana]
AL825256	D08_p335_plate_7	aminoacylase, putative [Arabidopsis thaliana]
AL813527	E01_e29_plate_10	aminotransferase family [Arabidopsis thaliana]
AL827059	H12_p638_plate_7	ammonium transporter [Oryza sativa]
AL825698	H04_p234_plate_14	ammonium transporter 1-1 [Oryza sativa]
AL818310	A07_j223_plate_15	ankyrin-like protein-like protein [Sorghum bicolor]
AL813421	C08_e29_plate_7	argininosuccinate synthase (EC 6.3.4.5) - Arabidopsis thaliana
AL812271	G01_e310_plate_1	aspartate aminotransferase, cytoplasmic (Transaminase A)
AL813524	D09_e29_plate_10	A2g5740/F3N11.19 [Arabidopsis thaliana]
AL826641	G05_p537_plate_5	A5g44560 [Arabidopsis thaliana]
AL821745	B01_n130_plate_28	auxin response transcription factor(ARF6) [Arabidopsis thaliana]
AL826642	G06_p537_plate_5	bacterial-induced peroxidase precursor [Gossypium hirsutum]
AL813084	E12_e411_plate_10	Beta-amylase (1,4-alpha-D-glucan maltohydrolase)
AL822039	D05_n130_plate_15	beta-expansin [Oryza sativa]
AL812788	F01_e310_plate_9	CCCH-type zinc finger protein -related [Arabidopsis thaliana]
AL818624	F12_1125_plate_10	CCR4-associated factor -related [Arabidopsis thaliana]
AL808636	G04_a22_plate_4	ceramide glucosyltransferase [Gossypium arboreum]
AL822683	A11_p335_plate_1	chitinase 3 [Triticum aestivum]
AL817964	B02_j223_plate_10	cinnamoyl-CoA reductase family [Arabidopsis thaliana]
AL815684	F11_j223_plate_8	COP9 complex subunit 6 CSN6, putative [Arabidopsis thaliana]
AL825346	G09_p335_plate_8	CRS2-associated factor 2 [Zea mays]
AL808761	F06_a22_plate_7	cystatin [Triticum aestivum]
AL811650	D08_d15_plate_11	cytochrome P450 [Triticum aestivum]
AL821748	B01_n130_plate_38	cytosolic glyceraldehyde-3-phosphate dehydrogenase [Triticum aestivum].
AL817921	E01_j223_plate_9	DHHC-type zinc finger domain-containing protein [Arabidopsis thaliana]
AL818506	F10_1125_plate_5	diacylglycerol kinase (EC 2.7.1.107) ATDGK1 - Arabidopsis thaliana
AL811690	A01_d15_plate_15	dihydroflavonol 4-reductase [Lophopyrum ponticum x Triticum aestivum]
AL818277	F04_j223_plate_14	dihydroflavonol 5-acetyltransferase [Arabidopsis thaliana]
AL808265	D08_a22_plate_14	diphosphonucleotide phosphatase 1 [Lupinus luteus]
AL820228	G06_n130_plate_39	DNA topoisomerase II inhibitor [Triticum aestivum]
AL818632	A06_1125_plate_11	DNA-binding EMBP-1 protein
AL822313	F05_p234_plate_22	DnaJ protein homolog - kidney bean (fragment)
AL808807	D01_a22_plate_8	dnaK-type molecular chaperone HSP70 - barley
AL809062	F08_a11_plate_10	dTDP-glucose 4-6-dehydratase homolog D18 - Arabidopsis thaliana
AL813417	C03_e29_plate_7	EST B1045D11.20 [Oryza sativa (japonica cultivar-group)]
AL815839	C10_j122_plate_10	EST B1153F04.12 [Oryza sativa (japonica cultivar-group)]
AL812565	F05_e310_plate_5	EST B1153F04.12 [Oryza sativa (japonica cultivar-group)]
AL822363	E12_p234_plate_23	EST B1156H12.22 [Oryza sativa (japonica cultivar-group)]
AL822608	G02_p335_plate_10	EST F22C12.25 [Arabidopsis thaliana]
AL812659	A01_e310_plate_7	EST OJ000126_13.11 [Oryza sativa (japonica cultivar-group)]
AL826635	F08_p537_plate_5	EST OJ1111_G12.9 [Oryza sativa (japonica cultivar-group)]
AL816233	H11_j122_plate_1	EST OSJNBa0014F07.4 [Oryza sativa (japonica cultivar-group)]
AL828671	D11_p739_plate_7	EST OSJNBa0018M05.2 [Oryza sativa (japonica cultivar-group)]
AL814857	C11_h116_plate_4	EST OSJNBa0019K04.16 [Oryza sativa (japonica cultivar-group)]
AL813818	F11_e512_plate_10	EST OSJNBa0019K04.9 [Oryza sativa (japonica cultivar-group)]
AL808242	C08_e22_plate_15	EST OSJNBa0029H02.25 [Oryza sativa (japonica cultivar-group)]
AL826373	B04_p537_plate_1	EST OSJNBa0034E24.8 [Oryza sativa (japonica cultivar-group)]
AL813107	C01_e411_plate_11	EST OSJNBa0038F22.11 [Oryza sativa (japonica cultivar-group)]
AL820387	H10_n130_plate_20	EST OSJNBa0039G19.15 [Oryza sativa (japonica cultivar-group)]
AL825495	D12_p335_plate_16	EST OSJNBa0060N03.11 [Oryza sativa (japonica cultivar-group)]
AL812794	A07_e411_plate_3	EST OSJNBa0060N03.13 [Oryza sativa (japonica cultivar-group)]
AL818904	H06_1125_plate_4	EST OSJNBa007113.13 [Oryza sativa (japonica cultivar-group)]
AL815256	D05_j223_plate_2	EST OSJNBa0072K14.6 [Oryza sativa (japonica cultivar-group)]
AL825422	A07_p335_plate_15	EST OSJNBa0077M12.11 [Oryza sativa (japonica cultivar-group)]
AL809294	C01_a11_plate_16	EST OSJNBa0084A10.6 [Oryza sativa (japonica cultivar-group)]
AL825345	G06_p335_plate_8	EST OSJNBa0084K11.7 [Oryza sativa (japonica cultivar-group)]
AL828469	C07_p739_plate_1	EST OSJNBa0086P08.10 [Oryza sativa (japonica cultivar-group)]
AL821905	C05_n130_plate_15	EST OSJNBa0015N08.9 [Oryza sativa (japonica cultivar-group)]
AL821732	A12_n130_plate_15	EST OSJNBa0017I01.8 [Oryza sativa (japonica cultivar-group)]
AL813276	C08_e411_plate_15	EST OSJNBa0020J19.5 [Oryza sativa (japonica cultivar-group)]
AL821766	B03_n130_plate_15	EST OSJNBa0021A09.5 [Oryza sativa (japonica cultivar-group)]
AL827192	B01_p638_plate_6	EST OSJNBa0062H02.6 [Oryza sativa (japonica cultivar-group)]
AL817122	E06_j324_plate_3	EST OSJNBa0068N06.18 [Oryza sativa (japonica cultivar-group)]
AL813291	E05_e411_plate_15	EST OSJNBa0079B01.6 [Oryza sativa (japonica cultivar-group)]
AL820249	G08_n130_plate_41	EST OSJNBa0086G13.7 [Oryza sativa (japonica cultivar-group)]
AL827421	F09_p638_plate_2	EST OSJNBa0118P14.14 [Oryza sativa (japonica cultivar-group)]
AL827231	E06_p638_plate_5	EST P0019D06.11 [Oryza sativa (japonica cultivar-group)]
AL817052	B09_j324_plate_2	EST P0406G08.7 [Oryza sativa (japonica cultivar-group)]
AL811402	H02_d37_plate_9	EST P0431G06.3 [Oryza sativa (japonica cultivar-group)]
AL811521	B05_p638_plate_2	EST P0443D08.1 [Oryza sativa (japonica cultivar-group)]
AL827458	C12_j324_plate_2	EST P0446G04.14 [Oryza sativa (japonica cultivar-group)]
AL817063	F03_n129_plate_12	EST P0470A12.35 [Oryza sativa (japonica cultivar-group)]
AL819608	F09_1125_plate_11	EST P0481E12.28 [Oryza sativa (japonica cultivar-group)]
AL818661	C12_e29_plate_2	EST P0503E05.29 [Oryza sativa (japonica cultivar-group)]
AL810422	E03_p335_plate_16	EST P0529E05.24 [Oryza sativa (japonica cultivar-group)]
AL825497	H07_j122_plate_13	EST P0686C03.10 [Oryza sativa (japonica cultivar-group)]
AL816060	H10_d37_plate_1	EST P0686E09.7 [Oryza sativa (japonica cultivar-group)]
AL811172	G11_j226_plate_9	EST P0699H05.17 [Oryza sativa (japonica cultivar-group)]
AL817684	B04_j223_plate_15	ESTs AU068856(C50756),AU077979(C61370) correspond to a region of eukaryotic cap-binding protein [imported] - Arabidopsis thaliana
AL809092	A12_a11_plate_12	expressed protein [Arabidopsis thaliana]
AL811401	C04_h116_plate_13	expressed protein [Arabidopsis thaliana]
AL827537	A07_p638_plate_1	expressed protein [Arabidopsis thaliana]
AL817898	B05_j223_plate_9	expressed protein [Arabidopsis thaliana]
AL814066	B06_e512_plate_1	expressed protein [Arabidopsis thaliana]
AL824834	B12_e234_plate_4	expressed protein [Arabidopsis thaliana]
AL808802	C03_a22_plate_8	expressed protein [Arabidopsis thaliana]
AL812745	D03_e310_plate_8	expressed protein [Arabidopsis thaliana]

AL811361	D05_d37_plate_5	expressed protein [Arabidopsis thaliana]
AL819245	E08_n129_plate_17	expressed protein [Arabidopsis thaliana]
AL810134	F08_d15_plate_6	expressed protein [Arabidopsis thaliana]
AL814048	G02_e512_plate_15	expressed protein [Arabidopsis thaliana]
AL818289	G05_j223_plate_14	expressed protein [Arabidopsis thaliana]
AL822253	G06_p234_plate_21	expressed protein [Arabidopsis thaliana]
AL818363	G09_j223_plate_15	expressed protein [Arabidopsis thaliana]
AL818295	G12_j223_plate_14	expressed protein [Arabidopsis thaliana]
AL814918	B08_h116_plate_5	F1F0-ATPase inhibitor protein [Oryza sativa (japonica cultivar-group)]
AL821423	B06_p133_plate_9	farnesylated protein 1 [Hordeum vulgare subsp. vulgare]
AL812649	G08_e310_plate_6	fatty acid alpha-oxidase [Oryza sativa]
AL827345	H08_p638_plate_3	fiber protein FB15 [Gossypium barbadense]
AL814385	B04_h116_plate_10	gamma-gliadin [Triticum aestivum]
AL814434	H08_h116_plate_10	gamma-gliadin [Triticum aestivum]
AL815127	D06_h116_plate_8	gamma-gliadin [Triticum aestivum]
AL814629	G02_h116_plate_13	gamma-gliadin [Triticum aestivum]
AL812759	E10_e310_plate_8	gamma-gliadin [Triticum urartu]
AL814533	C06_h116_plate_12	gamma-gliadin B precursor
AL820072	F04_n130_plate_28	GDSL-motif lipase/hydrolase-like protein [Oryza sativa (japonica cultivar-group)]
AL813789	B04_e512_plate_10	gene iojap protein - maize
AL827942	G08_p739_plate_3	gene_id:MPE11.12-unknown protein [Arabidopsis thaliana]
AL815141	F09_h116_plate_8	gene_id:MYN8.3-pir[TH0289]-similar to unknown protein [Arabidopsis thaliana]
AL825719	B09_p234_plate_15	GLN1Oryza glutamine synthetase root isozyme glutamate--ammonia ligase [Oryza sativa (japonica cultivar-group)]
AL814758	F11_h116_plate_2	Glucose-6-phosphate isomerase, cytosolic (Phosphoglucose isomerase) (PGI) (Phosphohexose isomerase) (PHI)
AL825153	H01_p335_plate_5	glutamine-dependent asparagine synthetase 1 [Hordeum vulgare subsp vulgare]
AL827161	E03_p638_plate_6	glutaredoxin [Populus tremula x Populus tremuloides]
AL820106	F07_n130_plate_20	glutathione transferase [Triticum aestivum]
AL827212	G06_p638_plate_5	glutathione-S-transferase Cla47 [Triticum aestivum]
AL813261	C06_e310_plate_4	glutenin high molecular weight chain 1B-y9 precursor - wheat
AL812662	A04_e310_plate_7	glutenin high molecular weight chain Dc5 - wheat
AL812040	A08_e310_plate_10	glutenin subunit group 5 type IIIlow-molecular-weight [Triticum aestivum]
AL814638	H04_h116_plate_13	glutenin y-subunit [Thinopyrum ponticum x Triticum aestivum]
AL814486	F04_h116_plate_11	glutenin, low molecular weight subunit ptdud1 precursor
AL821999	D01_n130_plate_1	glycine-rich protein [Arabidopsis thaliana]
AL809176	F01_a11_plate_13	glycine-rich RNA-binding protein-like [Oryza sativa (japonica cultivar-group)]
AL823233	C10_p133_plate_1	glycosyltransferase family 2 [Arabidopsis thaliana]
AL814604	D04_h116_plate_13	grain softness protein 1a, 15K (clone TSF69) - wheat
AL812268	F09_e310_plate_1	Guanine nucleotide-binding protein beta subunit-like protein (GPB-LR) (RWD)
AL825852	B10_p234_plate_17	high-affinity phosphate transporter PT1 [Triticum aestivum]
AL815651	B10_j223_plate_8	histone H1 WH1A.2 [Triticum aestivum]
AL826759	G12_p537_plate_8	Histone H2A
AL811244	B01_d37_plate_3	Histone H2B.2
AL813565	A10_e29_plate_11	Histone H3
AL810143	G11_d15_plate_6	Histone H3
AL825991	E06_p234_plate_19	histone H4 (TH091) - wheat
AL808706	H02_a22_plate_6	hypersensitive-induced reaction protein 2 [Hordeum vulgare subsp vulgare]
AL813786	A10_e512_plate_10	hypothetical protein [Arabidopsis thaliana]
AL813361	C11_e29_plate_6	hypothetical protein [Arabidopsis thaliana]
AL818732	B01_i125_plate_6	hypothetical protein [Oryza sativa (japonica cultivar-group)]
AL809015	B06_a22_plate_13	hypothetical protein [Oryza sativa (japonica cultivar-group)]
AL811056	D01_d26_plate_17	hypothetical protein [Oryza sativa (japonica cultivar-group)]
AL829536	H06_p840_plate_1	Hypothetical protein [Oryza sativa (japonica cultivar-group)]
AL819778	A08_n129_plate_5	hypothetical protein [Oryza sativa]
AL809540	F02_a11_plate_4	hypothetical protein [Oryza sativa]
AL815046	C06_h116_plate_7	hypothetical protein [Plasmodium falciparum 3D7]
AL821421	B04_p133_plate_9	hypothetical protein [Plasmodium yoelii yoelii]
AL816745	G10_j226_plate_2	hypothetical protein At2g42780 [imported] - Arabidopsis thaliana
AL815135	E10_h116_plate_8	hypothetical protein F22D16.11 - Arabidopsis thaliana
AL812995	E11_e411_plate_8	hypothetical protein T2211.11 - Arabidopsis thaliana
AL822001	D01_n130_plate_21	inner envelope membrane protein precursor, non-green plastid - wild cabbage
AL816748	H05_j226_plate_2	KH domain protein [Arabidopsis thaliana]
AL814909	A08_h116_plate_5	L-ascorbate oxidase (EC 1.10.3.3) - rice (fragment)
AL826404	F08_p537_plate_1	lateral organ boundaries (LOB) domain protein 37 (LBD37)
AL812734	C01_e310_plate_8	legumin-like protein [Zea mays]
AL827134	H10_p638_plate_6	lipase (class 3) family [Arabidopsis thaliana]
AL818340	E01_j223_plate_15	lipid body-associated major protein L3 - maize (fragment)
AL814453	H07_h116_plate_10	long-chain-fatty-acid-CoA ligase (acyl-CoA synthetase) family
AL814388	B09_h116_plate_10	low molecular weight glutenin subunit [Triticum turgidum subsp. durum]
AL814379	A09_h116_plate_10	low-molecular-weight glutenin subunit group 4 type II [Triticum aestivum]
AL821331	E06_p133_plate_7	low-temperature-specific protein TACR7 - wheat (fragment)
AL810279	D10_d15_plate_9	MADS-box transcription factor AG [Agapanthus praecox]
AL819876	D02_n129_plate_6	MAP kinase homolog [Triticum aestivum]
AL808683	C02_a22_plate_6	MCM3-associated protein - related [Arabidopsis thaliana]
AL819761	G09_n129_plate_4	membrane import protein-like [Arabidopsis thaliana]
AL818048	D03_j223_plate_11	methyltransferase-related protein [Arabidopsis thaliana]
AL811144	E05_d37_plate_1	microtubule-binding protein TANGLED1 [Zea mays]
AL819641	C07_n129_plate_2	mitochondrial aldehyde dehydrogenase [Secale cereale]
AL818479	B09_i125_plate_5	Moco containing protein [Oryza sativa (japonica cultivar-group)]
AL816989	B05_j324_plate_1	nicotianamine aminotransferase [Hordeum vulgare subsp. vulgare]
AL826672	B12_p537_plate_6	Nicotianamine synthase 1 (HvNAS1)
AL827652	D05_p638_plate_13	nitrate reductase [NADH] (NR)
AL825459	F10_p335_plate_15	nitrate reductase [NADH] (NR)
AL825261	E03_p335_plate_7	nitrate transporter NRT1-5 [Oryza sativa (japonica cultivar-group)]
AL827725	D05_p638_plate_15	nitrogen fixation sensor protein fixL, two-component, [Mesorhizobium loti MAFF303099]
AL808543	A01_a22_plate_11	no hits
AL814109	A01_e512_plate_3	no hits
AL821629	A02_n130_plate_15	no hits
AL815875	A03_j122_plate_11	no hits
AL827342	A03_p638_plate_4	no hits
AL816439	A04_j122_plate_5	no hits
AL814716	A05_h116_plate_2	no hits
AL814584	A09_h116_plate_13	no hits
AL819723	A09_n129_plate_4	no hits
AL811015	A10_d26_plate_16	no hits
AL816008	A10_j122_plate_13	no hits
AL815300	A10_j223_plate_3	no hits
AL809326	A12_a11_plate_17	no hits
AL812975	B01_e411_plate_8	no hits
AL808309	B02_a22_plate_15	no hits
AL813194	B02_e411_plate_13	no hits
AL814362	B02_e512_plate_9	no hits
AL821761	B02_n130_plate_48	no hits
AL816012	B03_j122_plate_13	no hits
AL821771	B03_n130_plate_41	no hits
AL822631	B03_p335_plate_11	no hits
AL810403	B04_e29_plate_2	no hits
AL816446	B04_j122_plate_5	no hits
AL808726	B06_a22_plate_7	no hits
AL812602	B06_e310_plate_6	no hits
AL817968	B06_j223_plate_10	no hits
AL818032	B06_j223_plate_11	no hits
AL827187	B06_p638_plate_6	no hits
AL815173	B08_h116_plate_9	no hits
AL827326	B09_p638_plate_4	no hits
AL812378	B11_e310_plate_3	no hits
AL812531	B11_e310_plate_5	no hits
AL815652	B11_j223_plate_8	no hits
AL816133	B12_j122_plate_15	no hits
AL817457	B12_j324_plate_11	no hits
AL827811	C01_p739_plate_11	no hits
AL810269	C02_d15_plate_9	no hits
AL819409	C02_n129_plate_20	no hits

AL811130	C03_d37_plate_1	no hits
AL824837	C03_p234_plate_4	no hits
AL815958	C04_j122_plate_12	no hits
AL827111	C04_p638_plate_7	no hits
AL812610	C07_e310_plate_6	no hits
AL816136	C07_j122_plate_15	no hits
AL816324	C08_j122_plate_3	no hits
AL826677	C08_p537_plate_6	no hits
AL813328	C09_e411_plate_2	no hits
AL816458	C09_j122_plate_5	no hits
AL821946	C09_n130_plate_1	no hits
AL817649	C10_l226_plate_9	no hits
AL815964	D01_j122_plate_12	no hits
AL809299	D02_a11_plate_16	no hits
AL816329	D02_j122_plate_3	no hits
AL812686	D03_e310_plate_7	no hits
AL816202	D03_j122_plate_1	no hits
AL809214	D06_a11_plate_14	no hits
AL822060	D06_n130_plate_48	no hits
AL819880	D07_n129_plate_6	no hits
AL822066	D07_n130_plate_15	no hits
AL818535	D08_l125_plate_7	no hits
AL827442	D08_p638_plate_2	no hits
AL812749	D09_e310_plate_8	no hits
AL825190	D09_p335_plate_6	no hits
AL809037	D10_a22_plate_13	no hits
AL812988	D10_e411_plate_8	no hits
AL814800	D11_h116_plate_3	no hits
AL823045	D11_p133_plate_10	no hits
AL827659	D12_p638_plate_13	no hits
AL816145	E01_j122_plate_15	no hits
AL810987	E02_d26_plate_15	no hits
AL812990	E02_e411_plate_8	no hits
AL815844	E02_j122_plate_10	no hits
AL811719	E03_d15_plate_15	no hits
AL811461	E03_d37_plate_8	no hits
AL814612	E03_h116_plate_13	no hits
AL816086	E03_j122_plate_14	no hits
AL810433	E04_e29_plate_2	no hits
AL813593	E04_e29_plate_11	no hits
AL818700	E04_l125_plate_12	no hits
AL816087	E05_j122_plate_14	no hits
AL818540	E05_l125_plate_7	no hits
AL825498	E05_p335_plate_16	no hits
AL822303	E06_p234_plate_22	no hits
AL817926	E07_j223_plate_9	no hits
AL815472	E09_j223_plate_5	no hits
AL816215	E10_j122_plate_1	no hits
AL816409	E10_j122_plate_4	no hits
AL815605	E10_j223_plate_7	no hits
AL821278	E11_p133_plate_6	no hits
AL808345	E12_a22_plate_15	no hits
AL814411	E12_h116_plate_10	no hits
AL822308	E12_p234_plate_22	no hits
AL815912	F01_j122_plate_11	no hits
AL818275	F01_j223_plate_14	no hits
AL811285	F03_d37_plate_3	no hits
AL820060	F03_n130_plate_15	no hits
AL816347	F04_j122_plate_3	no hits
AL816096	F05_j122_plate_14	no hits
AL817932	F05_j223_plate_9	no hits
AL810372	F06_e29_plate_1	no hits
AL814942	F06_h116_plate_5	no hits
AL815003	F06_h116_plate_6	no hits
AL816544	F06_j122_plate_6	no hits
AL815917	F07_j122_plate_11	no hits
AL814816	F08_h116_plate_3	no hits
AL818212	F08_j223_plate_13	no hits
AL818354	F08_j223_plate_15	no hits
AL818621	F08_l125_plate_10	no hits
AL811369	F10_d37_plate_5	no hits
AL816286	F10_j122_plate_2	no hits
AL814421	F12_h116_plate_10	no hits
AL814628	F12_h116_plate_13	no hits
AL815988	G01_j122_plate_12	no hits
AL827284	G03_p638_plate_4	no hits
AL817237	G04_j324_plate_6	no hits
AL822174	G04_p234_plate_20	no hits
AL828690	G04_p739_plate_7	no hits
AL818006	G05_j223_plate_10	no hits
AL823265	G05_p133_plate_1	no hits
AL810956	G06_d26_plate_14	no hits
AL814166	G06_e512_plate_4	no hits
AL820230	G06_n130_plate_45	no hits
AL821072	G06_o232_plate_6	no hits
AL820639	G10_o232_plate_15	no hits
AL808596	G11_a22_plate_11	no hits
AL813914	G12_e512_plate_12	no hits
AL816558	G12_j122_plate_6	no hits
AL808598	H01_a22_plate_11	no hits
AL810707	H02_d26_plate_1	no hits
AL813133	H02_e411_plate_11	no hits
AL814505	H02_h116_plate_11	no hits
AL808365	H04_a22_plate_15	no hits
AL813690	H04_e29_plate_12	no hits
AL816114	H04_j122_plate_14	no hits
AL816298	H05_j122_plate_2	no hits
AL816115	H05_j122_plate_14	no hits
AL812834	H08_e411_plate_3	no hits
AL815938	H08_j122_plate_11	no hits
AL816168	H08_j122_plate_15	no hits
AL809009	H10_a22_plate_12	no hits
AL816435	H11_j122_plate_4	no hits
AL816061	H11_j122_plate_13	no hits
AL821154	H11_o232_plate_10	no hits
AL818373	H12_j223_plate_15	no hits
AL821162	H12_o232_plate_7	no hits
AL829903	H12_p840_plate_10	no hits
AL815009	G05_h116_plate_6	no hits
AL822228	E01_p234_plate_21	no hits
AL808808	D02_a22_plate_8	no hits
AL811619	H01_d15_plate_10	no hits
AL810475	B01_e29_plate_3	no hits
AL826684	D08_p537_plate_6	no hits
AL826096	C06_p436_plate_3	no hits
AL827977	C12_p739_plate_4	no hits
AL826611	D05_p537_plate_5	no hits
AL810609	A10_e29_plate_5	Nuclear transport factor 2 (NTF-2)
AL818052	D08_j223_plate_11	oleosin [Arabidopsis thaliana]
AL826883	F01_p638_plate_10	O-methyltransferase [Secale cereale]
AL809573	B08_a11_plate_5	OSINBa0010H02.29 [Oryza sativa (japonica cultivar-group)]
AL820049	F02_n130_plate_1	OsNAC3 protein [Oryza sativa]

AL820225 G06_n130_plate_20 p27KIP1-related-protein 1 [Lycopersicon esculentum]
 AL820151 F11_n130_plate_38 P450 [Triticum aestivum]
 AL816723 E03_j226_plate_2 pentatricopeptide (PPR) repeat-containing protein [Arabidopsis thaliana]
 AL819950 E04_n130_plate_20 peroxidase (EC 1.11.1.7) 2 precursor - wheat
 AL826434 H08_p537_plate_2 peroxidase (EC 1.11.1.7) 4 precursor - wheat
 AL825665 D02_p234_plate_14 Peroxidase 1 precursor
 AL827125 A08_p638_plate_7 peroxidoredoxin - like protein [Arabidopsis thaliana]
 AL818153 G06_j223_plate_12 PHD-finger family homeodomain protein [Oryza sativa (japonica cultivar-group)]
 AL812780 H05_e310_plate_8 phi-1 [Nicotiana tabacum]
 AL821024 F07_o232_plate_6 phosphoenolpyruvate carboxylase [Triticum aestivum]
 AL814858 C12_h116_plate_4 phosphofruktokinase beta subunit-related [Arabidopsis thaliana]
 AL816191 B11_j122_plate_1 phytoene synthase [Rubrivivax gelatinosus]
 AL822090 D09_n130_plate_38 phytoene synthase [Zea mays]
 AL816632 A10_j226_plate_1 plasma membrane associated protein [Hordeum vulgare]
 AL815097 A01_h116_plate_8 Polycomb protein EZ2 (Enhancer of zeste protein 2)
 AL823014 A12_p133_plate_10 polypyrimidine tract-binding protein [Malus x domestica]
 AL812387 C10_e310_plate_3 precursor monofunctional aspartokinase-like protein [Oryza sativa (japonica cultivar-group)]
 AL812653 H02_e310_plate_6 probable chloroplast 50S ribosomal protein L28 [imported] - Arabidopsis thaliana
 AL813566 A12_e29_plate_11 Probable methionyl-tRNA synthetase (Methionine-tRNA ligase)
 AL825157 H07_p335_plate_5 Probable nicotianamine synthase 2
 AL821213 E01_p133_plate_5 progesterone 5-beta-reductase [Oryza sativa (japonica cultivar-group)]
 AL821959 C10_n130_plate_20 protein arginine N-methyltransferase, putative [Arabidopsis thaliana]
 AL812723 A08_e310_plate_8 protein phosphatase 2A Bkappa subunit [Oryza sativa (japonica cultivar-group)]
 AL817130 F06_j324_plate_3 proteinase inhibitor - rice
 AL808880 F03_a22_plate_9 putative 26S proteasome subunit [Oryza sativa (japonica cultivar-group)]
 AL814448 B05_h116_plate_11 putative 2-oxoglutarate dehydrogenase, E1 subunit [Oryza sativa (japonica cultivar-group)]
 AL828144 C03_p436_plate_11 putative acid phosphatase [Hordeum vulgare subsp. vulgare]
 AL822169 F11_p234_plate_20 putative amino acid transporter [Oryza sativa]
 AL822279 B08_p234_plate_22 Putative anthocyanidin 3-glucosidase [Oryza sativa (japonica cultivar-group)]
 AL812676 C01_e310_plate_7 putative aspartic protease [Oryza sativa (japonica cultivar-group)]
 AL810897 E04_d26_plate_13 putative aspartic protease [Oryza sativa (japonica cultivar-group)]
 AL828526 B05_p739_plate_2 Putative ATPase I subunit from chromosome 10 chloroplast insertion [Oryza sativa (japonica cultivar-group)]
 AL812591 A04_e310_plate_6 putative auxin-induced protein [Oryza sativa (japonica cultivar-group)]
 AL814699 F12_h116_plate_1 putative calcium-dependent protein kinase [Oryza sativa (japonica cultivar-group)]
 AL815609 F02_j223_plate_7 putative casein kinase II beta subunit [Oryza sativa]
 AL811537 C10_d37_plate_10 putative cop-coated vesicle membrane protein [Oryza sativa (japonica cultivar-group)]
 AL816235 A01_j122_plate_2 Putative copia-like retrotransposon polyprotein [Oryza sativa (japonica cultivar-group)]
 AL820192 G03_n130_plate_1 putative cytochrome c oxidase subunit VIa precursor [Oryza sativa (japonica cultivar-group)]
 AL816398 D08_j122_plate_4 putative cytochrome P450 [Lolium rigidum]
 AL815566 H12_j223_plate_6 putative DAG protein [Arabidopsis thaliana]
 AL822928 E06_p335_plate_4 putative decarboxylase [Oryza sativa (japonica cultivar-group)]
 AL823258 E02_p234_plate_23 putative dermal glycoprotein precursor [Oryza sativa (japonica cultivar-group)]
 AL820247 G08_n130_plate_28 putative DNA damage repair protein [Oryza sativa (japonica cultivar-group)]
 AL812273 G03_e310_plate_1 putative E12A11 protein [Oryza sativa (japonica cultivar-group)]
 AL822886 H10_p335_plate_3 putative ERD4 protein [Oryza sativa (japonica cultivar-group)]
 AL829514 E09_p840_plate_1 putative FAS1 [Oryza sativa]
 AL828340 F11_p436_plate_16 putative flavonol 3-sulfoxyltransferase [Oryza sativa (japonica cultivar-group)]
 AL828320 B11_p436_plate_16 putative Glucan 1,3-beta-glucosidase precursor [Oryza sativa (japonica cultivar-group)]
 AL825195 E05_p335_plate_6 putative high affinity nitrate transporter [Hordeum vulgare]
 AL827329 B06_p638_plate_4 putative ionotropic glutamate receptor homolog GLR4 [Oryza sativa (japonica cultivar-group)]
 AL815158 A01_h116_plate_9 putative Mannose-P-dolichol utilization defect 1 protein homolog [Oryza sativa (japonica cultivar-group)]
 AL827236 D09_p638_plate_5 putative NADH dehydrogenase [Oryza sativa (japonica cultivar-group)]
 AL817918 D10_j223_plate_9 putative outer envelope protein [Oryza sativa (japonica cultivar-group)]
 AL826703 G05_p537_plate_6 putative peptide transporter [Oryza sativa]
 AL816643 B12_j226_plate_1 putative peptidyl-prolyl cis-trans isomerase [Oryza sativa (japonica cultivar-group)]
 AL827112 C02_p638_plate_7 putative phospholipase [Oryza sativa]
 AL825255 D07_p335_plate_7 putative PrMC3 [Oryza sativa (japonica cultivar-group)]
 AL814910 A09_h116_plate_5 putative protein disulfide isomerase [Oryza sativa (japonica cultivar-group)]
 AL815247 C02_j223_plate_2 putative protein kinase APK1A [Arabidopsis thaliana] [Oryza sativa (japonica cultivar-group)]
 AL818154 G08_j223_plate_12 Putative protein with HVA22 domain [Oryza sativa (japonica cultivar-group)]
 AL822992 D08_p335_plate_5 putative receptor protein kinase [Oryza sativa (japonica cultivar-group)]
 AL816205 D08_j122_plate_1 Putative reverse transcriptase [Oryza sativa (japonica cultivar-group)]
 AL820431 C06_o232_plate_11 putative ribonucleoside-diphosphate reductase [Oryza sativa (japonica cultivar-group)]
 AL827428 F02_p638_plate_2 putative ribosomal protein L18 [Oryza sativa (japonica cultivar-group)]
 AL809770 C01_a11_plate_9 putative ribosomal protein S18 [Triticum aestivum]
 AL817458 C01_j324_plate_11 putative RNA helicase, DRH1 [Oryza sativa (japonica cultivar-group)]
 AL812230 B10_e310_plate_11 putative senescence-associated protein [Pisum sativum]
 AL811157 F10_d37_plate_1 putative serine-threonine protein kinase [Oryza sativa (japonica cultivar-group)]
 AL818331 C12_j223_plate_15 putative speckle-type POZ protein [Oryza sativa (japonica cultivar-group)]
 AL826356 B09_p436_plate_10 putative stearyl-acyl carrier protein desaturase [Oryza sativa (japonica cultivar-group)]
 AL813127 G04_e411_plate_11 putative step II splicing factor [Arabidopsis thaliana]
 AL812393 D04_e310_plate_3 putative trypanothione-dependent peroxidase [Oryza sativa (japonica cultivar-group)]
 AL819235 D08_n129_plate_17 putative tubby protein [Oryza sativa (japonica cultivar-group)]
 AL825395 E10_p335_plate_9 putative ubiquinol-cytochrome c reductase [Oryza sativa (japonica cultivar-group)]
 AL811434 H01_d37_plate_7 putative ubiquitin-specific protease [Oryza sativa (japonica cultivar-group)]
 AL808290 G01_a22_plate_14 putative UDP-glucose 4-epimerase [Oryza sativa (japonica cultivar-group)]
 AL814470 D10_h116_plate_11 putative xylanase inhibitor protein [Triticum turgidum subsp. durum]
 AL809873 E09_d15_plate_2 putative zinc finger protein [Oryza sativa (japonica cultivar-group)]
 AL822204 B09_p234_plate_21 putative zinc finger protein [Oryza sativa]
 AL817125 E11_j324_plate_3 rab28 protein - maize
 AL818066 E11_j223_plate_11 replication licensing factor MCM7 homologue [Zea mays]
 AL812978 B08_e411_plate_8 respiratory burst oxidase homolog [Solanum tuberosum]
 AL828040 C08_p739_plate_5 ribulose 1,5-bisphosphate carboxylase/oxygenase large chain [Triticum aestivum]
 AL810636 F06_e29_plate_5 seed storage protein [Triticum aestivum]
 AL822366 F07_p234_plate_23 senescence-associated protein 15 [Hemerocallis hybrid cultivar]
 AL813152 C06_e411_plate_12 serine/threonine protein kinase, putative [Arabidopsis thaliana]
 AL808464 F10_a22_plate_11 seven in absentia (sina) protein family [Arabidopsis thaliana]
 AL813951 F11_e512_plate_13 signal recognition particle - related [Arabidopsis thaliana]
 AL814828 H01_h116_plate_3 similar to HRP11 [Rattus norvegicus]
 AL812337 F03_e310_plate_2 sucrose transporter SUT1D [Triticum aestivum]
 AL827975 C10_p739_plate_4 sucrose-phosphate synthase [Saccharum officinarum]
 AL820630 G11_o232_plate_15 thionin precursor - gamma-barley
 AL815435 A02_j223_plate_5 thionin precursor-gamma - barley
 AL808317 C01_a22_plate_15 transducin / WD-40 repeat protein family [Arabidopsis thaliana]
 AL814284 D08_e512_plate_7 transferase - related [Arabidopsis thaliana]
 AL818580 E06_j125_plate_8 translation elongation factor 1-alpha [Choanephora cucurbitarum]
 AL827086 E09_p638_plate_7 uclacyanin 3-like protein [Oryza sativa]
 AL815587 C08_j223_plate_7 unknown [Arabidopsis thaliana]
 AL814036 E03_e512_plate_15 unknown [Arabidopsis thaliana]
 AL813940 E08_e512_plate_13 unknown [Arabidopsis thaliana]
 AL812123 E01_e310_plate_11 unknown [Triticum aestivum]
 AL815032 A11_h116_plate_7 unknown protein [Arabidopsis thaliana]
 AL817877 G08_j226_plate_12 unknown protein [Arabidopsis thaliana]
 AL827127 A06_p638_plate_7 unknown protein [Oryza sativa (japonica cultivar-group)]
 AL825260 D01_p335_plate_7 unknown protein [Oryza sativa (japonica cultivar-group)]
 AL818133 E04_j223_plate_12 unknown protein [Oryza sativa (japonica cultivar-group)]
 AL813445 G09_e29_plate_7 unknown protein [Oryza sativa (japonica cultivar-group)]
 AL811228 G12_d37_plate_2 unknown protein [Oryza sativa (japonica cultivar-group)]
 AL825738 D09_p234_plate_15 unknown protein [Oryza sativa]
 AL817031 H03_j324_plate_1 unnamed protein product [Arabidopsis thaliana] contains similarity to EH domain containing
 AL826082 A05_p436_plate_3 unnamed protein product [Oryza sativa (japonica cultivar-group)]
 AL827122 B01_p638_plate_7 unnamed protein product [Oryza sativa (japonica cultivar-group)]
 AL819731 B10_n129_plate_4 unnamed protein product [Oryza sativa (japonica cultivar-group)]
 AL817461 C10_j324_plate_11 unnamed protein product [Oryza sativa (japonica cultivar-group)]
 AL820245 G08_n130_plate_15 unnamed protein product [Oryza sativa (japonica cultivar-group)]
 AL825285 H03_p335_plate_7 Vacuolar ATP synthase subunit C (V-ATPase C subunit) [Vacuolar proton pump C subunit]
 AL814440 A04_h116_plate_11 vacuolar proton-ATPase [Hordeum vulgare subsp. vulgare]
 AL814743 D08_h116_plate_2 WCI proteinase inhibitor [Triticum aestivum]
 AL813630 A10_e29_plate_12 WD-40 repeat protein family [Arabidopsis thaliana]
 AL821528 F10_p133_plate_13 WRKY20 [Oryza sativa (japonica cultivar-group)]

List of sequences showing highest expression in N0 and N1 and lowest expression in FYM: Figure 2c1

AL820069	F03_n130_plate_64	3-ketocyl-CoA thiolase-like protein [Oryza sativa (japonica cultivar-group)]
AL821934	C07_n130_plate_66	60S RIBOSOMAL PROTEIN L15
AL829767	E08_p840_plate_7	68 kDa protein HP68 [Triticum aestivum]
AL820201	G03_n130_plate_63	actin bundling protein ABP135 [imported] - trumpet lily
AL813792	C02_e512_plate_10	acyl CoA binding protein (ACBP) family [Arabidopsis thaliana]
AL817788	C02_i226_plate_11	ADP, ATP carrier protein, mitochondrial, putative/ADP/ATP translocase, putative/adenuine nucleotide translocator
AL809445	F05_a11_plate_1	ADP-ribosylation factor-like protein [Arabidopsis thaliana]
AL811858	C11_d15_plate_17	alcohol dehydrogenase class III (Glutathione-dependent formaldehyde dehydrogenase) (FDH) (FALDH) (GSH-FDH)
AL824739	E05_p234_plate_1	allene oxide synthase [Triticum aestivum]
AL820356	H07_n130_plate_32	alpha-amylase
AL809520	C05_a11_plate_4	AP47/50p (gb/AAB88283.1) [Arabidopsis thaliana]
AL816678	G04_i226_plate_1	asparagine synthetase 2 [Hordeum vulgare]
AL822489	F01_p234_plate_26	ATP sulfurylase [Glycine max]
AL812595	A08_e310_plate_6	ATP-dependent Clp protease proteolytic subunit (ClpR3), putative [Arabidopsis thaliana]
AL819728	B04_n129_plate_4	ATP-dependent RNA helicase-like protein [Arabidopsis thaliana]
AL823170	C01_p133_plate_12	beta 5 subunit of 20S proteasome [Oryza sativa (japonica cultivar-group)]
AL828022	A10_p739_plate_5	beta3-galacturonyltransferase [Triticum aestivum]
AL810544	B07_e29_plate_4	CAA30376.1 protein [Oryza sativa]
AL808747	D11_a22_plate_7	calmodulin-binding protein [Arabidopsis thaliana]
AL808512	D11_a22_plate_10	chaperonin, putative [Arabidopsis thaliana]
AL825177	C06_p335_plate_6	COLD SHOCK PROTEIN CS66
AL811912	A08_d15_plate_18	cystatin [Triticum aestivum]
AL819788	B12_n129_plate_5	cysteine protease component of protease-inhibitor complex [Zea mays]
AL812819	E06_e411_plate_3	cytosolic monodehydroascorbate reductase [Oryza sativa (japonica cultivar-group)]
AL811236	A01_d37_plate_3	dehydrogenase/reductase family protein [Arabidopsis thaliana]
AL821762	B02_n130_plate_56	dihydroipoamide S-acyltransferase [Arabidopsis thaliana]
AL817204	H06_j324_plate_5	embryonic abundant protein, group 3 - wheat (fragment)
AL820800	B11_o232_plate_5	EST B1088C09.3 [Oryza sativa (japonica cultivar-group)]
AL809799	A01_a11_plate_10	EST B1153F04.17 [Oryza sativa (japonica cultivar-group)]
AL809494	G01_a11_plate_3	EST OJ991113_30.8 [Oryza sativa (japonica cultivar-group)]
AL810580	F06_e29_plate_4	EST OSJNBa0004N05.4 [Oryza sativa (japonica cultivar-group)]
AL826258	B07_p436_plate_8	EST OSJNBa0016N04.19 [Oryza sativa (japonica cultivar-group)]
AL821687	A07_n130_plate_39	EST OSJNBa0035H04.7 [Oryza sativa (japonica cultivar-group)]
AL823157	A10_p133_plate_12	EST OSJNBa0043L24.13 [Oryza sativa (japonica cultivar-group)]
AL822688	B05_p335_plate_1	EST OSJNBa0070D17.16 [Oryza sativa (japonica cultivar-group)]
AL812363	A04_e310_plate_3	EST OSJNBa0095E20.10 [Oryza sativa (japonica cultivar-group)]
AL808992	F02_e22_plate_12	EST OSJNBa0072N21.15 [Oryza sativa (japonica cultivar-group)]
AL812386	C08_e310_plate_3	EST P0408G07.24 [Oryza sativa (japonica cultivar-group)]
AL821653	A04_n130_plate_63	EST P0408G07.8 [Oryza sativa (japonica cultivar-group)]
AL822456	H12_p234_plate_25	EST P0410E03.18 [Oryza sativa (japonica cultivar-group)]
AL822610	G04_p335_plate_10	EST P0497A05.20 [Oryza sativa (japonica cultivar-group)]
AL813641	B11_e29_plate_12	EST P0529E05.15 [Oryza sativa (japonica cultivar-group)]
AL809311	G04_a11_plate_16	EST P0707D10.18 [Oryza sativa (japonica cultivar-group)]
AL826477	E02_p537_plate_3	eukaryotic translation initiation factor 4B [Triticum aestivum]
AL817587	D02_i226_plate_8	expressed protein [Arabidopsis thaliana]
AL813808	E05_e512_plate_10	expressed protein [Arabidopsis thaliana]
AL821285	F09_p133_plate_6	expressed protein [Arabidopsis thaliana]
AL817871	F10_i226_plate_12	expressed protein [Arabidopsis thaliana]
AL820207	G04_n130_plate_38	expressed protein [Arabidopsis thaliana]
AL808468	E07_a22_plate_17	expressed protein [Arabidopsis thaliana]
AL820133	F09_n130_plate_41	expressed protein [Arabidopsis thaliana]
AL813501	A10_e29_plate_10	GAMYB-binding protein [Hordeum vulgare subsp. vulgare]
AL826301	G05_p436_plate_8	gene_id:MNC6.16-unknown protein [Arabidopsis thaliana]
AL824774	E10_p234_plate_2	glucosyltransferase [Triticum aestivum]
AL820797	B10_o232_plate_8	Glyceraldehyde 3-phosphate dehydrogenase (GAPDH)
AL810462	H08_e29_plate_2	GTP-binding protein rab2 - rice
AL822483	E05_p234_plate_26	H+-transporting two-sector ATPase (EC 3.6.3.14) beta chain,
AL826254	A12_p436_plate_8	haloacid dehalogenase-like hydrolase family [Arabidopsis thaliana]
AL826066	G01_p436_plate_1	Histone Octamer Chain D, Chromosomal Protein, Alpha Carbons Only
AL820636	H11_o232_plate_15	hypothetical protein (probable V-ATPase, 20K chain [imported]) - Neurospora crassa)
AL823227	C02_p133_plate_1	hypothetical protein [Arabidopsis thaliana]
AL826262	B11_p436_plate_8	hypothetical protein [Oryza sativa (japonica cultivar-group)]
AL810506	F02_e29_plate_3	Hypothetical protein [Oryza sativa]
AL813198	C01_e411_plate_13	hypothetical protein F21F14.180 - Arabidopsis thaliana
AL827647	C10_p638_plate_13	hypothetical protein-similar to Arabidopsis thaliana chromosome 3, [Oryza sativa (japonica cultivar-group)]
AL821787	B04_n130_plate_66	initiation factor 3g [Arabidopsis thaliana]
AL812347	G06_e310_plate_2	inorganic pyrophosphatase [Oryza sativa]
AL823140	G12_p133_plate_11	mitochondrial aldehyde dehydrogenase ALDH2 [Hordeum vulgare subsp. vulgare]
AL811964	G08_d15_plate_18	molybdenum cofactor biosynthesis protein Cnx1 [Hordeum vulgare]
AL817242	H05_j324_plate_6	myosin heavy chain-related [Arabidopsis thaliana]
AL816830	C04_i226_plate_4	NADH-ubiquinone oxidoreductase 24 kDa subunit, mitochondrial precursor
AL817536	E11_i226_plate_7	NADP-dependent oxidoreductase, putative [Arabidopsis thaliana]
AL809259	B06_a11_plate_13	nitrilase-like protein [imported] - rice
AL826113	E09_p436_plate_3	nitrilase-like protein [imported] - rice
AL808540	H10_A22_plate_10	nitrophenylphosphatase-like protein [Arabidopsis thaliana]
AL828089	C11_p436_plate_10	no hits
AL821623	A01_n130_plate_52	no hits
AL821632	A02_n130_plate_41	no hits
AL822622	A04_p335_plate_11	no hits
AL810771	A05_d26_plate_11	no hits
AL823284	A05_p133_plate_2	no hits
AL816573	A07_j122_plate_7	no hits
AL816927	A11_i226_plate_6	no hits
AL825103	B03_p234_plate_13	no hits
AL816701	B05_i226_plate_2	no hits
AL817509	B10_i226_plate_7	no hits
AL820806	C01_o232_plate_2	no hits
AL813274	C05_e411_plate_15	no hits
AL818119	C07_j223_plate_12	no hits
AL815777	C08_j122_plate_9	no hits
AL817795	C10_i226_plate_11	no hits
AL810889	D03_d26_plate_13	no hits
AL809259	D11_a11_plate_13	no hits
AL826113	E09_p436_plate_3	no hits
AL813171	F04_e411_plate_12	no hits
AL818413	G01_i125_plate_1	no hits
AL819559	G02_n129_plate_11	no hits
AL808893	G12_a22_plate_9	no hits
AL820311	H02_n130_plate_63	no hits
AL821108	H02_o232_plate_4	no hits
AL826133	H05_p436_plate_3	no hits
AL826241	H05_p436_plate_7	no hits
AL810525	H06_e29_plate_3	no hits
AL811826	H08_d15_plate_16	no hits
AL821136	H08_o232_plate_4	no hits
AL821159	H12_o232_plate_10	no hits
AL822272	A07_p234_plate_22	no hits
AL811415	A08_d37_plate_7	no hits
AL821729	A11_n130_plate_56	no hits
AL821730	A11_n130_plate_66	no hits
AL808725	B03_a22_plate_7	no hits
AL821775	B03_n130_plate_56	no hits
AL809764	B04_a11_plate_9	no hits
AL825649	B07_p234_plate_14	no hits
AL829550	B08_p840_plate_2	no hits
AL829870	C11_p840_plate_10	no hits
AL814464	D04_b116_plate_11	no hits
AL809165	D09_a11_plate_13	no hits
AL817802	D10_i226_plate_11	no hits
AL815975	E05_j122_plate_12	no hits

AL819371	E05_n129_plate_19	no hits
AL808881	F04_a22_plate_9	no hits
AL809398	F10_a11_plate_11	no hits
AL816966	F10_j226_plate_6	no hits
AL809129	G01_a11_plate_12	no hits
AL828005	G03_p739_plate_4	no hits
AL818665	G05_j125_plate_11	no hits
AL809553	G10_a11_plate_4	no hits
AL811408	G10_d37_plate_6	no hits
AL820274	G10_n130_plate_64	no hits
AL820275	G10_n130_plate_66	no hits
AL827549	G12_p638_plate_11	no hits
AL820393	H10_n130_plate_63	no hits
AL808713	H11_a22_plate_6	no hits
AL813966	A11_e512_plate_14	nucleosome/chromatin assembly factor group A [Zea mays]
AL808700	G05_a22_plate_6	OsNAC8 protein [Oryza sativa]
AL828757	B03_p739_plate_9	oxoglutarate/malate translocator, putative [Arabidopsis thaliana]
AL819032	H06_n129_plate_7	pentatricopeptide (PPR) repeat-containing protein-like protein [Oryza sativa (japonica cultivar-group)]
AL822345	B10_p234_plate_23	peptidylprolyl isomerase-like protein [Arabidopsis thaliana]
AL822178	G09_p234_plate_20	phytoalexin-deficient 4 protein (pad4) [Arabidopsis thaliana]
AL811991	B10_d15_plate_19	probable b-keto acyl reductase (EC 1.1.-.-) - barley
AL825660	C08_p234_plate_14	probable RING3 protein [imported] - Arabidopsis thaliana
AL823134	G01_p133_plate_11	prokaryotic DNA polymerase III gamma subunit -related [Arabidopsis thaliana]
AL808673	A11_a22_plate_6	Proteasome subunit alpha type 3 (20S proteasome alpha subunit G) (20S proteasome subunit alpha-7)
AL809221	E07_a11_plate_14	PUTATIVE 3,4-DIHYDROXY-2-BUTANONE KINASE
AL811404	F06_d37_plate_6	putative adaptor protein/ adaptin-like [Oryza sativa (japonica cultivar-group)]
AL819856	B02_n129_plate_6	putative angio-associated migratory cell protein [Oryza sativa]
AL828193	C08_n130_plate_63	putative AP2-related transcription factor [Oryza sativa]
AL809085	H12_a11_plate_10	putative ATP synthase delta chain, mitochondrial precursor [Oryza sativa (japonica cultivar-group)]
AL820573	F08_o232_plate_14	putative CMP-sialic acid transporter [Oryza sativa (japonica cultivar-group)]
AL811816	G09_d15_plate_16	putative ethylene-responsive small GTP-binding protein [Oryza sativa (japonica cultivar-group)]
AL815973	E03_j122_plate_12	putative gag-pol precursor [Oryza sativa (japonica cultivar-group)]
AL809339	F03_a11_plate_17	putative GMP synthase [Oryza sativa (japonica cultivar-group)]
AL820023	E11_n130_plate_42	putative homeodomain-leucine zipper protein [Oryza sativa (japonica cultivar-group)]
AL810268	C01_d15_plate_9	Putative hydrolase [Oryza sativa]
AL820561	B10_o232_plate_14	putative protein phosphatase [Oryza sativa (japonica cultivar-group)]
AL808898	H10_a22_plate_9	putative serine carboxypeptidase II-3 precursor [Oryza sativa (japonica cultivar-group)]
AL810258	A11_d15_plate_9	putative splicing regulatory protein [Oryza sativa (japonica cultivar-group)]
AL819722	A03_n129_plate_4	putative taxadien-5-alpha-ol O-acetyltransferase [Oryza sativa (japonica cultivar-group)]
AL823451	E11_p133_plate_4	putative xylose kinase [Oryza sativa (japonica cultivar-group)]
AL808900	H12_a22_plate_9	putative z-protein [Oryza sativa (japonica cultivar-group)]
AL827858	D03_p739_plate_12	quinone oxidoreductase homolog - cowpea
AL818411	F11_j125_plate_1	replication licensing factor MCM7 homologue [Zea mays]
AL815322	C12_j223_plate_3	replication protein A, putative [Arabidopsis thaliana]
AL824765	D01_p234_plate_2	ribulose-bisphosphate carboxylase (EC 4.1.1.39) small chain
AL808546	A05_a22_plate_11	S-adenosylmethionine synthetase 1 (Methionine adenosyltransferase 1) (AdoMet synthetase 1)
AL808671	A09_a22_plate_6	Serine/threonine protein phosphatase PP2A-2 catalytic subunit
AL816837	D03_j226_plate_4	Shikimate kinase, chloroplast precursor
AL823448	E07_p133_plate_4	signal recognition particle receptor beta subunit-related protein
AL819754	F05_n129_plate_4	SNF2 domain/helicase domain/RING finger domain-containing protein [Arabidopsis thaliana]
AL822552	H06_p234_plate_27	steroid sulfotransferase-like protein [Arabidopsis thaliana]
AL825595	F11_p335_plate_19	thioredoxin family [Arabidopsis thaliana]
AL814123	E02_e512_plate_3	translational elongation factor Tu [Oryza sativa]
AL826131	H02_p436_plate_3	translationally controlled tumor protein [Triticum aestivum]
AL811692	A04_d15_plate_15	triose phosphate translocator [Triticum aestivum]
AL814759	F12_h116_plate_2	tumor-related protein -related [Arabidopsis thaliana]
AL808692	F03_a22_plate_6	ubiquitin-conjugating enzyme, putative [Arabidopsis thaliana]
AL823053	E09_p133_plate_10	UDP-glucose 4-epimerase [Oryza sativa (japonica cultivar-group)]
AL816776	D06_j226_plate_3	unknown [Arabidopsis thaliana]
AL821120	H05_o232_plate_1	unknown [Zea mays]
AL820262	G09_n130_plate_56	unknown protein [Arabidopsis thaliana]
AL808711	H08_a22_plate_6	unknown protein [Arabidopsis thaliana]
AL809292	B07_a11_plate_16	unknown protein [Arabidopsis thaliana]
AL813617	H02_e29_plate_11	unknown protein [Arabidopsis thaliana]
AL826291	F04_p436_plate_8	unknown protein [Oryza sativa (japonica cultivar-group)]
AL820383	H09_n130_plate_56	unknown protein [Oryza sativa (japonica cultivar-group)]
AL826543	D10_p537_plate_4	unknown protein [Oryza sativa]
AL819693	E07_n129_plate_3	unknown protein [Oryza sativa]
AL819994	E08_n130_plate_41	unnamed protein product [Oryza sativa (japonica cultivar-group)]
AL820643	B01_o232_plate_16	unnamed protein product [Oryza sativa (japonica cultivar-group)]
AL810127	E11_d15_plate_6	Vacuolar ATP synthase 16 kDa proteolipid subunit

List of sequences showing low expression in the low nitrogen treatments and uniformly high expression at higher nitrogen treatments: Figure 2cii

AL811051	H10_d26_plate_16	Coatomer delta subunit (Delta-coat protein) (Delta-COP) (Archain)
AL825714	B01_p234_plate_15	defective protein 2 [Zea mays]
AL822269	A03_p234_plate_22	dTDP-glucose 4-6-dehydratase-like protein [Oryza sativa]
AL825657	C05_p234_plate_14	elongation factor -related [Arabidopsis thaliana]
AL812132	F02_e310_plate_11	EST B1045D11.16 [Oryza sativa (japonica cultivar-group)]
AL811346	A08_d37_plate_5	GAMMA-HORDEIN 3
AL827266	A04_p638_plate_5	geranylgeranyl hydrogenase [Glycine max]
AL810328	A09_e29_plate_1	Histone H3
AL821719	A10_n130_plate_56	hypothetical protein [Oryza sativa (japonica cultivar-group)]
AL826320	C10_p436_plate_9	hypothetical protein [Oryza sativa (japonica cultivar-group)]
AL812766	F08_e310_plate_8	membrane protein [Saccharum hybrid cultivar H65-7052]
AL822495	F10_p234_plate_26	Na ⁺ /H ⁺ antiporter [Triticum aestivum]
AL810738	A10_d26_plate_8	no hits
AL822985	C12_p335_plate_5	no hits
AL814234	D02_e512_plate_6	no hits
AL816529	D12_j122_plate_6	no hits
AL810756	E04_d26_plate_8	putative gag/pol polyprotein, 5'-partial [Oryza sativa (japonica cultivar-group)]
AL813317	A09_e411_plate_2	putative gamma-adaptin 1 [Oryza sativa (japonica cultivar-group)]
AL823091	B04_p133_plate_11	putative phosphoinositide kinase [Oryza sativa]
AL812718	A01_e310_plate_8	Putative serine/threonine kinase [Oryza sativa (japonica cultivar-group)]