



Erratum

Br. J. Pharmacol. (1997), **120**, 1376–1382.

E.J. Mickley, G.A. Gray & D.J. Webb Activation of endothelin ET_A receptors masks the constrictor role of endothelin ET_B receptors in rat isolated small mesenteric arteries.

In the above article, several errors were introduced after the proof stage in the publication process.

In the Introduction, the sentence beginning 'The aim of the present study . . .' should read

'The aim of the present study was to investigate further the role of ET_B receptors in mediating constriction in pressurised rat mesenteric arteries by use of ET-1, the ET_A receptor antagonist, BQ-123 (Ihara *et al.*, 1991), the ET_B selective agonist SRTX S6C (Williams *et al.*, 1991), the ET_B receptor selective antagonist, BQ-788 (Ishikawa *et al.*, 1994) and the ET_A/ET_B antagonist TAK-044 (Kikuchi *et al.*, 1994).

Figure 4 was duplicated and was also published as Figure 5. The correct Figure 5 appears below.

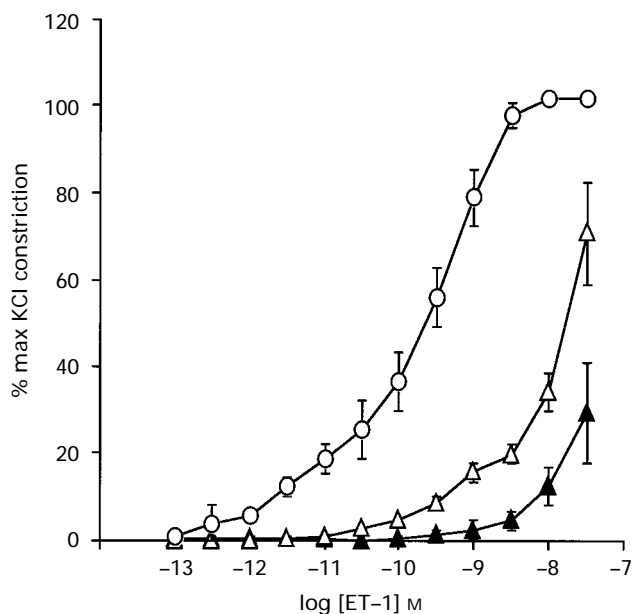


Figure 5 The effects of the non-selective ET_A/ET_B receptor antagonist TAK-044 on endothelin (ET-1)-induced constrictions in rat small mesenteric arteries. The vessels were pre-incubated for 30 min with either 10^{-8} M (\triangle , $n=4$) or 3×10^{-7} M (\blacktriangle , $n=8$) TAK-044. Both treatments significantly inhibited the ET-1 concentration-response curve ($P=0.0002$ and 0.0001 respectively) as compared to control (\circ). All values are mean and vertical lines show s.e.mean.