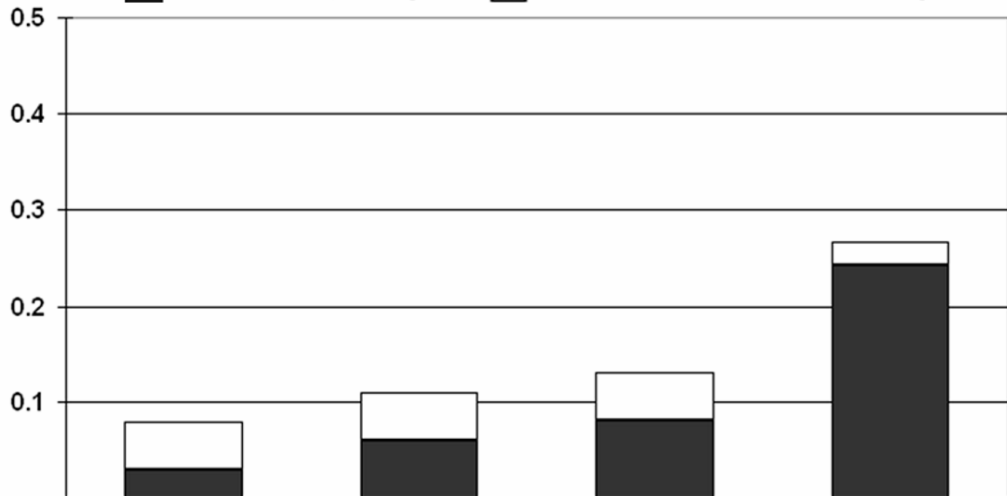


■ **Cassette splicing**

□ **Alternative 3' and 5' splicing**

**Proportion of rodent exons
that are alternatively spliced**



**No. of
total
exons:**

52787

3342

13870

1249

Rodent

+

+

+

+

Primate

+

-

Dog

+

-

Chicken

+

-

-

Fish

+

-

-

-