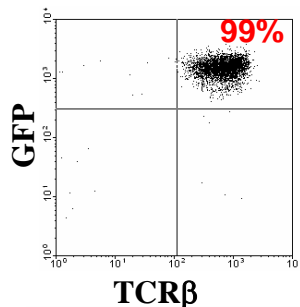


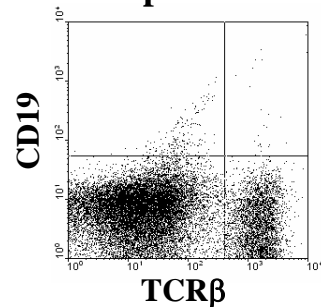
Transferred Cell Populations

(A) T cells
CD2-GFP

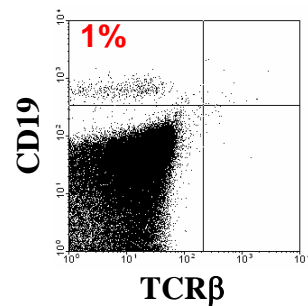
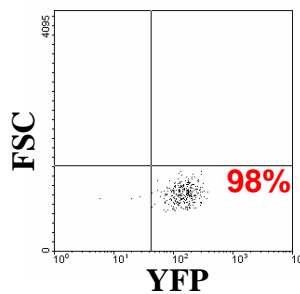
Pre transfer
Sorted Cell Populations



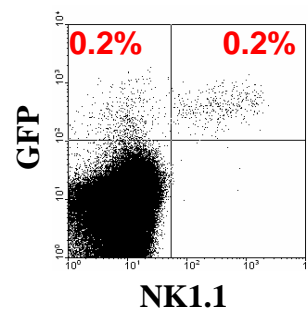
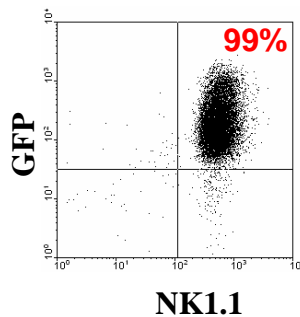
Post transfer
Spleen



(B) B cells
CD19-Cre
Rosa26 EYFP



(C) NK1⁺ cells
Rag1^{-/-}



(D) NK1⁻ cells
Rag1^{-/-}

