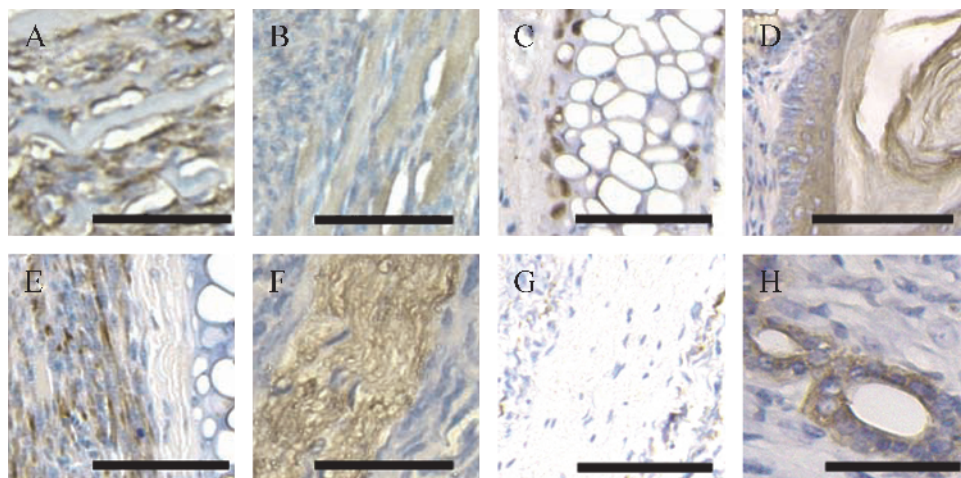


**Figure W1.** *Immunochemical images of tumor sections in Figure 2. (A) IHC for  $\alpha$ -SMA (brown stain). (B) Des (brown stain). (C) vWF (brown stain). (D) Vim (brown stain). (E) Pan-CK (brown stain). (F) Pan-CK (brown stain). (G) EMA (brown stain). (H) S-100 (brown stain). (I) NF (brown stain). (J) NSE (brown stain). (K) GFAP (brown stain). (L) Map2 (brown stain). (M) Negative section. Scale bars: (A, D, G, M) 50  $\mu$ m; (B, C, E, F, H-L) 100  $\mu$ m.*



**Figure W2.** *Immunochemical image of the teratoma. (A)  $\alpha$ -SMA. (B) Des. (C) S-100. The cartilage yielded a positive result. (D) Pan-CK. (E) GFAP. (F) NF. (G) GFAP. (H) Pan-CK. Scale bar: 100  $\mu$ m.*