

Supplemental Figures Legend

Supplemental Figure 1

Comparison of i.p. and i.v. routes of inoculation in ET-mediated lethality. Three female BALB/cJ mice were injected 100 μ l i.v. or 500 μ l i.p. with ET (PA+EF) or EF alone in sterile PBS at the indicated doses.

Supplemental Figure 2

Histopathological evaluation of the kidney at 24 hours in (a) PBS-treated and (b) ET-treated animals reveals vacuolation of cortical tubular epithelial cells following ET administration. 40X objective.

Supplemental Figure 3

Histopathological evaluation of the submandibular gland at 24 hours in (a) PBS-treated and (b) ET-treated animals reveals swollen and vacuolated acinar cells following ET administration. 40X objective.

Supplemental Figure 4

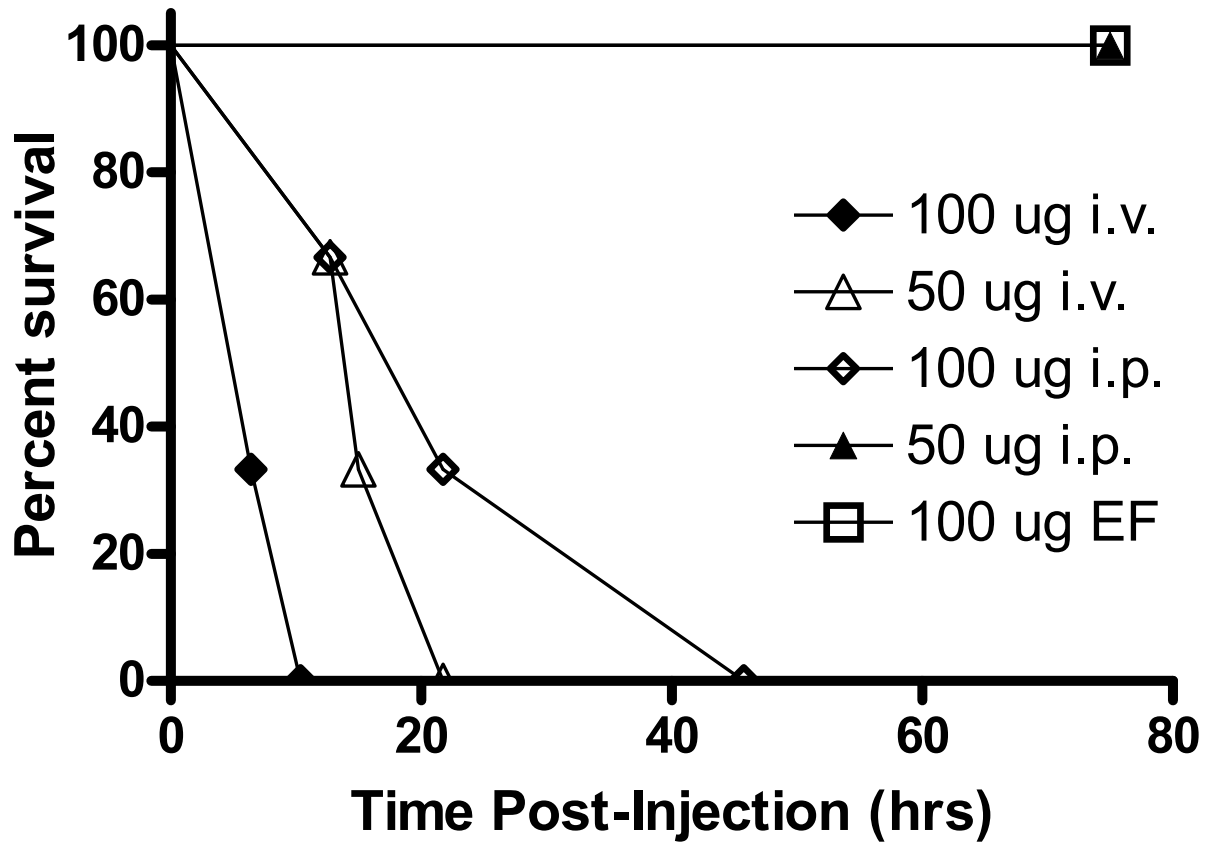
Histopathological evaluation of the ovary at 36 hours in (a) EF-treated and (b) ET-treated animals reveals degeneration of tertiary follicles with dissociation of the thecal cells induced by ET. 20X objective.

Supplemental Figure 5

Histopathological evaluation of the uterus at 36 hours in (a) EF-treated and (b) ET-treated animals reveals degeneration of the mucosal lining following ET administration. 10X objective.

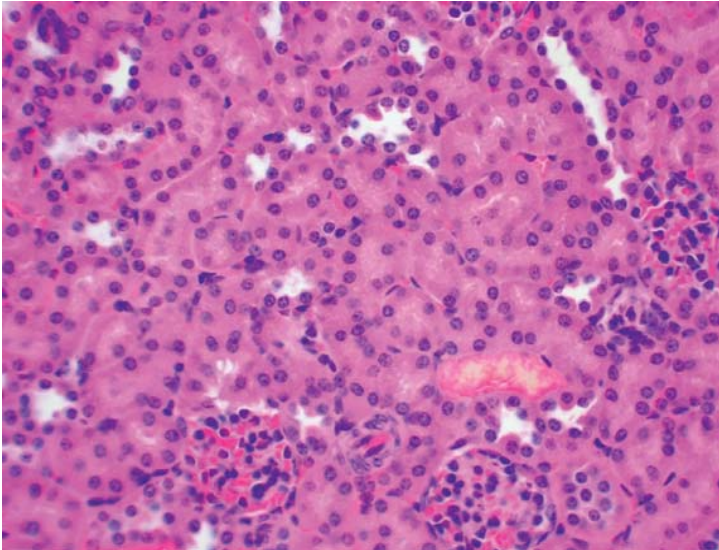
Supplemental Figure 6

Evaluation of blood smears demonstrates hypervacuolation of circulatory monocytes following ET treatment. 100X objective.

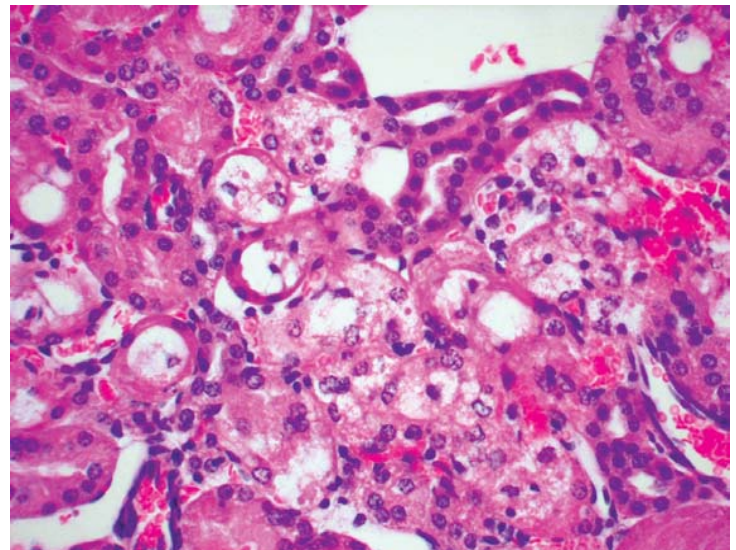


Supplemental Figure 1

a

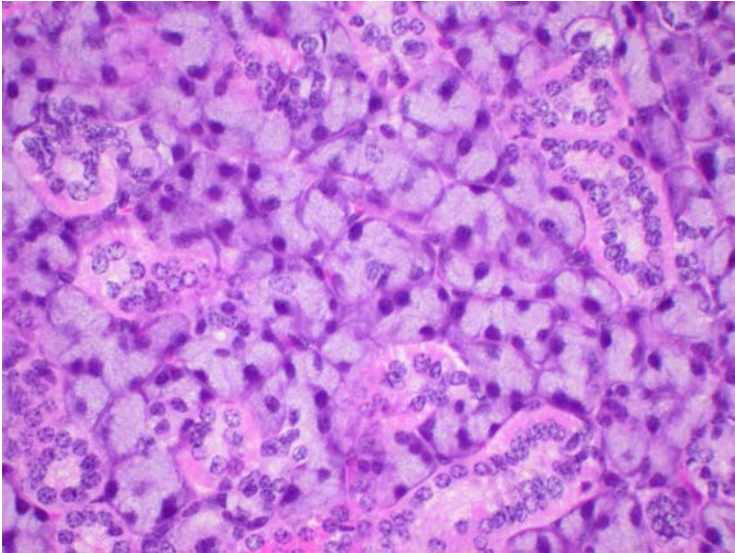


b

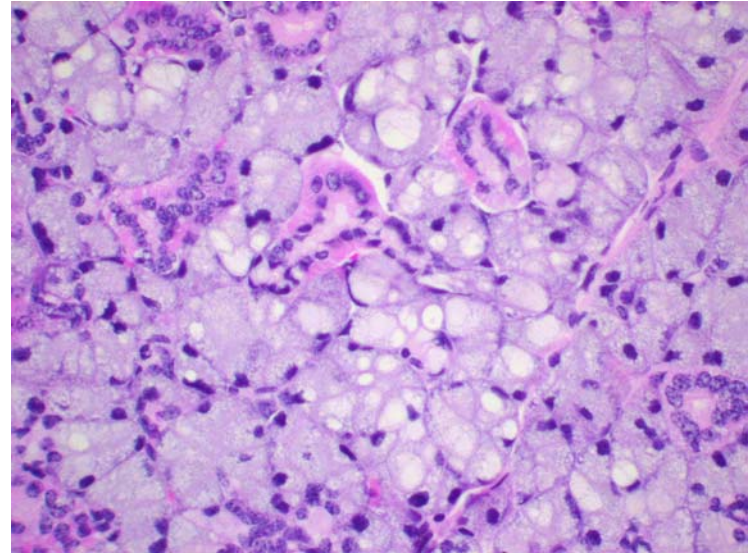


Supplemental Figure 2

a

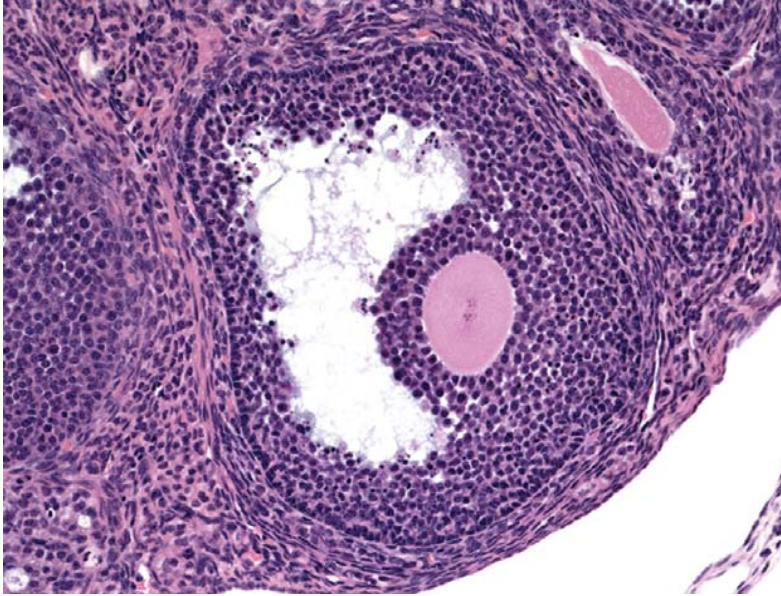


b

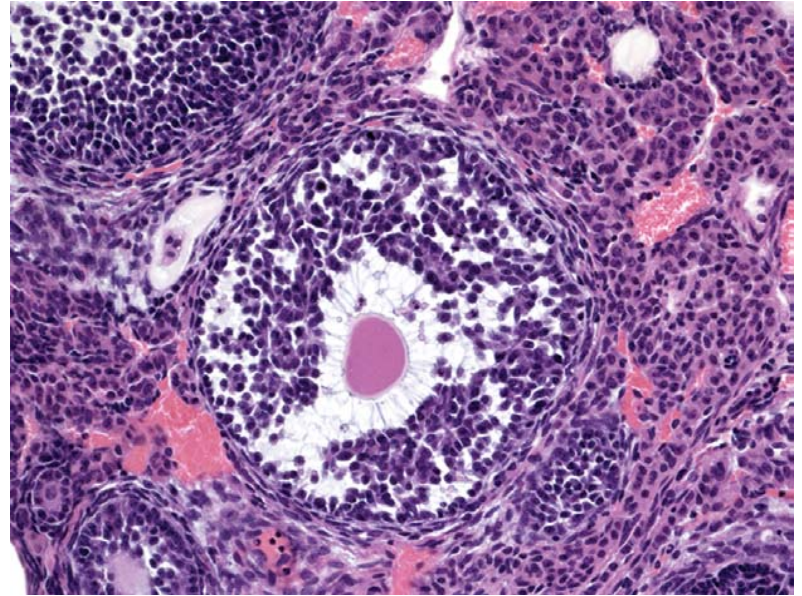


Supplemental Figure 3

a



b

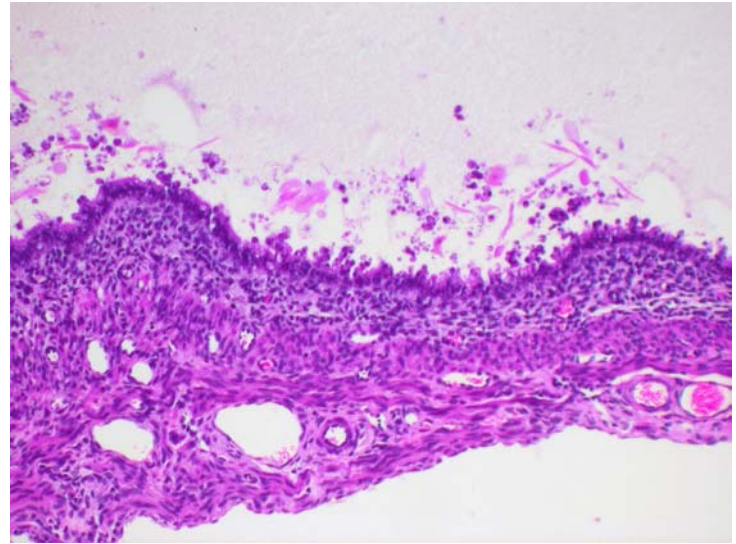


Supplemental Figure 4

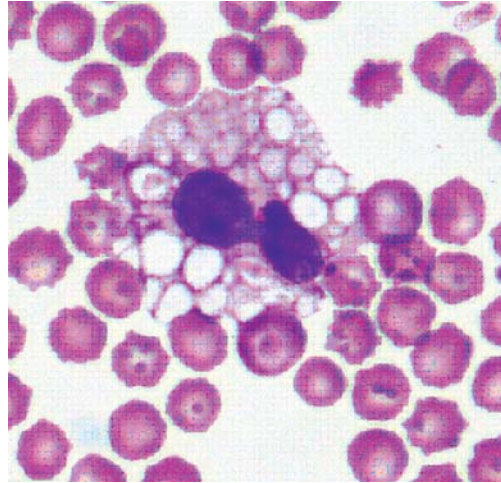
a



b



Supplemental Figure 5



Supplemental Figure 6