

Legends for Supplemental Figures

Supplemental Figure 1.

Upregulation of ER α expression in Cav-1 KO mammary glands *in vivo*.

Inguinal mammary glands (# 4 and 5) were surgically excised from 3 week-old female WT and Cav-1 KO mice. Formalin-fixed, paraffin-embedded sections were then prepared and immuno-stained with anti-ER α rabbit IgG (H-184 from Santa Cruz). Same as Figure 5, except that lower power images (original magnification, 10X) are shown. Note that ER α expression levels are dramatically upregulated in Cav-1 KO luminal epithelial cells (See arrows). Sections from WT mammary glands are shown for comparison.

Supplemental Figure 2.

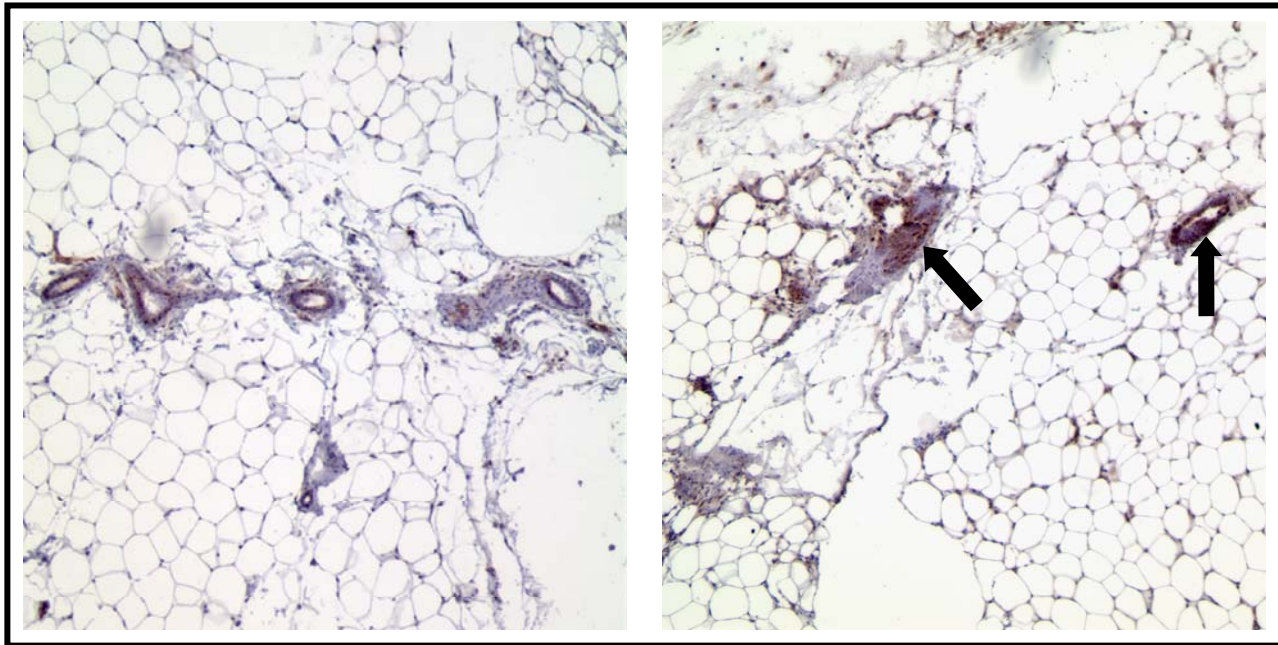
Representative negative control images for ER α and Cyclin D1 immunostaining.

Formalin-fixed, paraffin-embedded sections were prepared from ER α (+) and ER α (--) breast cancer samples were incubated with non-immune rabbit IgG (at the same dilution) as negative controls for ER α and Cyclin D1 immunostaining (both rabbit polyclonals). Bound primary antibodies were detected with an HRP-conjugated secondary antibody. Slides were then counter-stained with hematoxylin (blue color). Representative images are shown. Note that little or no non-specific staining is observed. See Figure 10 for comparison.

ER α Staining

WT

KO



10X

Negative Controls on Human Sections

Cyclin D1 Staining

ER α Staining

