

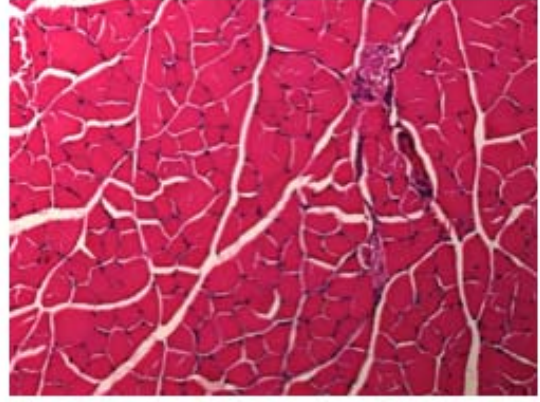
Supplemental Figure Legend

Supplemental Figure 1. Analysis of muscle regeneration following cardiotoxin injection in (A) 4 month and (B) 8.5 month old mice. The gastrocnemius was injected with cardiotoxin and histopathology was assessed 10 days later by H&E staining. All mice received bilateral injections of cardiotoxin or PBS vehicle as a control, hence doubling the number of muscles analyzed per animal. Two independent panels from different animals are shown for each experimental condition. Wt mice were injected with PBS (N=2) or cardiotoxin (N=2-3), while *scgd*^{-/-} mice were injected with PBS (N=2-3) or cardiotoxin (N=4-7). CTX=cardiotoxin

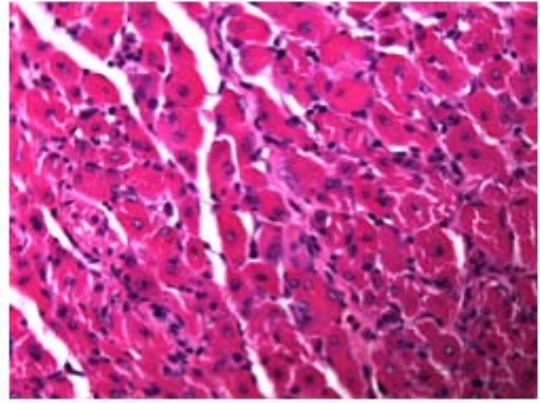
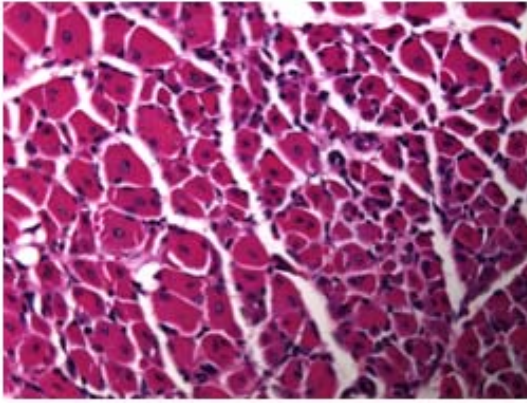
A

4 Months

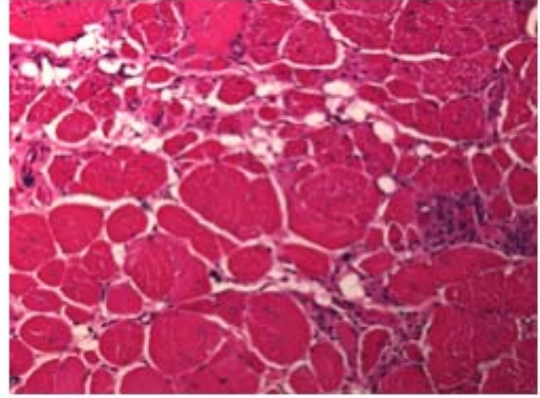
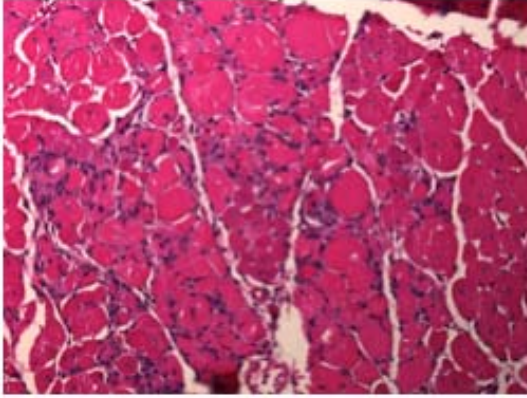
WT PBS



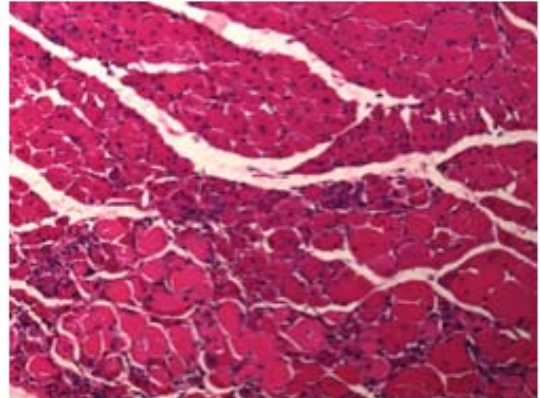
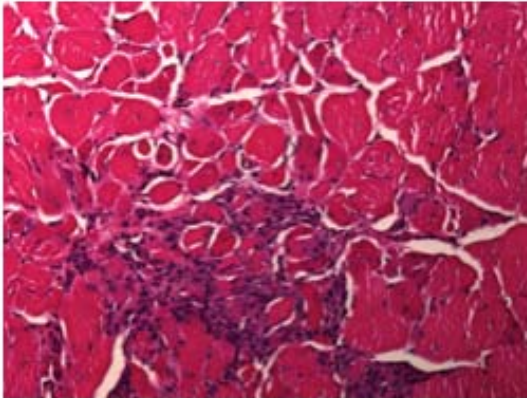
WT CTX



scgd^{-/-} PBS



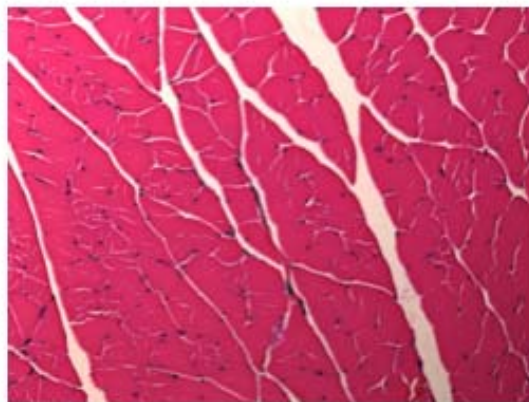
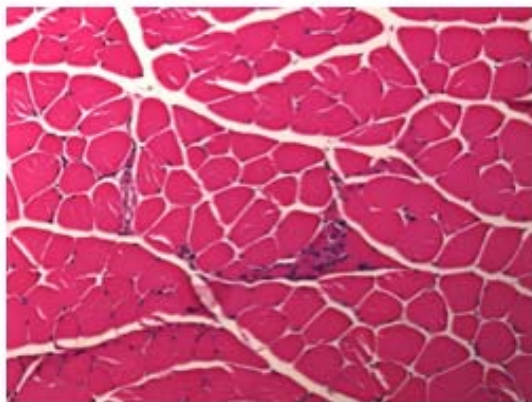
scgd^{-/-} CTX



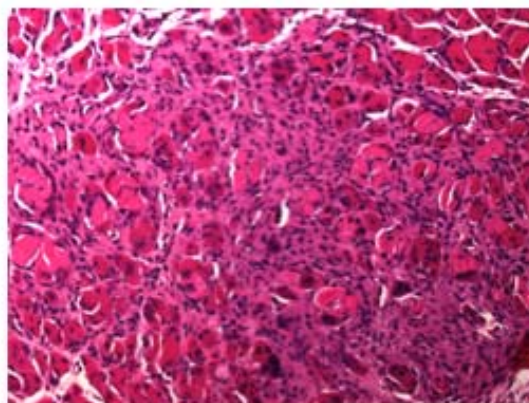
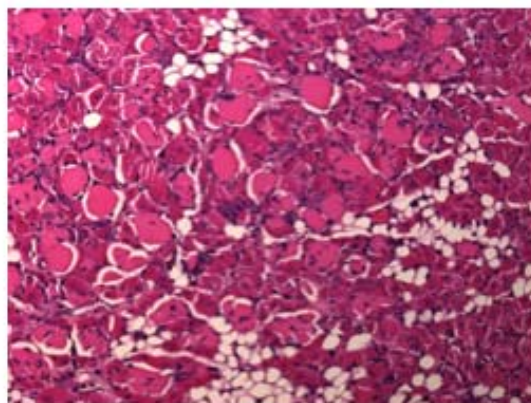
B

8.5 Months

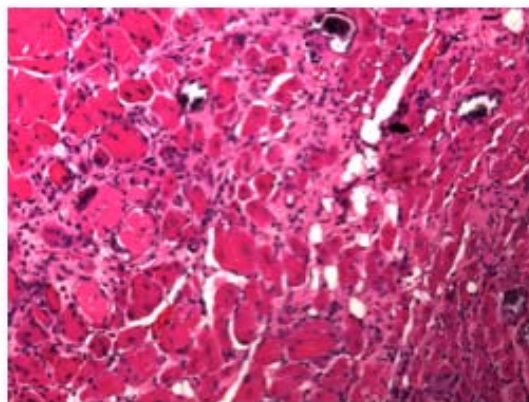
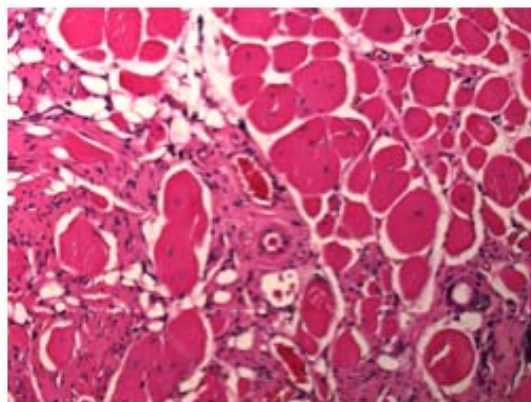
WT PBS



WT CTX



scgd^{-/-} PBS



scgd^{-/-} CTX

