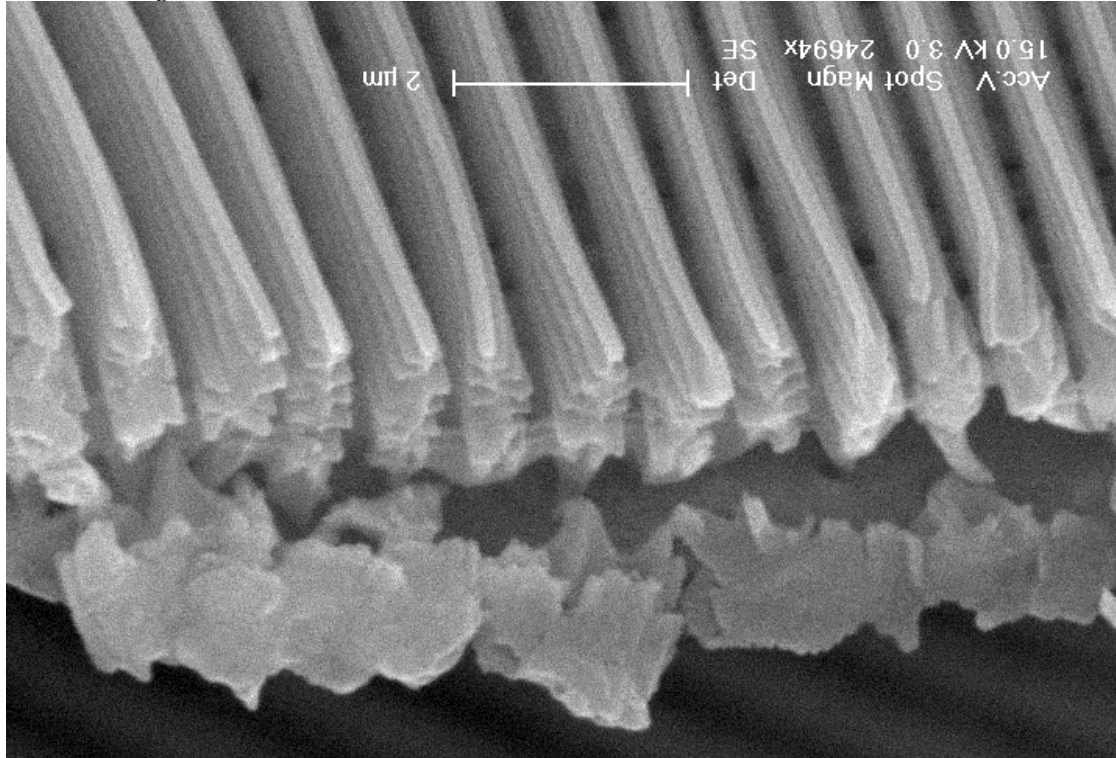


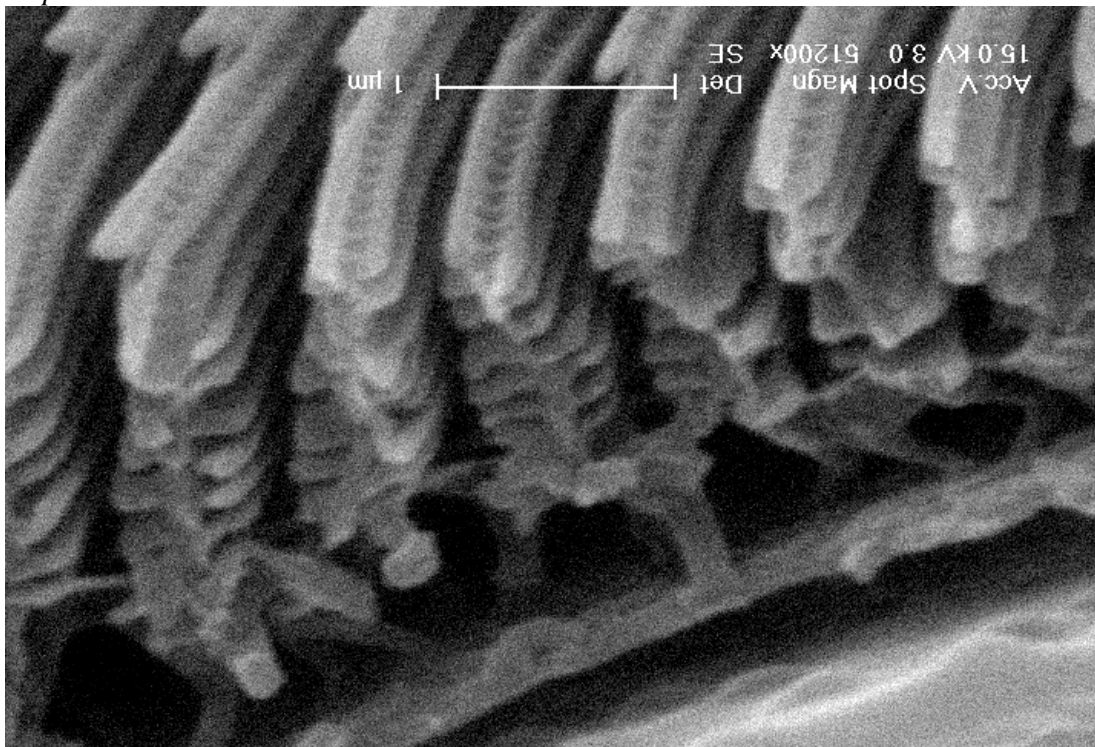
Scanning Electron Micrographs of Butterfly Wing Scales.

Ridge-lamellae Structure.

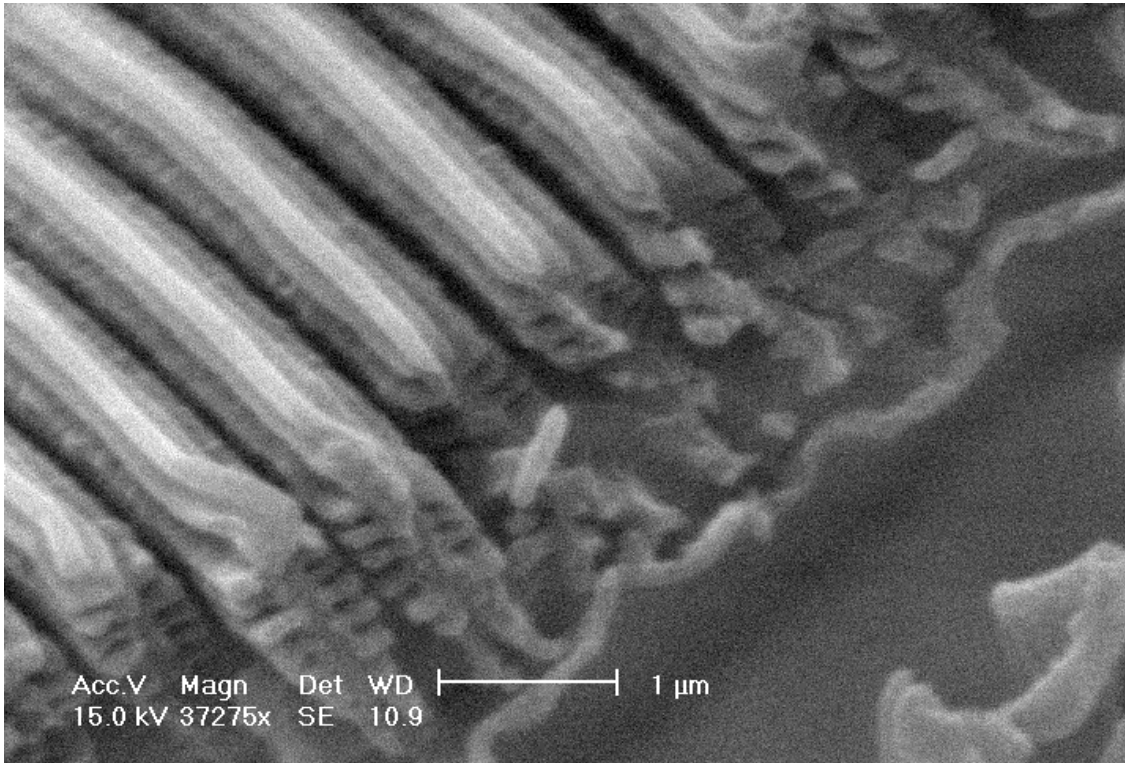
Callicore aegina:



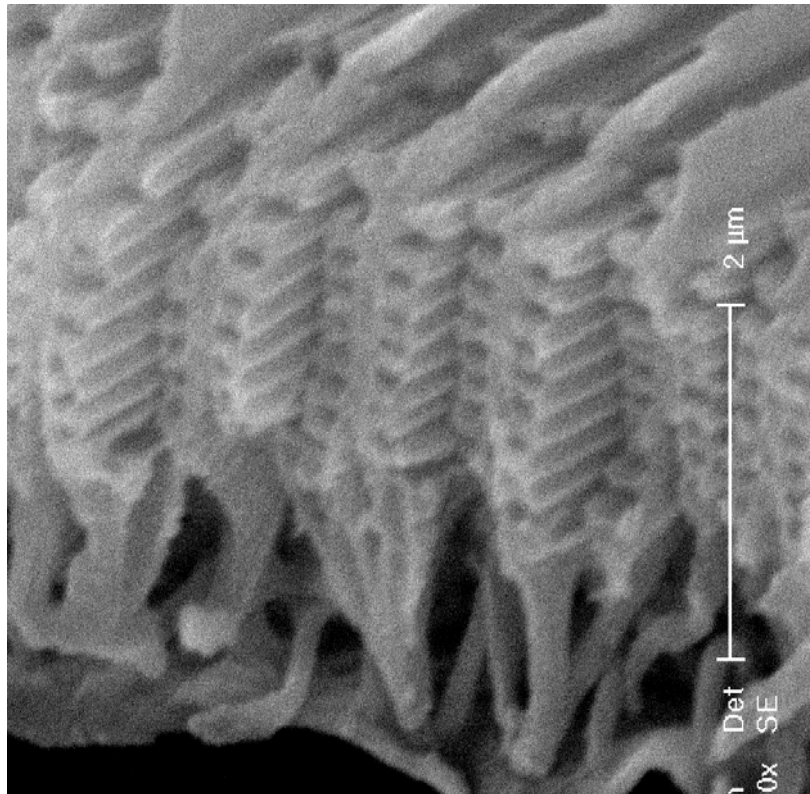
Morpho didius:



Perisama humboldtii:

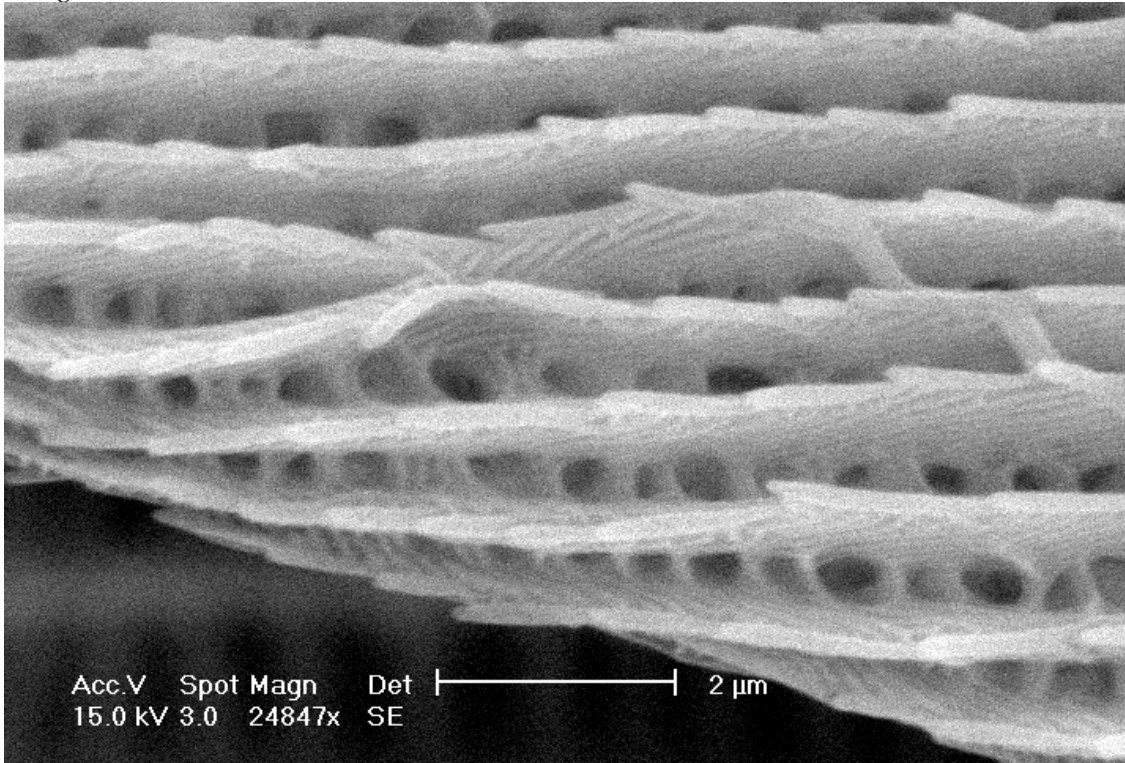


Trogonoptera brookiana:

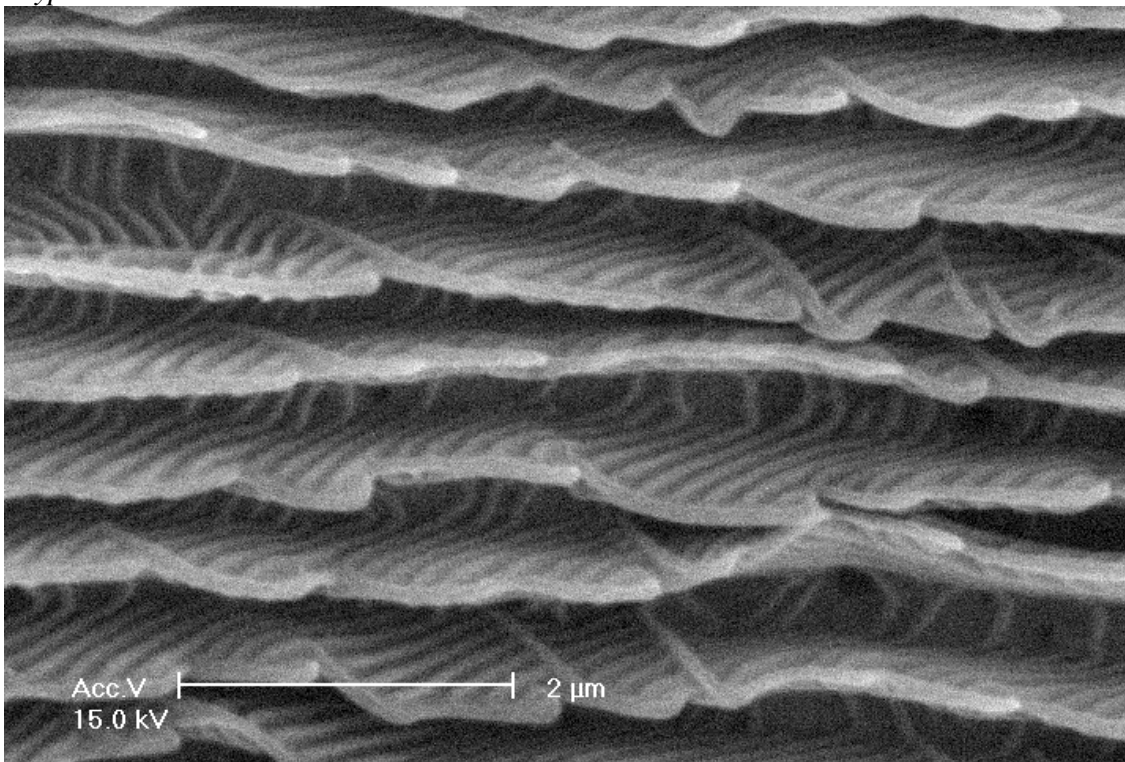


Microrib Structure.

Caligo martia:

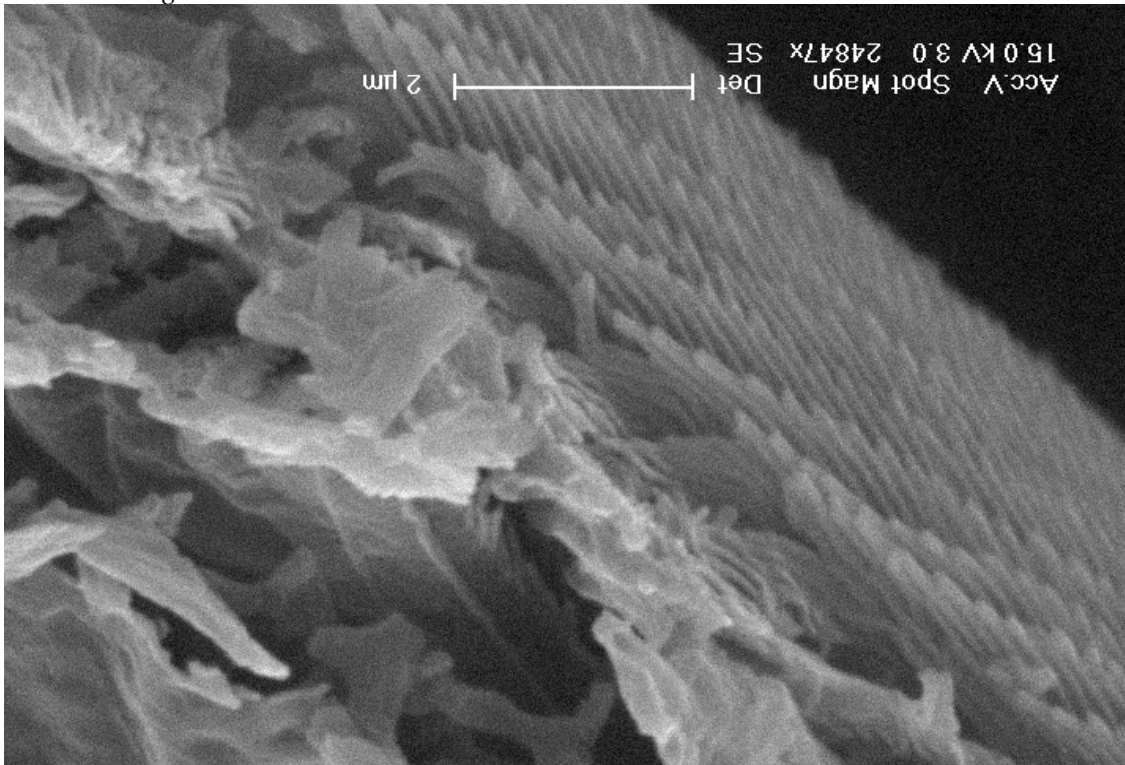


Eryphanis aesacus:

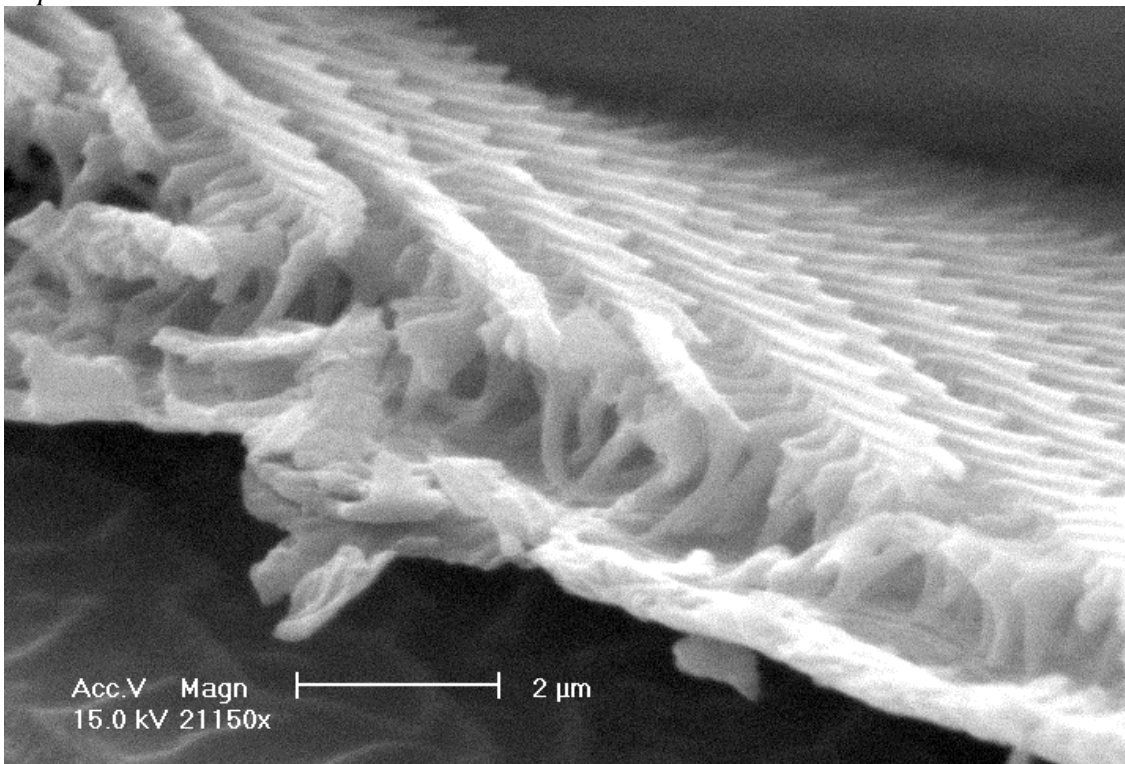


Tilted Multi-layer Structure.

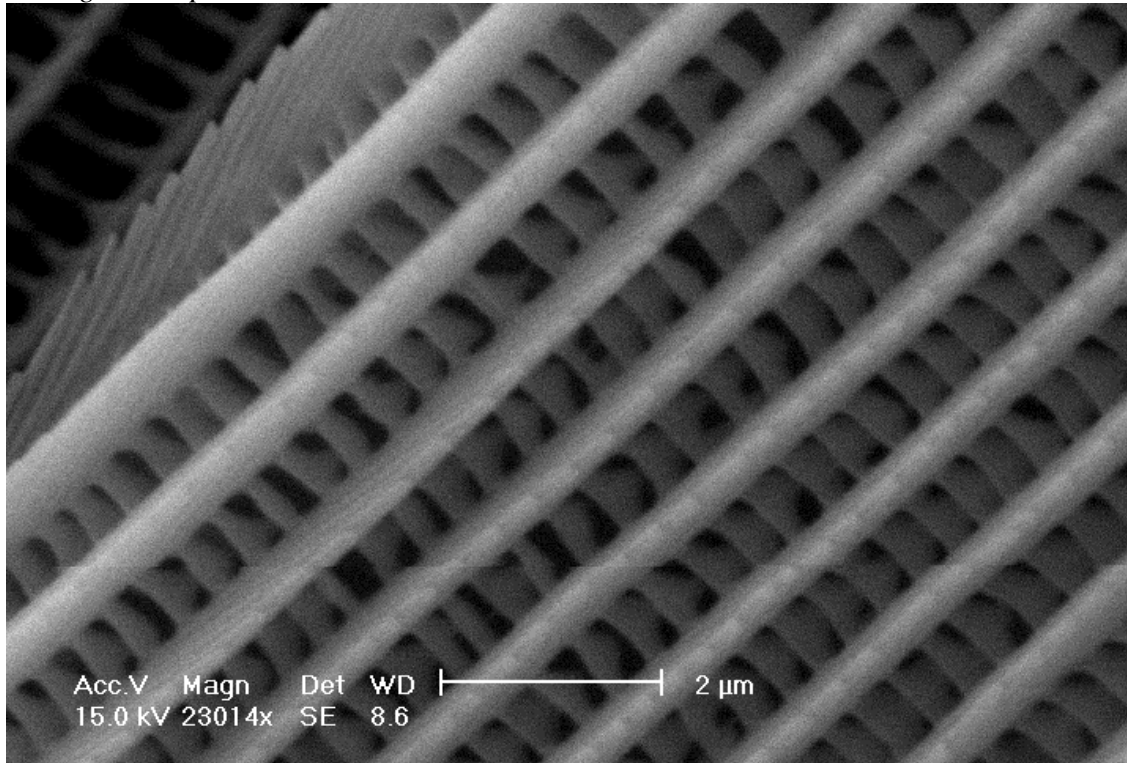
Diaethria neglecta:



Euploea midamus:



Paulogramma peristera:



Troides magellanus:

