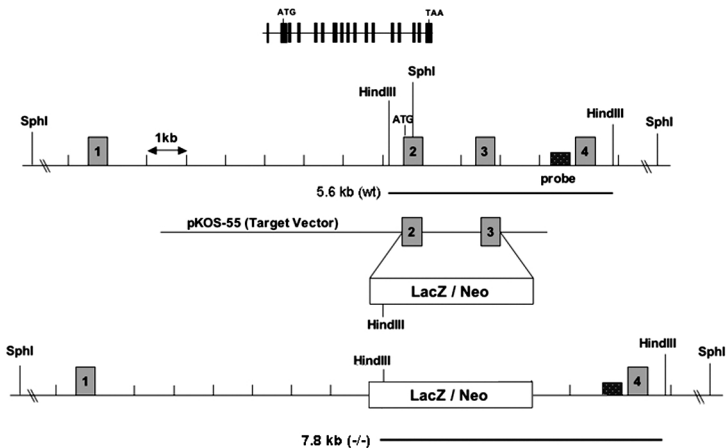
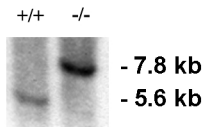
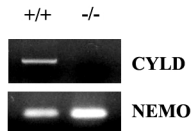
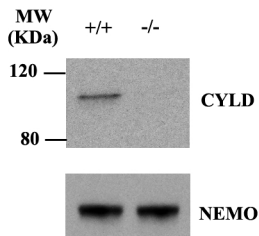


**A****B****C****D****supplemental 1**

Supplemental Figure 1.

Generation and analysis of the knockout *cylid* allele. **(A)** CYLD knockout strategy. Shown from top to bottom, the *cylid* locus with the introns and exons are depicted according to Genbank depository. The ATG start codon is in exon 2 and the probe used for Southern analysis is shown in a hatched box. The targeting vector comprising a LacZ/Neo cassette is used to replace the *cylid* exon 2 and 3 and the targeted locus is shown. **(B)** Targeted CYLD was identified by Southern blot analysis using *HindIII* digested mouse tail DNA that displays the wild type (+/+) 5.6 kb and the targeted (-/-) 7.8 kb fragments. **(C)** RT-PCR using RNA isolated from spleen from wild type and *Cyld*<sup>-/-</sup> mice. **(D)** Western blot for CYLD and NEMO in splenic cells of wild type and *Cyld*<sup>-/-</sup> mice.