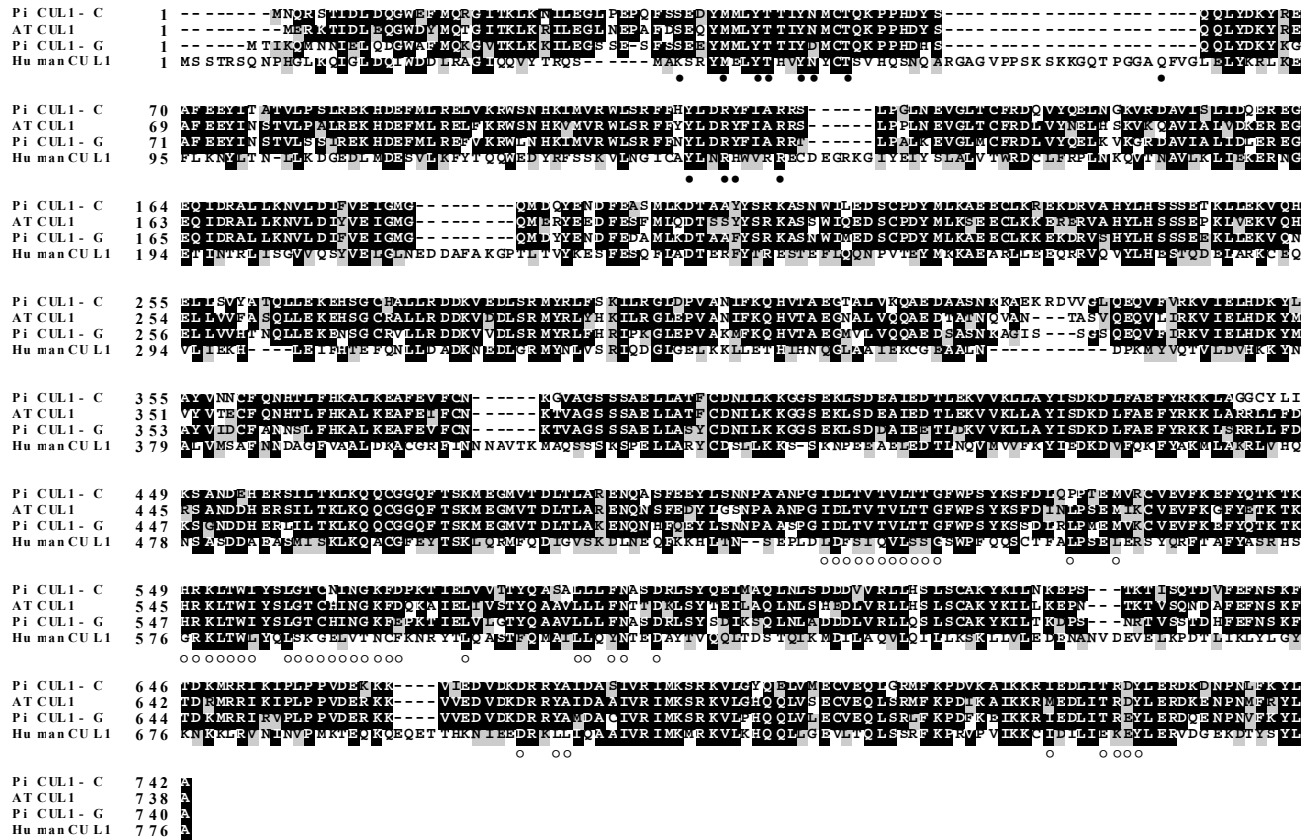


Hua and Kao, Supplemental Figure 5



Supplemental Figure 5. Alignment of Amino Acid Sequences of Pi CUL1-C and Pi CUL1-G of *P. inflata*, ATCUL1 of *Arabidopsis*, and CUL1 of human. For a given site, the amino acid that is present in at least two of the sequences is highlighted in dark shading, and the amino acid(s) that is (are) similar to the residue in dark shading is (are) highlighted in gray shading. The black dots show the Skp1 or F-box binding residues and the open circles represent the Rbx1 binding residues in human CUL1 (Zheng et al., 2002).