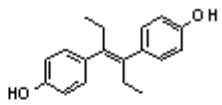
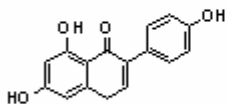


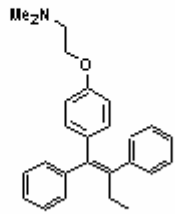
17 β -estradiol (E2)-
agonist



Diethylstilbestrol (DES)
agonist

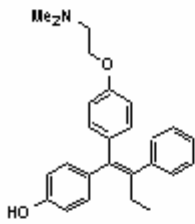


Genistein (Gen)
partial agonist

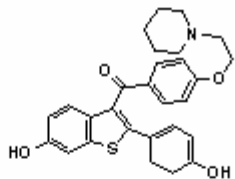


Tamoxifen (Tam)
antagonist

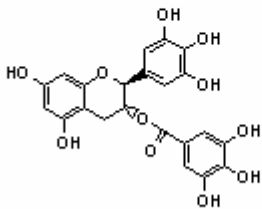
Tamoxifen



4-Hydroxytamoxifen
(4-OHT)-antagonist



Raloxifene (Ral)
antagonist



Epigallocatechin (Epi)
Non-estrogen ligand