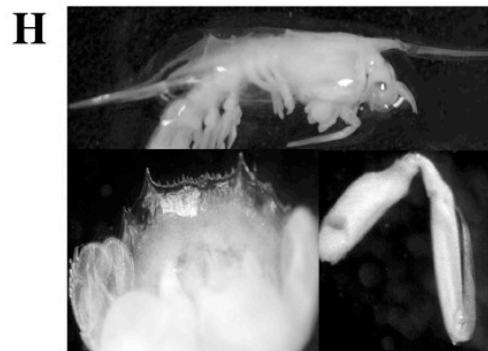
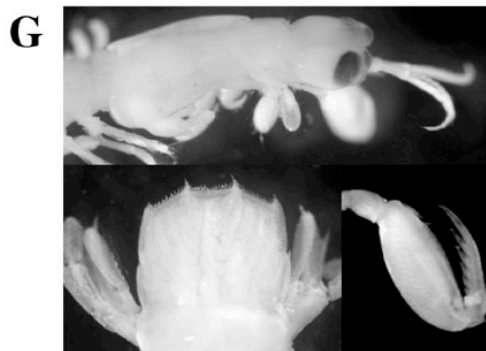
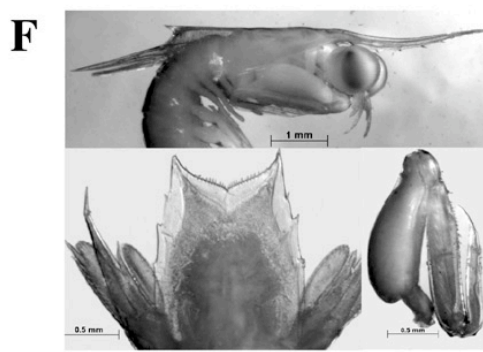
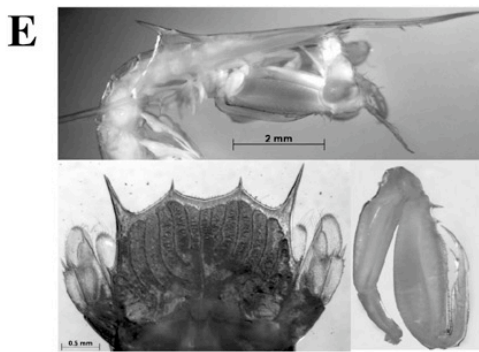
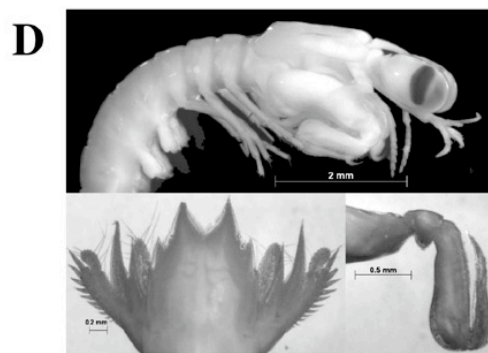
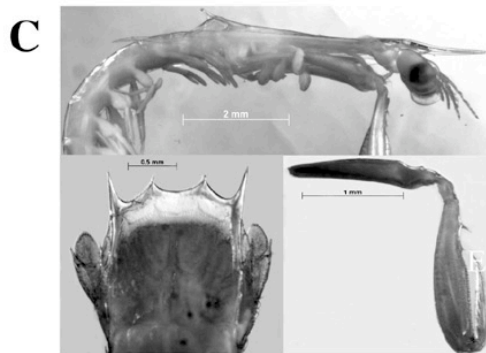
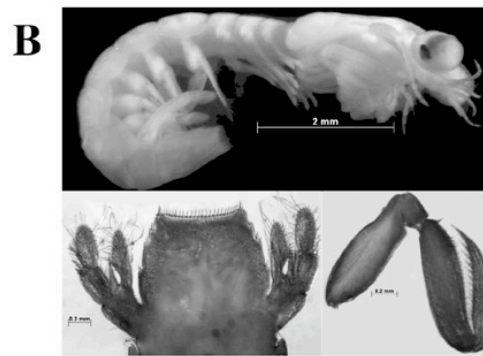
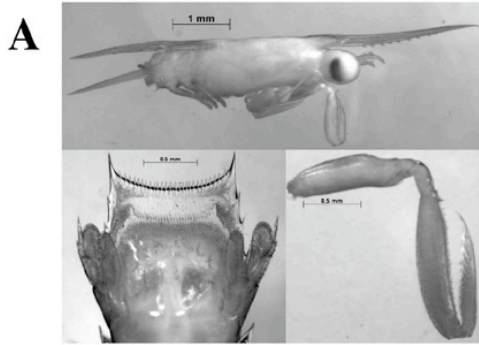
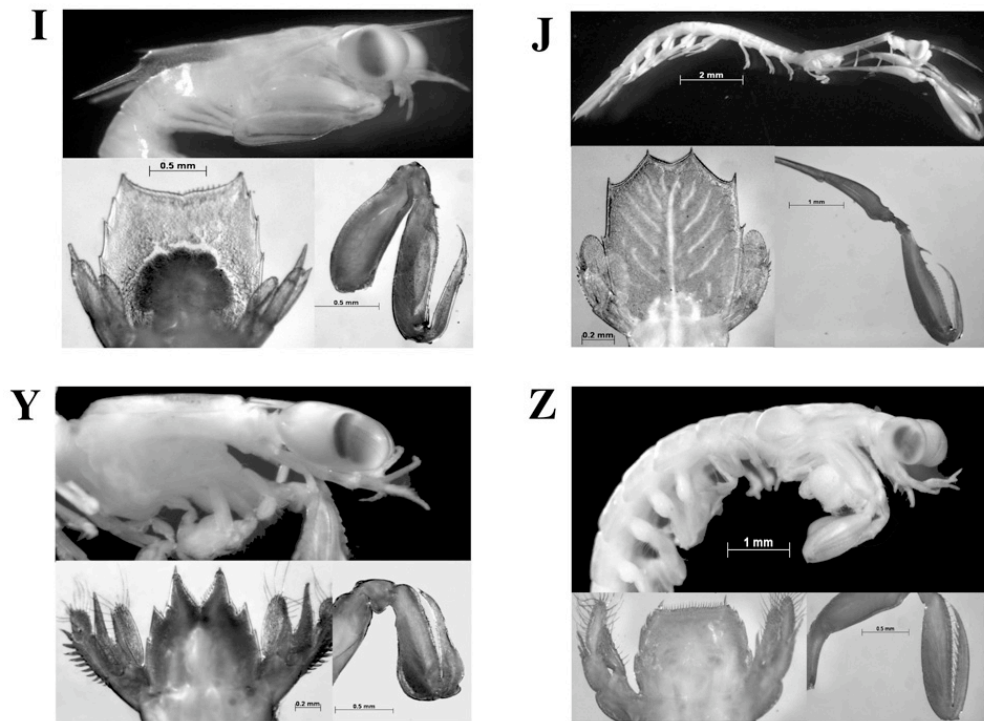


Electronic Appendix: Stomatopod Larval Morphotypes





Electronic Appendix. Representative samples of the 12 larval morphotypes identified in this study through gross examination of telson and uropod structure (e.g., general shape, degree of armature, and presences of pits, tubercles, and spinules), raptorial claw morphology (e.g., shape and spination of dactylus and propodus), and carapace characteristics (presence/absence, shape, and spination of lateral, dorsal, and rostral spines).