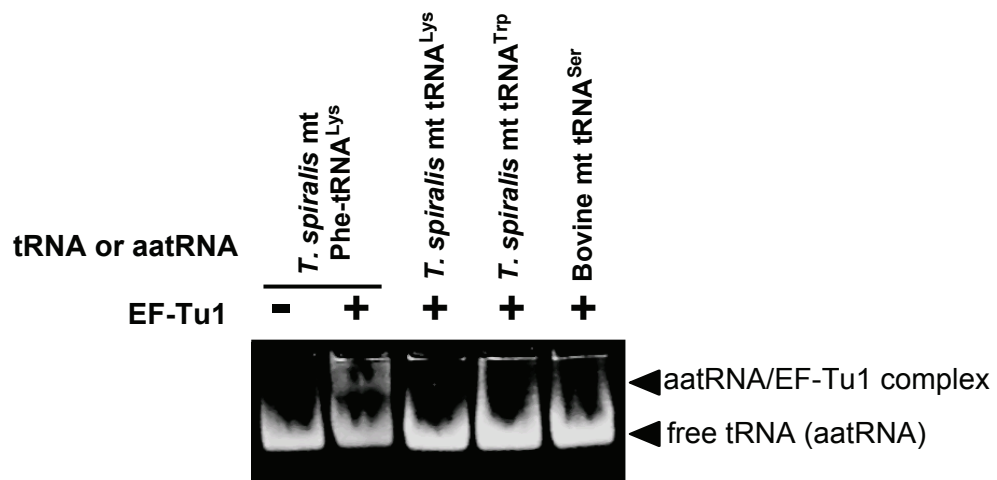


Supplementary Figure 1. Binding of EF-Tu1 and EF-Tu2 to cloverleaf tRNAs. (A, B) Secondary structures of *E. coli* tRNA^{Gly} (A) and tRNA^{Ser} (B). (C, D) deacylation-protection assay using *E. coli* Gly-tRNA^{Gly} (C) and *E. coli* Ser-tRNA^{Ser} (D). These assays were performed in the presence of *T. britovi* EF-Tu1 (filled triangles), *T. britovi* EF-Tu2 (open squares), *E. coli* EF-Tu (filled squares), and in the absence of EF-Tu (open circles).



Supplementary Figure 2. Binding of EF-Tu1 to three types of tRNAs. *T. spiralis* mt tRNA^{Lys}, *T. spiralis* mt tRNA^{Trp}, and bovine mt tRNA^{Ser} in the presence of EF-Tu1 were analyzed by gel mobility shift assay under the conditions described in the Materials and Methods. *T. spiralis* mt Phe-tRNA^{Lys} in the presence or absence of EF-Tu1 was also analyzed. The gel was stained with ethidium bromide.