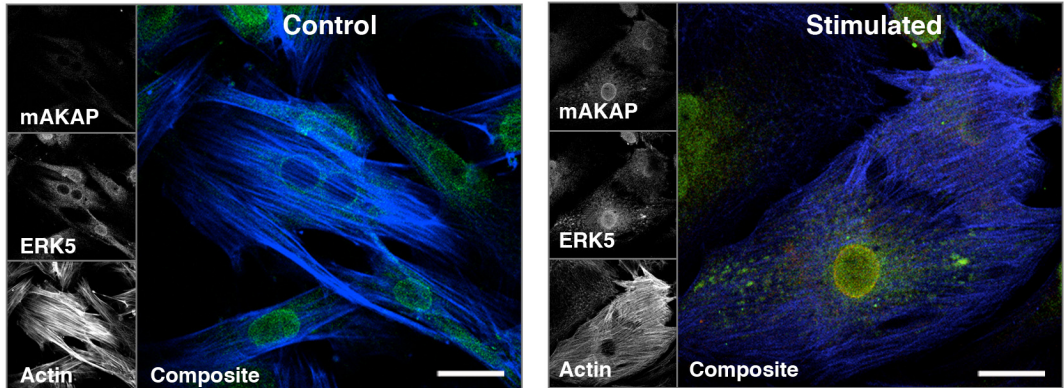


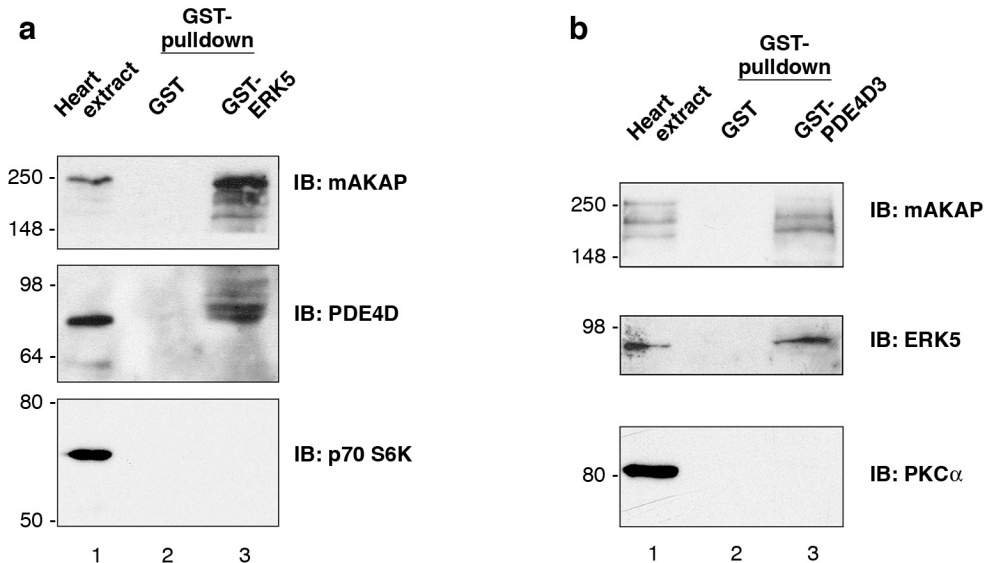
Supplementary Figure 1

Rat Neonatal Ventriculocytes



Supplementary Figure 1. mAKAP and ERK5 co-localize at the nuclear membrane of hypertrophic RNV. Control (left panels) and phenylephrine treated (right panels) RNV were immunostained with antibodies to detect mAKAP (top insets) and ERK5 (middle insets) and with phalloidin to detect actin (bottom insets). Composite images show mAKAP (red), ERK5 (green) and actin (blue), scale bar = 20 μm . Co-distribution of mAKAP and ERK5 appear as yellow.

Supplementary Figure 2



Supplementary Figure 2. mAKAP scaffolds PDE4D3 and ERK5 to form a ternary complex. **(a)** GST-ERK5 or GST-control pulldowns from rat heart extract contained mAKAP (top) and PDE4D3 (middle), but not p70S6K (bottom), $n=3$, representative immunoblots. **(b)** GST-PDE4D3 or GST-control pulldowns from rat heart extract contained mAKAP (top) and ERK5 (middle), but not PKC α (bottom), $n=3$, representative immunoblots.