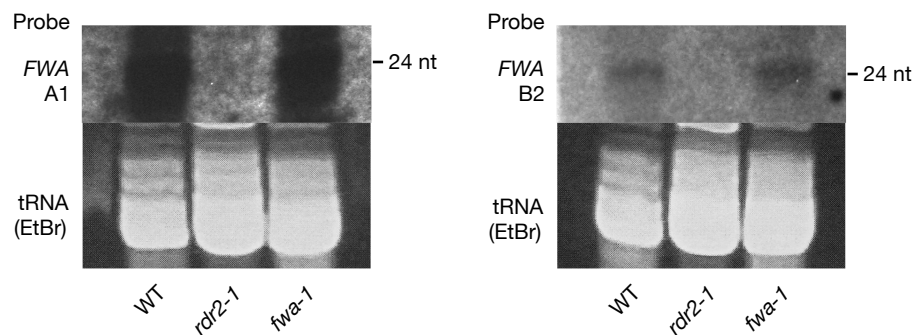


Supplementary Figure S2



siRNAs from the indicated genotypes were probed with LNA probes corresponding to the *FWA* tandem repeats.

The *FWA* tandem repeats are base pairs -1063 to -570. The probe used in Figures 4 and 5 is antisense -889 to -936 (within first large repeat).

Probe A1 is antisense -1026 to -1063 (within small repeat).
Probe B2 is antisense -602 to -643 (within second large repeat).