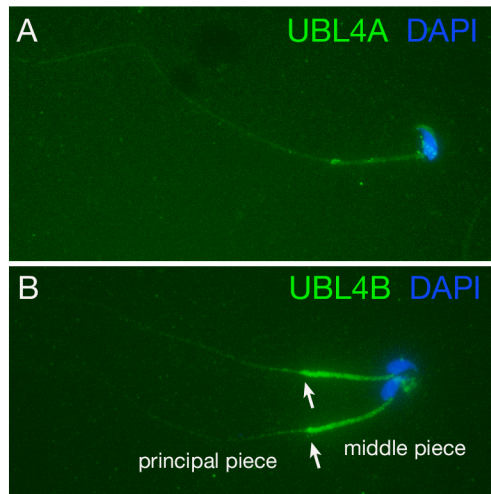


Online supplementary data

Supplementary Figure S1 Localization of UBL4A and UBL4B in epididymal sperm. Sperm from epididymis were fixed in 4% PFA and were immunostained with affinity-purified anti-UBL4A (green) or anti-UBL4B antibodies (green) and DAPI (blue). (A) Anti-UBL4A antibodies weakly stained both sperm tail and periphery of sperm head. (B) Anti-UBL4B antibodies produced a strong staining of the middle piece and a relatively weak staining of the principal piece. Two sperm were shown in (B). The arrows demarcate the possible junction between the middle piece and principal piece.



Supplementary Fig. S1