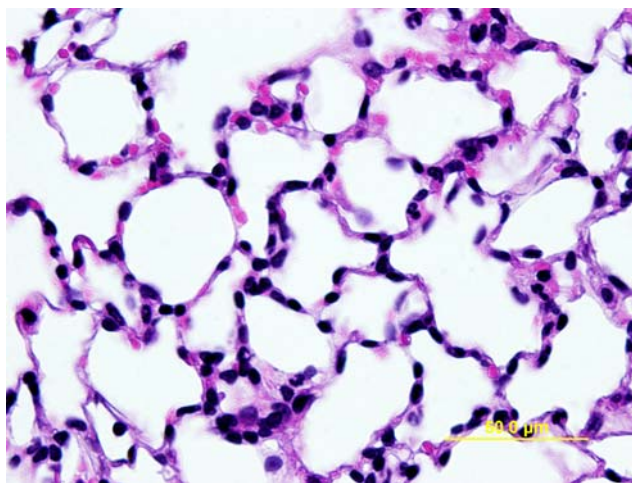


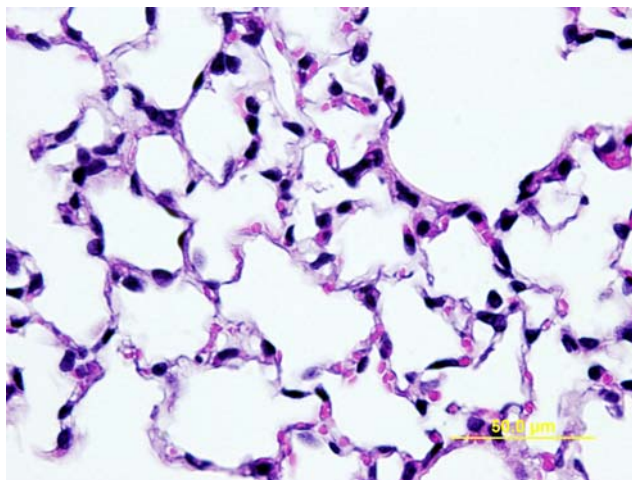
Supplementary

Figure 1

A



B



Supplementary Figure 1

P-selectin or TP blockade prevent acid-induced ALI. (A-B)

Photomicrographs were taken of lung tissue following H&E staining. The therapeutic administration of P-selectin antibody (A) or pre-treatment with a specific TP antagonist (B) protected from the development of ALI. In contrast to the lung in Figure 1E, the lungs in (A) and (B) showed a reduced influx of protein rich fluid and cells into the alveolar space, swelling of the interstitium, and cell accumulation in the interstitial space.

Supplementary

Table 1

Systemic leukocyte and platelet counts

	Busulfan- treatment	Glycol (vehicle)
Leukocytes ($10^3/\mu\text{l}$)	9.3 ± 2.5	11.1 ± 3.1
Polymorphonuclear cells ($10^3/\mu\text{l}$)	2.0 ± 0.7	2.4 ± 0.6
Mononuclear cells ($10^3/\mu\text{l}$)	7.3 ± 2.3	8.7 ± 2.8
Platelets ($10^5/\mu\text{l}$)	$3.7 \pm 2.0^*$	6.1 ± 1.7

n = 16-18 per group

* P < 0.05